



## **EXECUTIVE SUMMARY OF EIA REPORT**

**FOR**

**KOTGAL BARRAGE PROJECT ACROSS WAINGANGA RIVER  
TALUKA & DISTRICT GADCHIROLI, MAHARASHTRA**

**BY**

**VIDARBHA IRRIGATION DEVELOPMENT CORPORATION, NAGPUR (VIDC)**



## EXECUTIVE SUMMARY

### A. BRIEF DESCRIPTION PROJECT

Sr. No.	PARTICULARS	DETAILS		
<b>A PREAMBLE</b>				
1.	<b>Project Name</b>	Kotgal Barrage Project For Irrigation purpose across the River Wainganga in Tahsil& District Gadchiroli		
2.	<b>Project Proponent</b>	Vidarbha Irrigation Development Corporation (VIDC)		
3.	<b>Screening Category</b>	Item 1 (c) "River Valley Projects" in EIA Notification, 14 <sup>th</sup> September, 2006 and amendments thereafter.		
4.	<b>Location</b>			
	Village/Area	Kotgal		
	Taluka	Gadchiroli		
	District	Gadchiroli		
	State	Maharashtra		
	Topo sheet Number	64D/3, 64 D/4, 55P/15 and 55P/16 of Survey of India		
	<b>Geographical Coordinate</b>	<b>Particular</b>	<b>Latitude</b>	<b>Longitude</b>
		Barrage	20°12'12" N	79° 57' 33" E
	<b>Elevation</b>	201 m MSL		
<b>B SALIENT FEATURES OF THE PROJECT</b>				
5.	<b>River</b>	Wainganga		
6.	<b>Sub Basin</b>	Pranhita Sub-Basin		
7.	<b>River Basin</b>	Godavari Basin		
8.	<b>Type of project</b>	Irrigation Project for providing assured water availability for 3 Lift Irrigation Schemes.		
9.	<b>Culturable Command Area (CCA)</b>			
	<b>Scheme</b>	<b>C.C.A.</b>	<b>I.C.A.</b>	
	Kotgal L.I.S.	3294	3000	
	PorlaWasa L.I.S.	3078	2500	
	Gogaon L.I.S.	408	370	
	Virgin Command	1000	750	
	<b>Total</b>	<b>7780</b>	<b>6620</b>	
13	<b>Use of Water</b>			
13.1	<b>Irrigation Use</b>			
	<b>Kotgal LIS</b>	19.869 mm <sup>3</sup>		
	<b>Porlawasa LIS</b>	20.614 mm <sup>3</sup>		
	<b>Gogaon LIS</b>	3.99 mm <sup>3</sup>		
	<b>Virgin Command</b>	6.18 mm <sup>3</sup>		



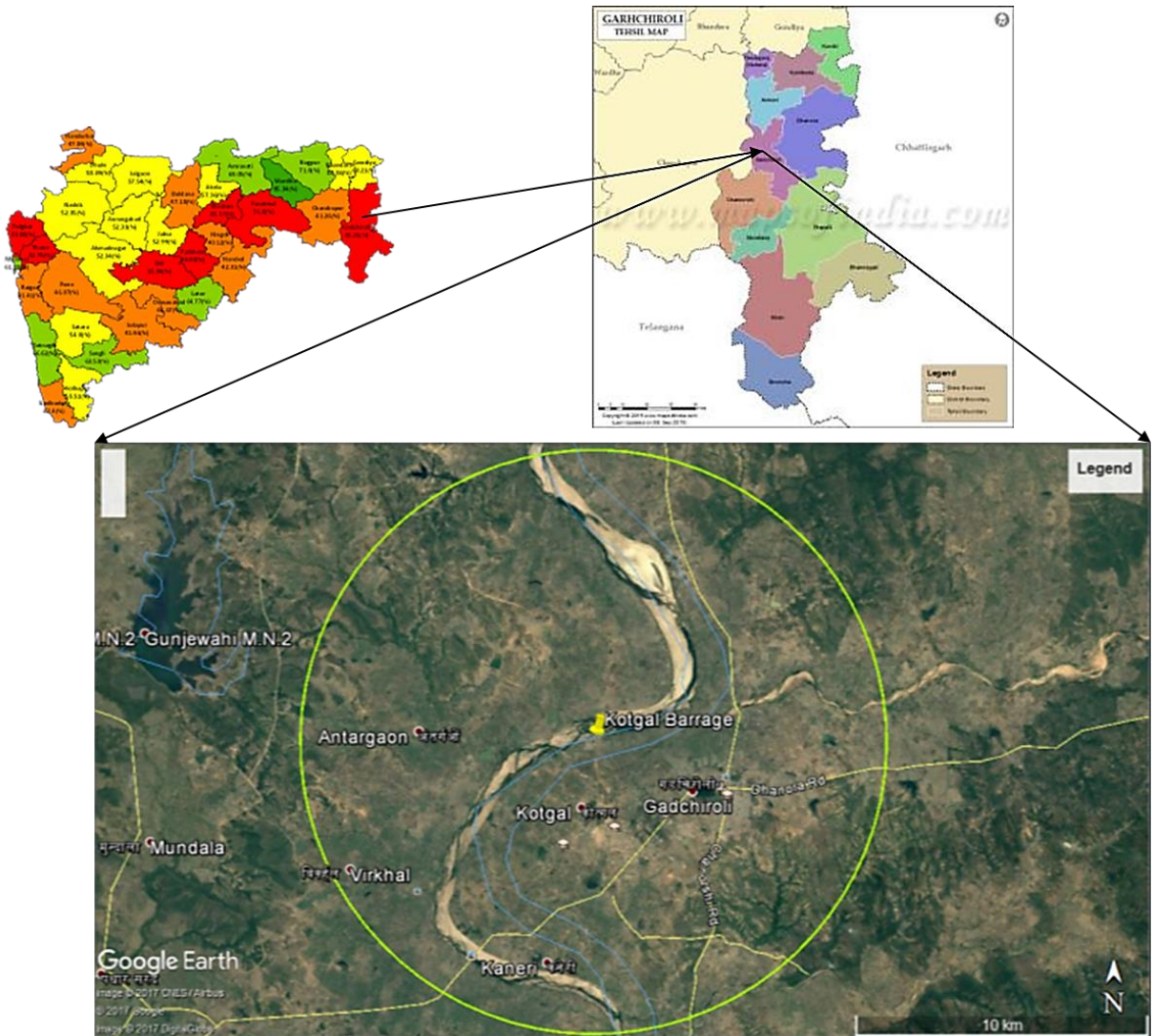
**KOTGAL BARRAGE PROJECT ACROSS WAINGANGA RIVER  
TALUKA & DISTRICT GADCHIROLI, MAHARASHTRA BY  
VIDARBHA IRRIGATION DEVELOPMENT CORPORATION, NAGPUR (VIDC)**

**EXECUTIVE SUMMARY OF EIA/EMP REPORT**

<b>13.2</b>	<b>Domestic use</b>	10.0 mm <sup>3</sup>
<b>13.3</b>	<b>Industrial Use</b>	22.0 mm <sup>3</sup>
<b>13.4</b>	<b>Evaporation losses</b>	20.791 mm <sup>3</sup>
<b>13.5</b>	<b>Total Utilization</b>	103.444 mm <sup>3</sup>
<b>14</b>	<b>Lift Irrigation Schemes supported with their ICA</b>	
<b>14.1</b>	<b>Kotgal LIS</b>	3000 ha
<b>14.2</b>	<b>Porlawasa LIS</b>	2500 ha
<b>14.3</b>	<b>Gogaon LIS</b>	370 ha
<b>14.4</b>	<b>Virgin Command</b>	750 ha
<b>14.5</b>	<b>Total</b>	6620 ha
<b>15</b>	<b>Cost of Project (SOR 2009-10)</b>	365.71 Crore
<b>C</b>	<b>ENVIRONMENTAL SETTINGS OF THE AREA</b>	
<b>16</b>	Nearest Road	Mull Road at 4.37 km towards South East State Highway 9: Chandrapur-Nagpur Highway at 29.18 km towards West
	Nearest Railway Station	Rajuli Railway Station at 28.63 km towards West
	Nearest Air Port	Nagpur airport at 137 km towards NW
	Nearest Town/ Village	Kotgal Village at 2.0 km towards SSW
	Nearest Water Bodies	Project site itself located on Wainganga River Gadchiroli Lake at 4 km towards SE
	Eco Sensitive Zone (National Park, Wildlife Sanctuary, Biosphere Reserve, Wild Life Corridors etc.)	Not within 10 km radius study area
	Historical & Archeological Important Place, Defense Establishment	Not within 10 km radius study area



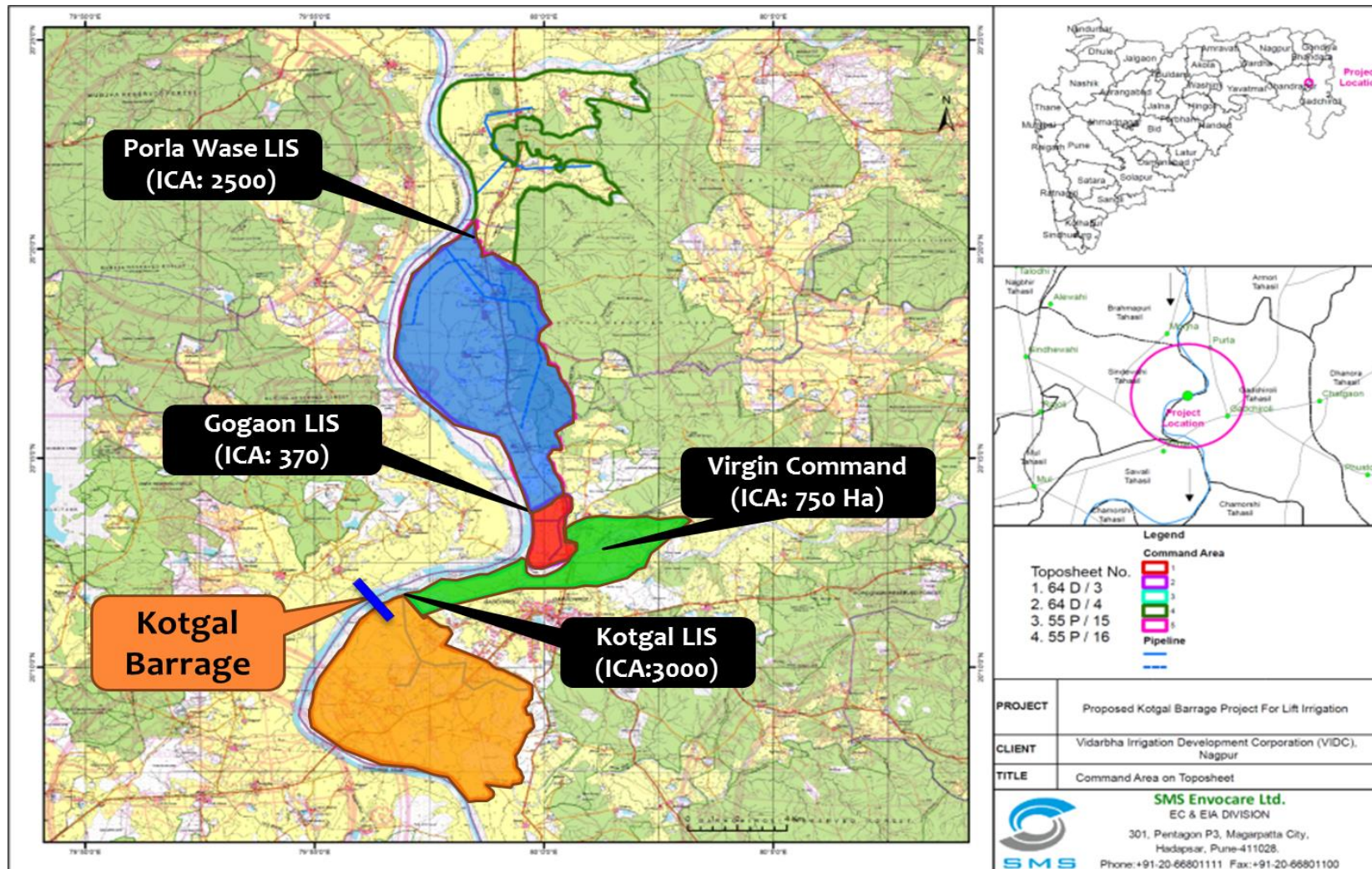
**KOTGAL BARRAGE PROJECT ACROSS WAINGANGA RIVER  
TALUKA & DISTRICT GADCHIROLI, MAHARASHTRA BY  
VIDARBHA IRRIGATION DEVELOPMENT CORPORATION, NAGPUR (VIDC)  
EXECUTIVE SUMMARY OF EIA/EMP REPORT**



**Figure No. 1: Project Location map**



**KOTGAL BARRAGE PROJECT ACROSS WAINGANGA RIVER  
TALUKA & DISTRICT GADCHIROLI, MAHARASHTRA BY  
VIDARBHA IRRIGATION DEVELOPMENT CORPORATION, NAGPUR (VIDC)  
EXECUTIVE SUMMARY OF EIA/EMP REPORT**



**Figure No. 2: Description of the Scheme**



## 11.2 BASELINE STATUS OF ENVIRONMENT

Parameter	Location	Results	Standards		
Ambient Air Quality	8 Location	PM2.5 : 8.6-13.8 µg/m <sup>3</sup> PM10: 33.3- 72.3 µg/m <sup>3</sup> SO <sub>x</sub> : 9.8-13.8 µg/m <sup>3</sup> NO <sub>x</sub> : 8.4- 17.2 µg/m <sup>3</sup>	PM2.5 : 60 µg/m <sup>3</sup> PM10 : 100 µg/m <sup>3</sup> SO <sub>x</sub> : 80 µg/m <sup>3</sup> NO <sub>x</sub> : 80 µg/m <sup>3</sup>		
Noise Level	8 Location	Day: 41.93- 54.69 dB(A) Night: 28.29-37.63 dB(A)	Industrial	Day: 75 dB(A)	Night: 70 dB(A)
			Residential	Day: 55 dB(A)	Night: 45 dB(A)
Water Quality	Ground Water: 8 Location	pH : 7.41 to 8.52 TDS : 192 to 1467 mg/l TH : 80 to 580 mg/l	6.5 to 8.5 2000 mg/l		
	Surface Water: 2 Location	pH : 8.43 to 8.47 TDS : 215 to 220 mg/l	6.5 to 8.5 2000 mg/l		
Soil Quality	8 Location	The analysis results show that the soil is alkaline in nature with almost grayish is colour. Texture of soil is Loamy and clay Loamy. Overall quality of soil is nearly good for agriculture and horticulture purpose.	-	-	-

## 11.3 ENVIRONMENTAL MANAGEMENT PLAN

Environmental Management Plan for proposed project contains:

### **Catchment Area Treatment Plan**

Catchment Area Treatment Plan is not applicable for this project because in this project water will be stored within the banks of Wainganga river and this stored water will be lifted from river by lift irrigation Schemes and farmers.

### **Biodiversity & Wildlife Conservation Plan**

Total 56.86 ha of area of Gadchiroli, Wasda and Chandarpur forest division has been marked out for diversion. Forest application for the same has been already submitted to Forest Appraisal Committee, MoEFCC. Meanwhile as mandatory part of application for clearance, VIDC has identified total 9 villages of Wardha District for compensatory afforestation. Apart from this total Rs 2,950,000/- has been estimated for Biodiversity Management & Conservation Plan.



### **Biodiversity & Wildlife Conservation Plan**

Vidarbha Irrigation development Corporation has proposed total 376.96 ha of area in village Dhanoli, Kotamba, Khadki, Takali (Kite), Kopara, Dorli, Hiwara, Dahegaon (Gosavi) and Charmandal in Wardha district for compensatory afforestation. Cost of the same will be as per the Forest Clearance letter.

### **Solid Waste & Sanitation Management Plan**

Various construction and associated activities in which number of permanent and temporary work force will required to be accommodated; so that good hygienic condition, sanitation facilities and providing safe drinking water are most important factor and should be provided as and when required. For the same purpose, Public Health & Sanitation Management Plan has been prepared containing Solid Waste Management, Sanitation Management and Supply of drinking & other water. Approximately 2120000 Rs. has been estimated for same purpose.

### **Fisheries Management Plan**

Approx. 25.0 lakhs rupees has been estimated for development/implementation of Fisheries management plan including preparation of Hatchery/ fish ponds, procurement of seeds etc. Recurring cost of the same may be additional including training, maintenance, payment of workers, chemical requirement, travel and miscellaneous cost etc.

### **Health Management Plan**

A sum of Rs. 22.0 lakhs are estimated for health management plan as capital cost and Rs. 21.74 lakhs is estimated as recurring cost of the same. VIDC are suggested to incorporate this segment in the tender document so the selected contractor has to fulfill the requirement of the same.

### **Cost of Environmental Management Plan**

The estimated capital and recurring cost of Environmental Management Plan will be around Rs. 127.2 Lakhs. Details of budgetary allocation for EMP are given below:

<b>Sr. No.</b>	<b>Proposed Management Plan</b>	<b>Cost (In Lakhs)</b>
1	Biodiversity & Wildlife Management Plan	20.0
2	Green Belt Development Plan	7.25
3	Solid Waste & Sanitation Management Plan	21.20
4	Fisheries Management Plan	25.00



**KOTGAL BARRAGE PROJECT ACROSS WAINGANGA RIVER  
TALUKA & DISTRICT GADCHIROLI, MAHARASHTRA BY  
VIDARBHA IRRIGATION DEVELOPMENT CORPORATION, NAGPUR (VIDC)  
EXECUTIVE SUMMARY OF EIA/EMP REPORT**

5	Health Management Plan	43.75
6	Air Pollution Management	5.00
7	Environmental Monitoring Plan	5.00
<b>Total</b>		<b>127.2</b>

