



**AJANSARA BARRAGE PROJECT FOR LIFT IRRIGATION OF 30004 HA CCA  
AT VILLAGE AJANSARA, TALUKA HINGANGHAT, DISTRICT WARDHA, MAHARASHTRA BY  
VIDARBHA IRRIGATION DEVELOPMENT CORPORATION (VIDC)  
EXECUTIVE SUMMARY OF DRAFT EIA/EMP REPORT**

## **EXECUTIVE SUMMARY of EIA REpORT**

**For**

**AJANSARA BARRAGE PROJECT FOR LIFT IRRIGATION OF  
30004 HA CCA  
AT VILLAGE AJANSARA, TALUKA HINGANGHAT, DISTRICT  
WARDHA, MAHARASHTRA BY  
VIDARBHA IRRIGATION DEVELOPMENT CORPORATION  
(VIDC)**



**AJANSARA BARRAGE PROJECT FOR LIFT IRRIGATION OF 30004 HA CCA  
AT VILLAGE AJANSARA, TALUKA HINGANGHAT, DISTRICT WARDHA, MAHARASHTRA BY  
VIDARBHA IRRIGATION DEVELOPMENT CORPORATION (VIDC)  
EXECUTIVE SUMMARY OF DRAFT EIA/EMP REPORT**

## ExEcutive Summary

### A. BRIEF DESCRIPTION PROJECT

Sr. No.	PARTICULARS	DETAILS		
<b>A</b>	<b>PREAMBLE</b>			
1.	<b>Project Name</b>	Ajansara Barrage Project for Lift Irrigation		
2.	<b>Project Proponent</b>	Vidharbha Irrigation Development Corporation		
3.	<b>Screening Category</b>	Item 1 (C) in EIA Notification, 14 <sup>th</sup> September 2006		
4.	<b>Location</b>			
	Village/Area	Ajansara		
	Taluka	Hinganghat		
	District	Wardha		
	State	Maharashtra		
	Topo sheet Number	55L/10, 55L/11, 55L/14, 55L/15		
	<b>Geographical Coordinate</b>	<b>Particular</b>	<b>Latitude</b>	<b>Longitude</b>
		Head	20° 24' 15" N	78° 39' 30" E
<b>B</b>	<b>SALIENT FEATURES OF THE PROJECT</b>			
1.	<b>River</b>	Wardha		
2.	<b>River Basin</b>	Godavari		
3.	<b>Type of project</b>	Lift Irrigation		
3.	<b>Gross Command Area (GCA)</b>	35940 Ha		
4.	<b>Culturable Command Area (CCA)</b>	<b>30004 Ha</b>		
5.	<b>Irrigable Command Area (ICA)</b>	24000 Ha		
6.	<b>Area Under Irrigation</b>	Kharif: 12000 Ha (50%) Rabi: 9600 Ha (40%) Two Seasonal: 6480 Ha (27%) GCA: 28080 Ha (117%) Intensity of Irrigation: 93.59%		
10.	<b>Proposed Utilization</b>			
	<b>Kharif</b>	29.732 Mm <sup>3</sup>		
	<b>Rabi</b>	72.185 Mm <sup>3</sup>		
	<b>Two seasonal</b>	51.939 Mm <sup>3</sup>		
	<b>Total</b>	153.856 Mm <sup>3</sup>		
	<b>Capacity</b>			
	<b>FRL</b>	22.24 Mm <sup>3</sup>		



**AJANSARA BARRAGE PROJECT FOR LIFT IRRIGATION OF 30004 HA CCA  
AT VILLAGE AJANSARA, TALUKA HINGANGHAT, DISTRICT WARDHA, MAHARASHTRA BY  
VIDARBHA IRRIGATION DEVELOPMENT CORPORATION (VIDC)  
EXECUTIVE SUMMARY OF DRAFT EIA/EMP REPORT**

Sr. No.	PARTICULARS	DETAILS
	<b>MDDL</b>	0.12 Mm <sup>3</sup>
	<b>Dead Storage Level</b>	0.12 Mm <sup>3</sup>
	<b>Flood absorption capacity below FRL</b>	22.24 Mm <sup>3</sup>
	<b>Head Work</b>	
	<b>Dam</b>	<ol style="list-style-type: none"> <li>1. Type: Earthen Dam</li> <li>2. Length: 3765 M</li> <li>3. Top Width: 6.50 M</li> <li>4. Max. Height: 9.21 M</li> <li>5. Type of cutoff: Partial</li> <li>6. Maximum Height: 3.74 M</li> <li>7. Upstream Blanket: Grouting proposed</li> </ol>
	<b>Barrage</b>	<ol style="list-style-type: none"> <li>a. Location: R.D. 3240 to 3507 M</li> <li>b. Length: 267 M</li> <li>c. Spillway Gate: 15 Nos</li> <li>d. Maximum Water Level: 221.900 M</li> <li>e. Maximum height of Spillway (crest) above deepest foundation: 14.36 M</li> <li>f. Crest Level: 208.000 M</li> <li>g. Size of Gate: 15X9.50 M</li> <li>h. Type of Gate: Vertical Gate</li> <li>i. Type of energy dissipation: Stilling Basin 40 M length</li> <li>j. Maximum Discharge Capacity: 15168.500 Cumecs</li> </ol>
	<b>Submergence</b>	
	<b>Land &amp; Property Submerged</b>	<ol style="list-style-type: none"> <li>a. <b>Land affected @ RL 218.000 M</b> <ol style="list-style-type: none"> <li>i. Gross: 1044.13 Ha</li> <li>ii. Culturable: 517.47 Ha</li> <li>iii. Irrigated: 21.14 Ha</li> </ol> </li> <li>b. <b>Village affected no. @ 220.800 M</b> <ol style="list-style-type: none"> <li>i. Fully: 1 (Dapori)</li> <li>ii. Partially: 4 (Jagjai, Mansaoli, Kosurla, Sonagaon (Raut))</li> </ol> </li> <li>c. <b>Building/Houses affected:</b></li> </ol>



**AJANSARA BARRAGE PROJECT FOR LIFT IRRIGATION OF 30004 HA CCA  
AT VILLAGE AJANSARA, TALUKA HINGANGHAT, DISTRICT WARDHA, MAHARASHTRA BY  
VIDARBHA IRRIGATION DEVELOPMENT CORPORATION (VIDC)  
EXECUTIVE SUMMARY OF DRAFT EIA/EMP REPORT**

Sr. No.	PARTICULARS	DETAILS
		i. Private: 107 Nos. ii. Temple: 4. Nos. iii. Well: 23 Nos. iv. Other: 3 Small K.T. weirs, 2 Bridges (minor), Water supply wells to supply water to Ajansara, Lift Scheme Ajansara.
	<b>No. of Families affected</b>	100 Nos.
	<b>No. of Persons affected</b>	525 souls
	<b>Canals</b>	
	<b>Kachangaon Canal (LBC)</b>	a. Purpose of Canal: Irrigation b. Type Flow/Lift: Flow c. Unlined: 95% d. Lined (CC Lining): 5%
	<b>Weni Canal</b>	a. Purpose of Canal: Irrigation b. Type Flow/Lift: Flow c. Unlined: 95% d. Lined (CC Lining): 5%
	<b>Lift</b>	
	<b>Location</b>	Jack well Left Bank U/s. of 50 m @ RD 3240 M
	<b>Length of Rising Main</b>	7200 M
	<b>Diameter of Rising Main</b>	1950 mm Dia.
	<b>Size of Delivery Chamber</b>	15 X 15 X 3.50 M
	<b>Discharge of Rising Main</b>	13.00 Cumecs
	<b>Horse Power Needed</b>	8080 HP
	<b>Pumps Provided</b>	8 Nos. of 1010 HP
<b>C</b>	<b>ENVIRONMENTAL SETTINGS OF THE AREA</b>	
	Highway	NH-7 at 7.50 Km towards E & ESE
	Nearest Railway Station	Wardha RS at 9.5 Km in ENE
	Nearest Air Port	Dr. Babasaheb Ambedkar IA, Nagpur at 86 Km in NE
	Nearest Town	Wardha Town at 9.5 Km in ENE
	Nearest Water Bodies	Wardha River (Project site)
	Eco Sensitive Zone (National Park, Wildlife Sanctuary, Biosphere	No Eco Sensitive Zone viz. National Park, Wild Life Sanctuary, Biosphere reserve, Wildlife Corridors falling within 10 km radius from the project site.



**AJANSARA BARRAGE PROJECT FOR LIFT IRRIGATION OF 30004 HA CCA  
AT VILLAGE AJANSARA, TALUKA HINGANGHAT, DISTRICT WARDHA, MAHARASHTRA BY  
VIDARBHA IRRIGATION DEVELOPMENT CORPORATION (VIDC)  
EXECUTIVE SUMMARY OF DRAFT EIA/EMP REPORT**

Sr. No.	PARTICULARS	DETAILS
	Reserve, Wild Life Corridors etc.)	
	Historical & Archeological Important Place, Defense Establishment	No Historical & Archeological site and defense establishment is falling within impact zone of the project. Nearest defense Installment (Central Ammunition Depot) at Pulgaon is located at 41.0 Km in NW direction
5.	<b>Project Cost</b>	
	Head Works	Rs. 12984.367 Lakhs
	Canal	Rs. 3870.708 Lakhs
	Direct Charges	Rs. 3758.966 Lakhs
	Indirect Charges	Rs. 228.270 Lakhs
	<b>Total Cost of Project</b>	<b>Rs. 20842.270 Lakhs</b>

## B. BACKGROUND OF PROPOSED

Vidarbha Irrigation Development Corporation (VIDC), Nagpur under Water Resource Department, Government of Maharashtra has proposed the Ajansara Barrage Project for Lift Irrigation to irrigate an area of 30004 Ha of Culturable Command Area (CCA) by utilizing the water from the Wardha River in Village Ajansara, Hinganghat Taluka of Wardha District of Maharashtra State. Administrative approval to the project is accorded by Government of Maharashtra Vide Marathi Letter Shasan Nirnaya No. Ajansara-2005/964/ (207/05) J.S.A. Mantralaya, Mumbai dated 27<sup>th</sup> November, 2006. ToR letter for EIA study was given by Expert Appraisal Committee, MoEFCC as per Letter no. J-12011/17/2017-IA-I (R) dated 4<sup>th</sup> August, 2017. Following are the villages will be getting benefited by the project.

Sr. No.	Village	Sr. No.	Village	Sr. No.	Village	Sr. No.	Village
1	Ajansara	13	Ajangaon	25	Bambarda	37	Jangona
2	Sonegaon	14	Gaud	26	Khapri	38	Veni
3	Sawangi	15	Arvi	27	Donduda	39	Sasti
4	Takli	16	Ghastasli	28	Bhiwapur	40	Selu
5	Nidha	17	Kulki	29	Gangapur	41	Dhonora
6	Sirasgaon	18	Dandora	30	Pipari	42	Khekdi
7	Sonegaon (Raut)	19	Kanchangaon	31	Bopapur	43	Sekapur
8	Pawani	20	Wadner	32	Hiwra	44	Dhochi

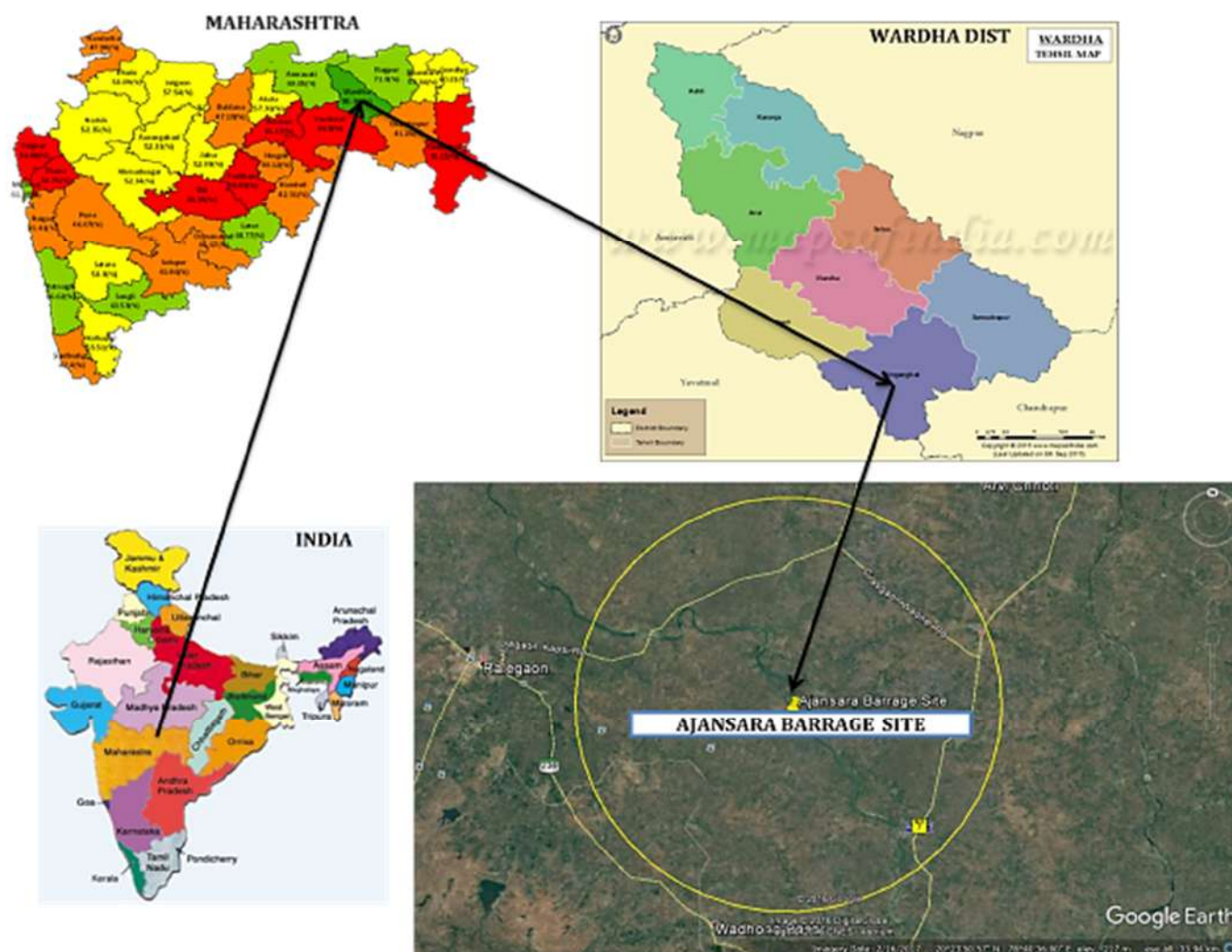


**AJANSARA BARRAGE PROJECT FOR LIFT IRRIGATION OF 30004 HA CCA  
AT VILLAGE AJANSARA, TALUKA HINGANGHAT, DISTRICT WARDHA, MAHARASHTRA BY  
VIDARBHA IRRIGATION DEVELOPMENT CORPORATION (VIDC)  
EXECUTIVE SUMMARY OF DRAFT EIA/EMP REPORT**

9	Alliour	21	Yerandgaon	33	Pohna	45	Kolhi
10	Yaranwadi	22	Mankapur	34	Kuran	46	Dhiwari-Pipri
11	Pimpalgaon	23	Fukta	35	Yefa	47	Sawangi
12	Sirud	24	Tembla	36	Dorla	48	Bhagawa



**AJANSARA BARRAGE PROJECT FOR LIFT IRRIGATION OF 30004 HA CCA  
AT VILLAGE AJANSARA, TALUKA HINGANGHAT, DISTRICT WARDHA, MAHARASHTRA BY  
VIDARBHA IRRIGATION DEVELOPMENT CORPORATION (VIDC)  
EXECUTIVE SUMMARY OF DRAFT EIA/EMP REPORT**

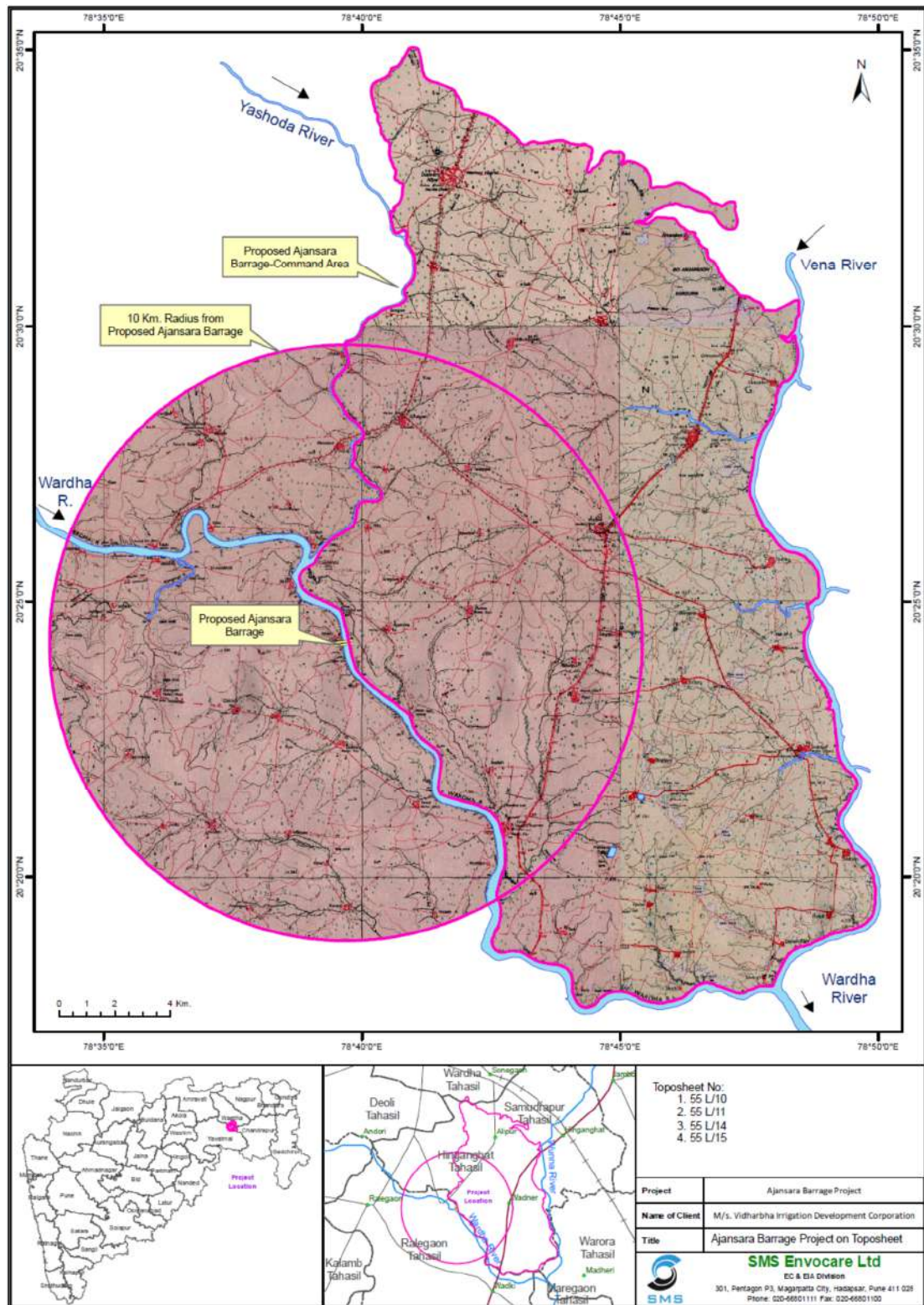


**Figure No. 1: Project Location map**





**AJANSARA BARRAGE PROJECT FOR LIFT IRRIGATION OF 30004 HA CCA  
AT VILLAGE AJANSARA, TALUKA HINGANGHAT, DISTRICT WARDHA, MAHARASHTRA BY  
VIDARBHA IRRIGATION DEVELOPMENT CORPORATION (VIDC)  
EXECUTIVE SUMMARY OF DRAFT EIA/EMP REPORT**



**Figure No. 2: Commoand map on toposheet**





**AJANSARA BARRAGE PROJECT FOR LIFT IRRIGATION OF 30004 HA CCA  
AT VILLAGE AJANSARA, TALUKA HINGANGHAT, DISTRICT WARDHA, MAHARASHTRA BY  
VIDARBHA IRRIGATION DEVELOPMENT CORPORATION (VIDC)  
EXECUTIVE SUMMARY OF DRAFT EIA/EMP REPORT**

## C. BASELINE STATUS OF ENVIRONMENT

STUDY PERIOD: 1 <sup>st</sup> October, 2017 to 30 <sup>th</sup> September, 2019						
Parameter		Location	Results		Standards	
Ambient Quality	Air	8 Location	PM2.5 : 10.4 - 30.7 µg/m3 PM10 : 19.8 - 58.9 µg/m3 SOx : 6.6 - 26.4 µg/m3 NOx : 8.3 - 25.1 µg/m3	PM2.5 : 60 µg/m3 PM10 : 100 µg/m3 SOx : 80 µg/m3 NOx : 80 µg/m3		
Noise Level		8 Location	Day: 42.0- 57.2 dB(A) Night: 20.0-43.8 dB(A)	Industrial	Day: 75 dB(A)	Night: 70 dB(A)
				Residential	Day: 55 dB(A)	Night: 45 dB(A)
Water Quality		Ground Water: 8 Location	pH : 7.15 to 8.22 TDS: 74 to 1246 mg/l TH : 202 to 532 mg/l	6.5 to 8.5 2000 mg/l		
		Surface Water: 2 Location	pH : 7.78 to 8.54 TDS: 186 to 424 mg/l DO : 3 to 6.2 mg/l	6.5 to 8.5 2000 mg/l		
Soil Quality		8 Location	The analysis results show that the soil is alkaline in nature with almost grayish is colour. Texture of soil is Loamy and clay Loamy. Overall quality of soil is nearly good for agriculture and horticulture purpose.			

## D. ANTICIPATED IMPACT

- Generation of Solid Waste from Labor Colony
- Excavated soil generation and loss of fertile soil
- Waste water generation from Labor colony, construction activities
- Loss of land, forest area under submergence
- Air pollution due to construction activities, transportation of raw material and operation of mechanical instrument.
- Hazardous waste generation from construction activities
- Socio-economic impact due to construction activities
- Temporary impact of ecology due to project activities
- The Depori village gaathan is coming under the submergence due to the project. This village is proposed for rehabilitation. However, besides Dapori, some houses of village



jagjai, kosurla, sourla, Sonegaon and Mansaoli of Hinganghat tehsil of Wardha district are likely to be affected by submergence.

## **E. ENVIRONMENTAL MANAGEMENT PLAN**

Environmental Management Plan for proposed project contains:

### **Catchment Area Treatment Plan**

Catchment Area Treatment Plan is proposed in which engineered measures like Gabion structure, Ground water recharge measures, contour bunding as well as biological measures like plantation is involved.

### **Biodiversity & Wildlife Conservation Plan**

There are no conservation/ preservation areas in the form of any wildlife sanctuary, national park, etc. in the vicinity of the proposed Project. The Project, therefore, does not pose any threat to an ecosystem or species of conservational significance. The total land requirement for the proposed project is 1044.13 ha area of which 31.56 ha is Zudpi forest land for which Forest clearance has already been accorded from Regional Office, MoEFCC, Bhopal on 25.04.2008. The submergence is 1044.13 ha of which 463.36 ha is government land and 549.21 ha is private land.

### **Compensatory Afforestation & Greenbelt development plan**

Vidarbha Irrigation Development Corporation and Dy. Conservator, Wardha Division Wardha has proposed total 67.10 ha of area in 4 villages of Wardha district for Compensatory afforestation. Greenbelt will be developed all available location, along the road, dam site and other area available. Local fast growing species will be planted and maintenance will be done.

### **Solid Waste & Sanitation Management Plan**

Various construction and associated activities in which number of permanent and temporary work force will required to be accommodated; so that good hygienic condition, sanitation facilities and providing safe drinking water are most important factor and should be provided as and when required. For the same purpose, Public Health & Sanitation Management Plan has been prepared containing Solid Waste Management, Sanitation Management and Supply of drinking & other water.



**AJANSARA BARRAGE PROJECT FOR LIFT IRRIGATION OF 30004 HA CCA  
AT VILLAGE AJANSARA, TALUKA HINGANGHAT, DISTRICT WARDHA, MAHARASHTRA BY  
VIDARBHA IRRIGATION DEVELOPMENT CORPORATION (VIDC)  
EXECUTIVE SUMMARY OF DRAFT EIA/EMP REPORT**

### **Command Area Development Plan**

Water Users Association will be formed in the entire command area. The objective of farmer's organization shall promote & secure distribution of water among its users, adequate maintenance of the irrigation system, efficient & economical utilization of water to enhance the agriculture production. Training on new irrigation technique like drip irrigation, crop wise water requirement, Training on maintenance of irrigation system, Maintenance of Irrigation system and operation of water distribution, Training of communication system through mock drill etc. will be provided to members formers.

### **Fisheries Management Plan**

Development/implementation of Fisheries management plan including preparation of Hatchery/ fish ponds, procurement of seeds etc. are proposed. Approx. 30.0 lakhs rupees to be allocated for development/implementation of Fisheries management plan including preparation of Hatchery/ fish ponds, procurement of seeds etc. Recurring cost of the same may be additional including training, maintenance, payment of workers, chemical requirement, travel and miscellaneous cost etc.

### **Health Management Plan**

A sum of Rs. 27.0 lakhs are to be secured for health management plan as capital cost and Rs. 24.44 lakhs is to be secured as recurring cost. VIDC are suggested to incorporate this segment in the tender document so the selected contractor has to fulfill the requirement of the same.

### **Cost of Environmental Management Plan**

The estimated capital and recurring cost of Environmental Management Plan will be around Rs. 15264000.00 Rupees (152.64 Lakhs). Details of budgetary allocation for EMP are given below:

Sr. No.	Proposed Management Plan	Cost
1	Biodiversity & Wildlife Management Plan	20,00000.00
2	Green Belt Development Plan	1000000.00
3	Solid Waste & Sanitation Management Plan	2120000.00
4	Fisheries Management Plan	3000000.00
5	Health Management Plan	5144000.00
6	Pollution Management	1500000.00
7	Environmental Monitoring Plan	500000.00
<b>Total</b>		<b>15264000.00</b>

