

Report On

Noise Monitoring During Ganesh Festival 2008



MAHARASHTRA POLLUTION CONTROL BOARD

Kalpataru Point, Sion (E), Mumbai – 400 022.

Tel : 2401 0437 / 2402 0781 Fax : 2402 4068

E-mail : mpcb@mah.nic.in

Web site : <http://mpcb.mah.nic.in>

CONTENTS

Sr. No.	Title	Page No.
1.	Introduction	3
2.	Objective	3
3.	Noise Pollution and its effect on Environment	3
4.	Noise Level Measurement and Noise Pollution Standards	3
5.	Methodology of the survey	4
6.	Noise Levels at Various Locations in the City	6
7.	Detailed Result of all the cities	11
8.	Conclusion	29
9.	Glimpses of the event	30

1. Introduction

Ganesha Chaturthi, the Ganesha festival, also known as 'Vinayak Chaturthi' or 'Vinayaka Chavithi' is celebrated by Hindus around the world as the birthday of [Lord Ganesha](#). It is observed during mid-August to mid-September) and the grandest and most elaborate of them, especially in the western Indian state of Maharashtra, lasts for 10 days, ending on the day of 'Ananta Chaturdashi'. After 10 days, Ganesh idols are immersed in the water bodies. Large number of people participate in the festival and the immersion procession on the last day. Vocal music and musical instruments during the festival causes high levels of noise. In general, ambient levels of noise increase considerably.

In order to assess the situation of noise levels in various cities across the state, Maharashtra Pollution Control Board has carried out the survey for 5 days during Ganesh festival from September 10th to 14th.

2. Objective

The objective of this exercise is to assess the problem faced by the residents when the noise level of their surroundings exceed the permissible limit. Young generation (students) are to be involved who will act as messengers on environmental awareness and explain the passerby, who show interest in noise measurement.

3. Noise Pollution and its effect on Environment

Noise is defined as the undesirable sound. Sound which pleases the listeners is music and that which causes pain and annoyance is noise. At times what is music for some can be noise for others. To some people the roar of an engine is satisfying or thrilling and to others it may be annoying. Noise is transient; once the pollution stops, the environment is free of it. We can measure individual sounds that may damage human hearing, but it is difficult to monitor cumulative exposure to noise. The effect of noise pollution is multifaceted and inter related. The effect of noise pollution can lead to decrease in efficiency, lack of concentration, fatigue, increase in blood pressure, temporary deafness, could lead to abortion etc.

4. Noise Level Measurement and Noise Pollution Standards

A decibel is the standard for the measurement of noise. The zero on a decibel scale is at the threshold of hearing, the lowest sound pressure that can be heard. According to D.B. Smith, 20 dB is whisper, 40 dB is quiet office, 60 dB is normal conversation and 80 dB is the level at which sound becomes physically painful.

Noise is measured in decibels (dBA). 'A' symbol indicates a measurement of a logarithmic scale. In each case, the actual measurement 'a' is compared to a fixed reference level 'r' and the "decibel" value is defined to be $10 \log_{10} (a/r)$. 'A' weighing filters out lower frequencies very severely. Fast responses closely match to the simulations of Human ear sensitivity. Fast response (125 to 200 milliseconds) was selected to measure noise levels. The human response to Noise depends upon the frequency of the sound, the type of noise (continuous, intermittent or impulsive) and the time (day or night) it occurs.

Noise has been recognised as ambient air pollutant. Standards in this regard are laid down under The Environment (Protection) Act, 1986 (and rules made there under) and under the Model Rules of the Factories Act, 1948 for occupational health and safety purposes.

The Central Pollution Control Board constituted a National Committee of Experts on Noise Pollution Control. The Committee recommended noise standards for ambient air and for automobiles, domestic appliances and construction equipment, which were later notified under The Environment (Protection) Act, 1986 as given below:

Area Code	Category of Area	Limits in dB(A) , Leq	
		Day time	Night time
A	Industrial area	75	70
B	Commercial area	65	55
C	Residential Area	55	45
D	Silence Zone	50	40

Note:

1. Day time is reckoned from 6 A.M. To 9 P.M.
2. Night time is reckoned in from 9 P.M. and 6 A.M.
3. Silence zone is referred as areas within 100 meters around premises such as hospitals, educational institutions and courts. The Silence zones are to be declared by the Competent Authority.
4. Use of vehicular horns, loudspeakers and bursting of crackers shall be banned in these zones.
5. Mixed categories of areas should be declared as one of the four above mentioned categories by the Competent Authority and the corresponding standards shall apply.

5. Methodology of the survey

The noise pollution monitoring was carried out from September 10th to 14th 2008. Noise level measurement was done from 1800 hrs upto midnight (2400 hrs). The monitoring was carried out at a distance from Ganesh Pandals, closer to the residential buildings. The main purpose of this exercise was to determine how the environment is disturbed and what effect it has on a normal human being residing in that area or closer to the area.

There were a total of 85 locations covered during Ganesh festival in Maharashtra. The detailed list of location is as follows:-

Sr. No.	City	Detailed Location
1.	Mumbai	Andheri - Azad Nagar, Sarvajanic Utsav Samiti, Vir Desai Marg, Andheri (W)
		Bandra - Sarvajanic Ganeshutsav Mandal-Sr.A2329, S.V. Road, Bandra (W)
		Bhandup - Jay Bajrang Mitra Mandal (Bhandup Samrat), Bhandup Station Rd (W)
		Borivali - Manav Mitra Mandal, L.T. Road(W)
		Byculla - Sarvajanic Ganeshutsav mandal, Dr. Ambedkar Marg, (E)
		Chembur (East) - Near Ashish Talao / Ashish Theatre
		Chembur (West) - Sahyadri Krida Mandal Tilak Nagar.
		Chinchpokali (E) - Lalbaug Raja Sarvajanic Ganeshutsav Mandal
		Chinchpokali (W) - Parsiwadi Mitra Mandal, Auther Road Naka, Sarvajanic Ganeshutsav Mandal
		Dadar (East) - Khodadad Circle, Dadar TT
		Dadar (West) - Sai Ganesh Sadan, Senapati Bapat Marg, Sarvajanic Ganeshutsav Mandal, Sunder Nagar
		Elphinstone - Shiv Sai Sarvajanic Ganeshutsav Mandal, B.M. Marg.
		Ghatkopar - Amar Mitra Mandal, Tilak nagar. (E)
		Girgaon Chowpati - Akhil Chowpati Bhirvi Lane, Sarvajanic Ganeshutsav Mandal, Mumbai - 400 006
		Grant Road - Saltar Road Sarvajanic Ganeshutsav Mandal,

Sr. No.	City	Detailed Location
		Grant Road (W).
		Juhu Chowpati - Om Kareshver Shiv Mandir (Trust), Fort Juhu Choupati
		Kandivali (East) - Thakur Village
		Kandivali (W) - Balla Mitra Mandal, Behind Poisur Depot, Nr Ganesh Medics, Kandivali (W)
		Khar - Sarvajanik Ganeshutsav Mandal Sr. 1441-34/35, Sharma Building, 4th Road, Opp. Khar Police Station(W)
		Mulund - Sargam Mitra Mandal R.H.B. Road.
		Mumbai Central - Belasis Road, B.I.T. Chawl.
		Parel - Sarvajanik Ganeshutsav Mandal Bal Gopal Mandal Parel (W), Tata Mill Compound
		Santacruz (East) - Milan Subway, Neet & Geet Society
		Vikhroli - Balmitra Kala Mandal, Vijay House, Vikhroli Station Rd.(W)
		Wadala - G.B.S. Sarvajanik Ganeshutsav Mandal, Shree Ram Mandir, Before Wadala Depot Signal
2.	Navi Mumbai	Airoli : Traffic Police Chouki (before Mulund Airoli Bridge)
		CBD : MGM Hospital Chowk, Near Police Chowki
		Kopar Khairane : Sector-10, D-Mart Main Road
		Uran - Ganpati Chowk
		Vashi : Shivaji Chowk Near Bus Depot
3.	Thane	Gokhle Road -Malhar Cinema
		Jambli Naka - Lake immersion Point
		Main Road - Gaondevi Mandir, Naupada
		Pokhran Road - Vartak Nagar Chowk
		Wagle Estate - Raila Devi Lake
4.	Kalyan	Bhiwandi - Dhamankar Naka
		Shivaji Chawk
		Ulhasnagar Station
5.	Pune	Shivaji Nagar (Sakhar Sankul)
		Karve Road (Nul stop)
		Swar Gate (Tilak Road)
		Satara Road (Balaji Nagar)
		Shaniwar Peth (Shanivar Wada)
		Yerawada (Near Gunjan Theatre)
		Laxmi Road (Shagun Chowk)
		Kothrud (Near Shivaji Putala)
		Mahatma Phule Madai (Near Mandai)
		Sarus Baug (Mitra Mandal Chowk)
		Hadapsar (Nera Bhaji Mandai)
		Deccan (Nataraj Theater)
		Dagdu Sheth Mandir (City Post Chowk)
		Alka Chowk (Nera Alka Chowk)
		Babu Genu Chowk (Near Babu Genu Chowk)
		Khadaki (Near Bazar)
		M G Road (Babajan Chowk)
		Chapekar Chowk (Chinchwadgaon)
		Pimprigoan (Near Bazar)
		Thergaon (Dange Chowk)
6.	Nashik	CBS: Near Kanherewadi
		Panchavati : Near NAMCO Bank
		Dahipool : Near Nehru Police Chauki

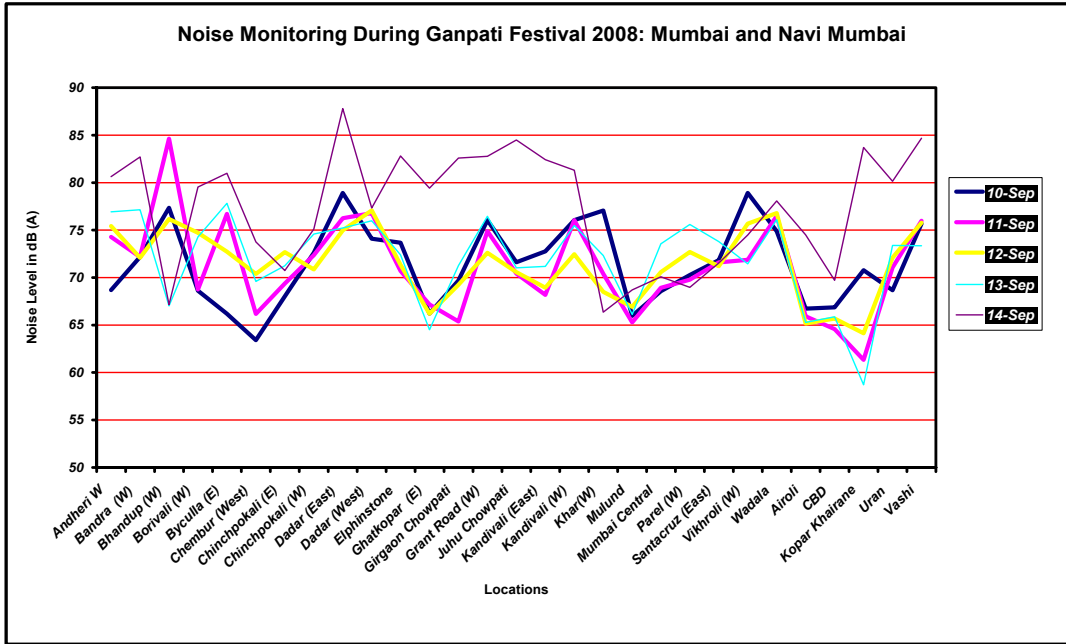
Sr. No.	City	Detailed Location
		CIDCO : Near Trimurti Chauk
		Bytco Point : Behind Bank of Baroda
7.	Aurangabad	Gulmandi
		City Chowk
		Kranti Chowk
		CIDCO Residential
		Usmanpura
8.	Nagpur	Cotton Market
		Gandhi Putla
		Golibar Chouk
		Reshimbag
		Abhayankar Nagar
9.	Amaravati	Rajkamal Square
		Rajapeth, Ambapeth Road
		Irvin Hospital Square
10.	Jalgaon	Subhash Chowk
		Shashtri Tower Chowk
		Shanipeth Police Station
11.	Kolhapur	Rajaram Puri (Near Rajaram Puri)
		Laxmi Puri (Near Laxmi Puri)
		Desara Chowk (Near Desara Chowk)
12.	Satara	Powai Naka (Near Powai Naka)
		Moti Chowk (Near Moti Chowk)
		Rajwada (Near Rajwada)

6. **Noise Levels at Various Locations in the City:** All the values are in $L_{eq}dB$ (A). The monitoring is done from 1800 hrs upto midnight (2400 hrs). The detailed result (mean) values are followed by graph of the locations.

Table 1: Noise Level in Mumbai and Navi Mumbai.

Sr. No.	Location	10 SEP	11 SEP	12 SEP	13 SEP	14 SEP
1	Andheri	68.7	74.3	75.4	76.9	80.6
2	Bandra	72.2	72.2	72.1	77.2	82.7
3	Bhandup	77.3	84.6	76.2	67.0	67.2
4	Borivali	68.6	68.8	74.7	74.3	79.5
5	Byculla	66.2	76.7	72.7	77.8	81.0
6	Chembur (East)	69.2	69.6	65.2	64.5	66.2
7	Chembur (West)	63.4	66.2	70.4	69.6	73.7
8	Chinchpokali (E)	68.0	69.4	72.7	71.2	70.7
9	Chinchpokali(W)	72.6	72.4	70.9	74.6	75.1
10	Dadar (East)	78.9	76.2	75.0	75.2	87.8
11	Dadar (West)	74.1	76.8	77.1	76.0	77.3
12	Elphinstone	73.7	70.7	71.3	72.4	82.8
13	Ghatkopar	66.2	67.2	66.2	64.5	79.4
14	Girgaon Chowpati	69.7	65.4	69.2	71.3	82.6
15	Grant Road	76.1	74.9	72.6	76.5	82.8
16	Juhu Chowpati	71.6	70.4	70.6	71.0	84.5
17	Kandivali (East)	72.8	68.2	68.9	71.2	82.4
18	Kandivali (W)	76.1	76.1	72.5	75.5	81.3
19	Khar	77.1	70.4	68.5	72.3	66.4
20	Mulund	66.0	65.3	66.9	66.1	68.7
21	Mumbai Central	68.6	68.9	70.6	73.6	70.1
22	Parel	70.3	69.8	72.7	75.6	69.0
23	Santacruz (East)	71.8	71.6	71.2	73.8	71.5

Sr. No.	Location	10 SEP	11 SEP	12 SEP	13 SEP	14 SEP
24	Vikhroli	78.9	71.9	75.7	71.5	74.5
25	Wadala	74.9	76.5	76.8	76.1	78.1
26	Airoli)	66.7	65.9	65.2	65.3	74.5
27	CBD	66.8	64.6	65.7	65.9	69.7
28	Kopar Khairane	70.8	61.3	64.1	58.7	83.7
29	Uran	68.7	71.1	72.1	73.4	80.2
30	Vashi	75.7	76.0	75.8	73.4	84.7

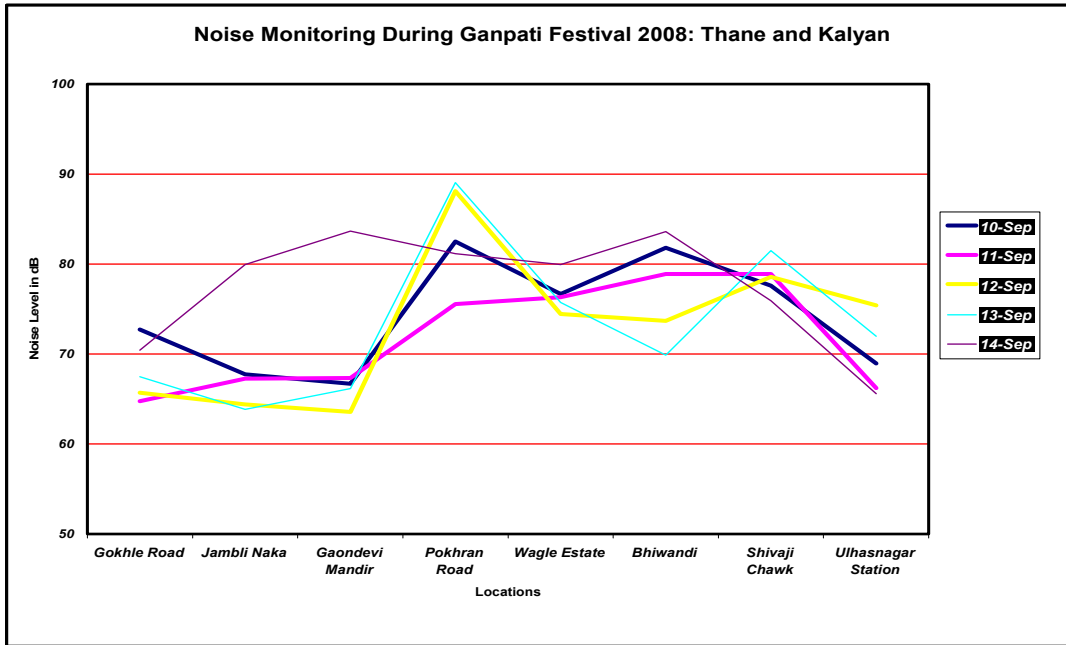


Mumbai: In Mumbai, a total of 25 locations were monitored from September 10 to 14, between 1800 hrs to 2400 hrs. The noise level at various locations is in the table below. It was observed that the minimum mean of sound level was 63.4 dBA and maximum mean was 87.8 dBA.

Navi Mumbai: In Navi Mumbai, a total of 5 locations were monitored from September 10 to 14, between 1800 hrs to 2400 hrs. The noise level at various locations is in the table below. It was observed that the minimum mean of sound level was 58.7 dBA and maximum mean was 84.7 dBA.

Table 2: Noise Level in Thane and Kalyan.

Sr. No.	Location	10 SEP	11 SEP	12 SEP	13 SEP	14 SEP
1	Gokhle Road	72.7	64.8	65.7	67.5	70.4
2	Jambli Nakat	67.7	67.3	64.4	63.8	80.0
3	Gaondevi Mandir	66.7	67.3	63.6	66.2	83.7
4	Pokhran Road	82.5	75.6	88.1	89.0	81.2
5	Wagle Estate	76.7	76.3	74.5	75.7	80.0
6	Bhiwandi	81.8	78.9	73.7	69.9	83.6
7	Shivaji Chawk	77.6	78.9	78.6	81.5	75.9
8	Ulhasnagar Station	69.0	66.2	75.4	72.0	65.6



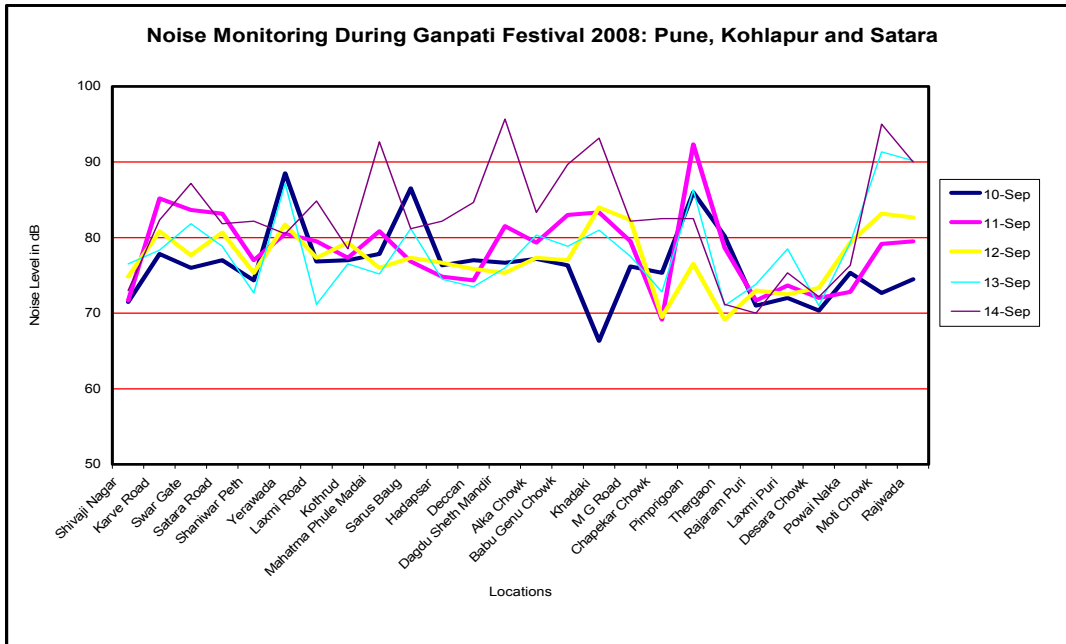
Thane: In Thane, a total of 5 locations were monitored from September 10 to 14, between 1800 hrs to 2400 hrs. The noise level at various locations is in the table below. It was observed that the minimum mean of sound level was 63.6 dBA and maximum mean was 89.0 dBA.

Kalyan: In Kalyan, 3 locations were monitored from September 10 to 14, between 1800 hrs to 2400 hrs. The noise level at various locations is in the table below. It was observed that the minimum mean of sound level was 65.6 dBA and maximum mean was 83.6 dBA.

Table 3: Noise Level in Pune, Kohlapur and Satara.

Sr. No.	Location	10 SEP	11 SEP	12 SEP	13 SEP	14 SEP
1	Shivaji Nagar	71.5	71.7	74.8	76.5	73.0
2	Karve Road	77.8	85.2	80.8	78.3	82.3
3	Swar Gate	76.0	83.7	77.7	81.8	87.2
4	Safara Road	77.0	83.2	80.7	78.8	81.8
5	Shaniwar Peth	74.3	77.0	75.3	72.7	82.2
6	Yerawada	88.5	80.5	81.7	87.2	80.5
7	Laxmi Road	76.8	79.5	77.3	71.2	84.8
8	Kothrud	77.0	77.3	79.3	76.5	78.5
9	Mahatma Phule Madai	77.8	80.8	76.0	75.2	92.7
10	Sarus Baug	86.5	76.8	77.3	81.2	81.2
11	Hadapsar	76.3	74.8	76.7	74.5	82.2
12	Deccan	77.0	74.3	75.8	73.5	84.7
13	Dagdu Sheth Mandir	76.7	81.5	75.3	76.0	95.7
14	Alka Chowk	77.2	79.3	77.3	80.3	83.3
15	Babu Genu Chowk	76.3	83.0	77.0	78.8	89.7
16	Khadaki	66.3	83.3	84.0	81.0	93.2
17	M G Road	76.2	79.5	82.3	77.5	82.2
18	Chapekar Chowk	75.3	69.2	69.5	72.8	82.5
19	Pimprigoan	86.0	92.3	76.5	86.3	82.5
20	Thergaon	80.2	78.7	69.2	71.0	71.2
21	Rajaram Puri	71.0	71.7	73.0	73.8	70.0
22	Laxmi Puri	72.0	73.7	72.5	78.5	75.3
23	Desara Chowk	70.3	72.0	73.3	71.0	72.2
24	Powai Naka	75.3	72.8	79.3	79.3	76.3
25	Mofi Chowk	72.7	79.2	83.2	91.3	95.0

Sr. No.	Location	10 SEP	11 SEP	12 SEP	13 SEP	14 SEP
26	Rajwada	74.5	79.5	82.7	90.2	90.0



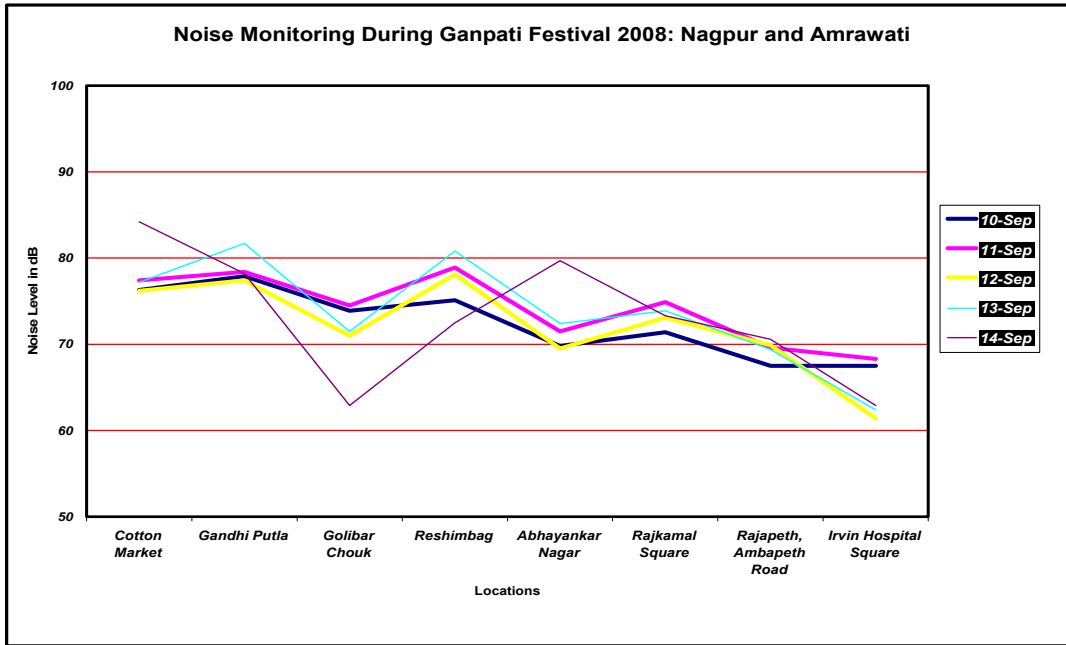
Pune: In Pune, a total of 20 locations were monitored from September 10 to 14, between 1800 hrs to 2400 hrs. The noise level at various locations is in the table below. It was observed that the minimum mean of sound level was 63.3 dBA and maximum mean was 93.2 dBA.

Kohlapur: In Kohlapur, a total of 3 locations were monitored from September 10 to 14, between 1800 hrs to 2400 hrs. The noise level at various locations is in the table below. It was observed that the minimum mean of sound level was 70.0 dBA and maximum mean was 78.5 dBA.

Satara: In Satara, a total of 3 locations were monitored from September 10 to 14, between 1800 hrs to 2400 hrs. The noise level at various locations is in the table below. It was observed that the minimum mean of sound level was 72.7 dBA and maximum mean was 95.0 dBA.

Table 4: Noise Level in Nagpur and Amrawati

Sr. No.	Location	10 SEP	11 SEP	12 SEP	13 SEP	14 SEP
1	Cotton Market	76.3	77.4	76.2	77.2	84.2
2	Gandhi Putla	77.9	78.4	77.4	81.7	78.2
3	Golibar Chouk	73.9	74.5	71.0	71.5	62.9
4	Reshimbag	75.1	78.9	78.1	80.8	72.5
5	Abhayankar Nagar	69.8	71.5	69.5	72.4	79.7
6	Rajkamal Square	71.4	74.9	73.1	73.9	73.3
7	Rajapeth	67.5	69.6	69.9	69.4	70.6
8	Irvin Hospital Square	67.5	68.3	61.4	62.4	62.9

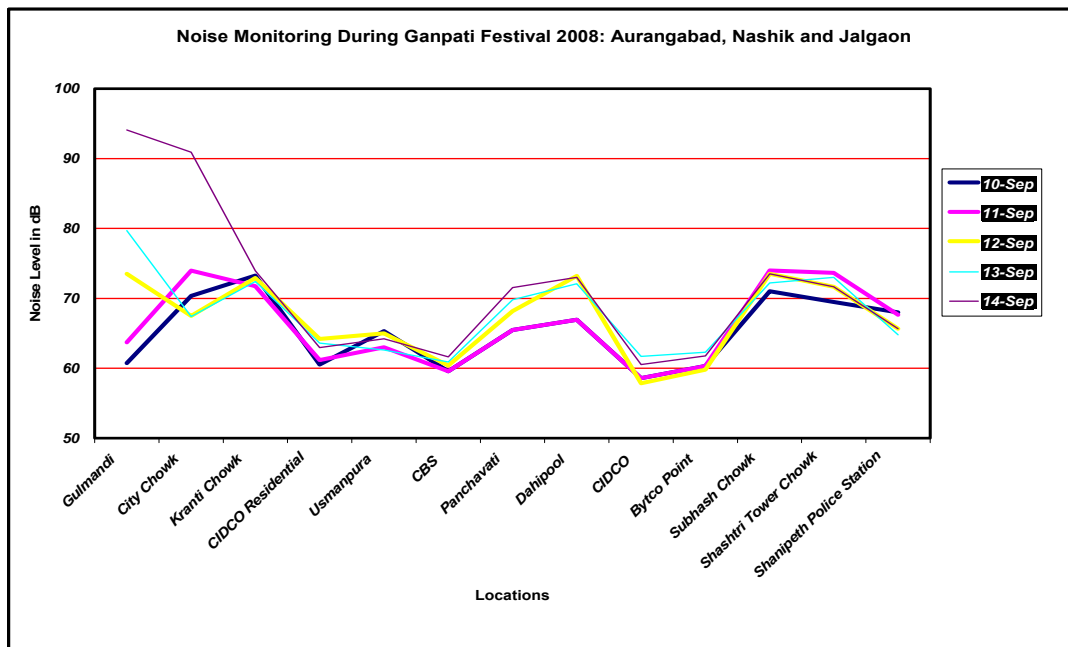


Nagpur: In Nagpur, a total of 5 locations were monitored from September 10 to 14, between 1800 hrs to 2400 hrs. The noise level at various locations is in the table below. It was observed that the minimum mean of sound level was 62.9 and maximum mean was 84.2 dBA.

Amrawati: In Amrawati, a total of 3 locations were monitored from September 10 to 14, between 1800 hrs to 2400 hrs. The noise level at various locations is in the table below. It was observed that the minimum mean of sound level was 61.4 dBA and maximum mean was 74.9 dBA.

Table 5: Noise Level in Aurangabad, Nashik and Jalgaon

Sr. No.	Location	10 SEP	11 SEP	12 SEP	13 SEP	14 SEP
1	Gulmandi	60.7	63.7	73.5	79.7	94.1
2	City Chowk	70.4	74.0	67.5	67.4	90.9
3	Kranti Chowk	73.3	71.7	72.9	72.4	74.0
4	CIDCO Residential	60.5	61.2	64.2	63.6	63.0
5	Usmanpura	65.3	63.0	65.0	62.6	64.2
6	CBS	59.6	60.4	60.9	61.6	77.7
7	Panchavati	65.5	68.2	69.8	71.5	96.8
8	Dahipool	66.9	73.2	72.1	73.0	91.5
9	CIDCO	58.6	57.9	61.7	60.5	71.7
10	Bytco Point	60.3	59.8	62.3	61.8	76.3
11	Subhash Chowk	71.0	74.0	73.5	72.2	73.5
12	Shashtri Tower Chowk	69.5	73.7	71.7	73.0	71.7
13	ShanipethPolice Station	68.0	67.7	65.7	64.8	65.7



Aurangabad: In Aurangabad, a total of 5 locations were monitored from September 10 to 14, between 1800 hrs to 2400 hrs. The noise level at various locations is in the table below. It was observed that the minimum mean of sound level was 60.5 dBA and maximum mean was 94.1 dBA.

Nashik: In Nashik, a total of 5 locations were monitored from September 10 to 14, between 1800 hrs to 2400 hrs. The noise level at various locations is in the table below. It was observed that the minimum mean of sound level was 57.9 dBA and maximum mean was 96.8 dBA.

Jalgaon: In Jalgaon, a total of 3 locations were monitored from September 10 to 14, between 1800 hrs to 2400 hrs. The noise level at various locations is in the table below. It was observed that the minimum mean of sound level was 65.7 dBA and maximum mean was 74.0 dBA.

7. Detailed Result of all the cities.

The detailed result of each location along with the graph is as follows. The detailed results are followed by the graph:-

i) Mumbai

Table1 (a): Results as on 10th September 2008

Location	1800-1900	1900-2000	2000-2100	2100-2200	2200-2300	2300-2400
Andheri	77.8	70.3	69.1	66.2	63.9	64.9
Bandra	75.3	68.4	72.8	74.6	72.0	70.1
Bhandup	74.9	77.1	76.9	79.1	80.8	75.2
Borivali	71.4	70.5	70.8	70.5	65.9	62.6
Byculla	64.6	67.8	67.9	64.7	62.3	69.9
Chembur (E)	78.1	73.0	68.8	68.9	64.0	62.4
Chembur (W)	68.8	64.8	63.0	58.5	70.6	54.9
Chinchpokali (E)	71.0	72.2	66.5	62.7	68.8	67.0
Chinchpokali (W)	73.6	75.6	73.3	71.8	71.0	70.4
Dadar (E)	80.3	79.1	78.8	80.6	79.2	75.5
Dadar (W)	71.5	72.3	79.4	80.1	72.0	69.3
Elphinstone	76.0	74.7	73.6	75.1	74.8	68.1
Ghatkopar	65.9	66.9	66.0	65.9	66.6	65.9
Girgaon Chowpati	76.1	80.7	63.0	65.3	68.2	65.0
Grant Road	80.4	74.3	73.3	73.3	75.3	79.7
Juhu Chowpati	73.0	71.7	77.9	71.9	68.7	66.6

Location	1800-1900	1900-2000	2000-2100	2100-2200	2200-2300	2300-2400
Kandivali (E)	72.8	75.3	76.3	76.3	68.5	67.4
Kandivali (W)	76.9	75.2	77.7	74.5	74.9	77.0
Khar	84.6	82.8	82.2	76.7	73.0	63.1
Mulund	68.0	65.9	66.4	65.5	66.6	63.5
Mumbai Central	71.1	70.1	68.3	73.3	67.5	61.2
Parel	76.7	69.7	76.6	71.2	64.3	63.2
Santacruz (E)	73.0	72.3	72.4	73.4	70.7	69.2
Vikhroli	81.0	80.4	80.1	80.7	77.6	73.7
Wadala	77.6	70.8	76.4	80.4	75.6	68.6

Table 1(b): Results as on 11th September

Location	1800-1900	1900-2000	2000-2100	2100-2200	2200-2300	2300-2400
Andheri	76.1	80.1	70.4	72.9	73.5	72.7
Bandra	75.3	68.4	72.8	74.6	72.0	70.1
Bhandup	82.3	84.7	86.3	85.1	84.5	84.9
Borivali	71.5	70.6	71.0	70.5	66.3	62.8
Byculla	77.2	82.9	66.8	79.9	74.2	79.3
Chembur (E)	78.4	73.8	69.0	69.1	63.9	63.5
Chembur (W)	66.7	69.0	64.7	63.8	66.3	66.5
Chinchpokali (E)	68.2	71.3	67.7	67.9	69.5	71.9
Chinchpokali (W)	73.5	73.9	74.6	73.1	70.6	68.5
Dadar (E)	75.6	77.9	74.7	76.8	73.8	78.7
Dadar (W)	77.3	77.4	76.2	77.1	74.8	77.9
Elphinstone	70.5	71.7	69.9	72.1	75.8	64.4
Ghatkopar	67.6	65.9	68.5	70.3	65.9	64.9
Girgaon Chowpati	65.0	64.9	65.1	62.7	65.5	69.1
Grant Road	73.0	75.1	72.6	74.7	74.4	79.7
Juhu Chowpati	71.7	70.5	70.6	70.6	69.8	69.4
Kandivali (E)	63.2	69.3	69.1	68.5	69.8	69.2
Kandivali (W)	76.9	75.2	77.7	74.5	74.9	77.0
Khar	69.7	73.1	74.4	72.1	68.8	64.5
Mulund	66.9	66.9	66.5	64.4	63.8	63.1
Mumbai Central	70.2	71.2	70.3	73.6	67.6	60.6
Parel	76.2	69.7	76.6	71.2	64.3	60.7
Santacruz (E)	73.4	72.0	72.6	72.8	70.1	68.7
Vikhroli	74.9	67.6	69.8	67.7	75.8	75.5
Wadala	77.5	77.2	76.8	79.4	74.7	73.3

Table 1(c): Results as on 12th September

Location	1800-1900	1900-2000	2000-2100	2100-2200	2200-2300	2300-2400
Andheri	78.6	78.6	68.2	75.4	72.5	79.3
Bandra	76.4	76.3	71.0	68.1	72.3	68.5
Bhandup	77.4	77.1	77.4	76.5	76.6	71.9
Borivali	74.4	73.5	75.6	75.8	72.5	76.5
pByculla	72.9	70.7	73.7	74.1	74.7	70.1
Chembur (E)	82.5	82.5	60.1	56.4	50.2	59.3
Chembur (W)	68.8	71.4	70.0	72.3	69.6	70.2
Chinchpokali (E)	74.2	76.7	72.9	72.3	65.8	74.1
Chinchpokali (W)	72.5	72.1	71.6	70.6	70.1	68.3
Dadar (E)	74.9	75.7	75.0	75.6	74.7	74.0
Dadar (W)	76.5	77.0	78.2	78.3	75.3	77.1
Elphinstone	72.4	70.6	69.7	69.7	71.7	74.0
Ghatkopar	64.8	67.7	66.3	67.8	65.3	65.4

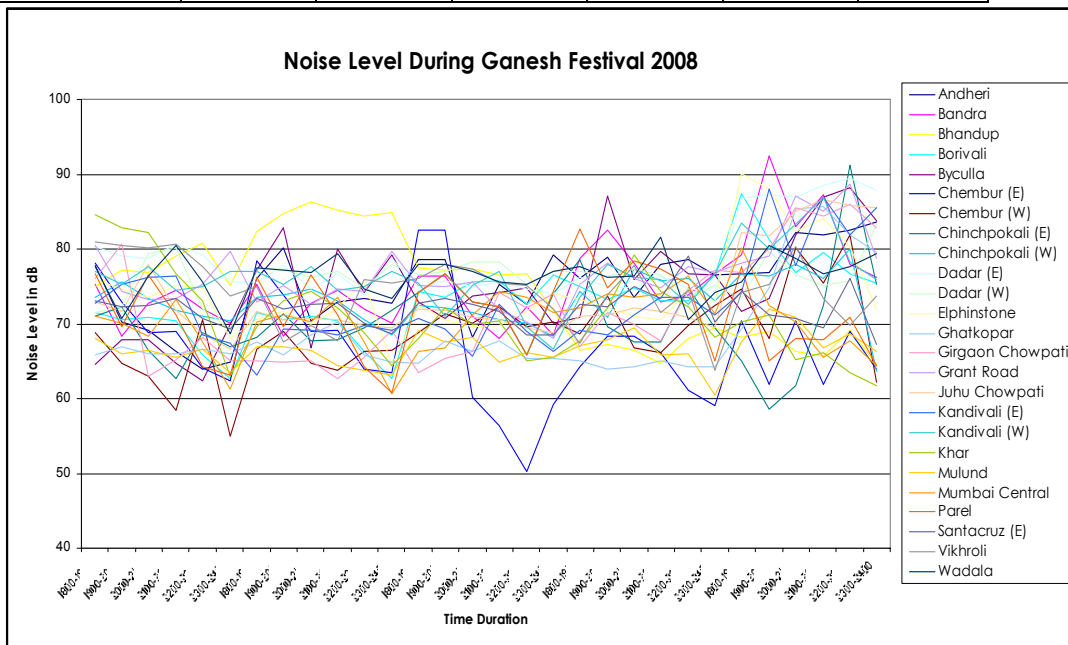
Location	1800-1900	1900-2000	2000-2100	2100-2200	2200-2300	2300-2400
Girgaon Chowpati	63.4	65.4	66.4	74.2	72.1	74.0
Grant Road	75.2	74.9	75.5	71.9	70.2	68.1
Juhu Chowpati	71.9	71.8	70.9	70.6	69.5	68.8
Kandivali (E)	70.7	69.4	65.7	72.6	68.9	66.3
Kandivali (W)	75.4	71.1	75.1	77.0	69.7	66.6
Khar	68.0	72.2	69.9	70.4	65.0	65.4
Mulund	69.1	67.5	68.2	64.9	66.2	65.5
Mumbai Central	66.2	66.7	71.2	74.3	73.5	71.5
Parel	74.2	76.7	72.9	72.3	65.8	74.3
Santacruz (E)	72.7	73.3	72.6	71.6	68.5	68.5
Vikhroli	76.1	77.9	77.4	75.5	75.2	72.0
Wadala	78.0	77.9	77.0	75.7	75.2	77.0

Table 1(d): Results as on 13th September

Location	1800-1900	1900-2000	2000-2100	2100-2200	2200-2300	2300-2400
Andheri	76.0	78.9	73.6	78.0	78.6	76.6
Bandra	78.8	82.6	78.2	72.9	73.9	76.7
Bhandup	66.5	67.2	66.4	64.7	68.1	69.5
Borivali	74.9	73.2	74.9	73.1	73.1	76.6
Byculla	70.9	87.1	75.9	79.8	76.7	76.6
Chembur (E)	64.2	68.4	68.3	66.1	61.2	59.1
Chembur (W)	68.7	73.8	66.8	66.1	69.8	72.4
Chinchpokali (E)	78.5	69.6	67.6	67.5	74.8	69.5
Chinchpokali (W)	74.4	70.9	77.4	75.7	76.1	73.0
Dadar (E)	76.2	74.9	74.9	76.4	74.6	74.4
Dadar (W)	77.0	76.4	77.3	76.6	73.5	75.1
Elphinstone	73.2	72.2	71.0	70.5	74.6	72.9
Ghatkopar	65.1	64.0	64.3	65.0	64.3	64.3
Girgaon Chowpati	67.0	71.4	69.9	67.7	74.5	77.1
Grant Road	75.2	78.1	76.1	74.9	77.6	76.8
Juhu Chowpati	71.0	71.2	72.1	71.6	70.8	69.4
Kandivali (E)	69.1	68.6	71.2	73.5	73.5	71.1
Kandivali (W)	73.5	77.9	76.2	75.9	72.7	76.7
Khar	67.7	72.2	79.2	74.3	72.3	68.2
Mulund	67.1	67.9	69.5	65.8	66.0	60.5
Mumbai Central	72.1	73.9	73.5	74.1	76.4	71.4
Parel	82.7	74.8	78.5	77.3	75.2	65.0
Santacruz (E)	72.7	72.4	75.0	73.4	79.0	70.3
Vikhroli	67.4	73.8	77.7	71.5	74.5	63.8
Wadala	77.7	76.3	76.4	81.6	70.5	74.2

Table 1(e): Results as on 14th September

Location	1800-1900	1900-2000	2000-2100	2100-2200	2200-2300	2300-2400
Andheri	76.7	76.9	82.2	81.8	82.5	83.6
Bandra	79.3	92.4	83.0	87.3	78.0	76.3
Bhandup	68.2	69.1	66.3	65.6	69.1	64.6
Borivali	87.5	81.3	76.9	79.5	76.7	75.5
Byculla	71.7	73.4	82.0	86.9	88.2	83.8
Chembur (E)	70.4	61.8	70.4	61.9	68.9	63.9
Chembur (W)	74.6	68.1	80.2	75.5	81.8	62.3
Chinchpokali (E)	65.0	58.6	61.7	72.4	91.3	75.3
Chinchpokali (W)	76.7	76.4	77.9	76.1	80.0	63.6
Dadar (E)	86.8	87.3	86.9	88.5	89.4	87.9
Dadar (W)	73.4	79.7	76.6	75.2	75.8	83.2
Elphinstone	90.0	88.1	82.4	84.1	80.4	72.0
Ghatkopar	69.3	74.8	85.3	85.7	81.9	79.5
Girgaon Chowpati	76.8	80.0	85.5	84.3	86.0	82.8
Grant Road	78.2	79.0	87.2	85.0	88.7	78.7
Juhu Chowpati	82.2	81.8	85.0	86.6	85.9	85.5
Kandivali (E)	74.2	88.1	77.8	87.0	82.0	85.6
Kandivali (W)	83.5	80.0	83.3	86.9	78.3	75.8
Khar	70.2	71.2	65.2	66.2	63.5	61.8
Mulund	67.6	72.0	70.8	66.8	68.7	66.4
Mumbai Central	80.1	72.5	70.2	65.6	67.7	64.4
Parel	77.6	65.0	68.1	67.9	70.9	64.4
Santacruz (E)	74.4	71.2	70.7	69.4	76.1	67.3
Vikhroli	74.2	75.3	80.4	73.4	69.8	73.7
Wadala	75.5	80.6	78.7	76.6	77.6	79.4



ii) Navi Mumbai

Table 2(a): Results as on 10th September 2008

Location	1800-1900	1900-2000	2000-2100	2100-2200	2200-2300	2300-2400
Airoli	68.5	72.7	77.0	68.3	60.4	53.4
CBD	69.3	69.9	68.6	67.3	63.7	62.3
Kopar Khairane	74.0	71.5	69.9	72.9	69.1	67.3
Uran	76.1	65.2	58.7	67.2	66.4	78.4
Vashi	72.8	73.7	78.5	78.0	75.7	75.5

Table 2(b): Results as on 11th September 2008

Location	1800-1900	1900-2000	2000-2100	2100-2200	2200-2300	2300-2400
Airoli	65.4	68.8	66.6	70.9	69.5	54.4
CBD	63.5	64.9	68.4	65.9	64.1	60.7
Kopar Khairane	63.1	67.1	59.5	64.5	57.6	56.3
Uran	69.8	67.2	67.7	70.3	76.8	74.7
Vashi	75.0	75.5	77.2	74.7	71.2	82.4

Table 2(c): Results as on 12th September 2008

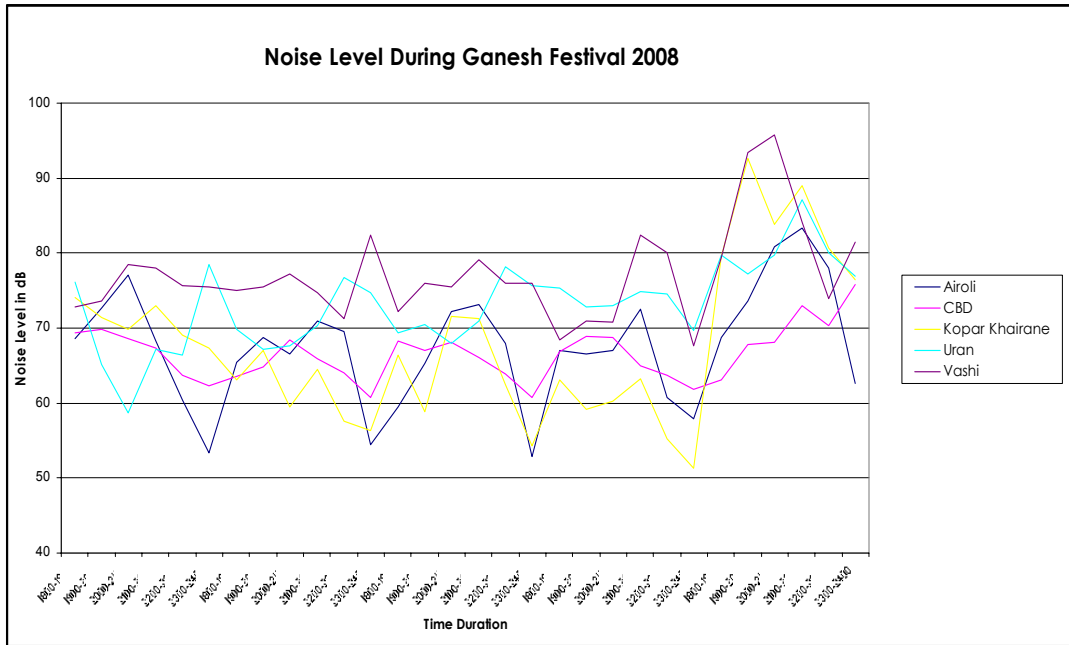
Location	1800-1900	1900-2000	2000-2100	2100-2200	2200-2300	2300-2400
Airoli	59.5	65.3	72.2	73.1	68.0	52.9
CBD	68.4	67.0	68.0	66.0	63.9	60.8
Kopar Khairane	66.4	58.9	71.6	71.2	62.4	54.4
Uran	69.4	70.5	67.9	70.9	78.2	75.7
Vashi	72.1	75.9	75.5	79.2	76.0	75.9

Table 2(d): Results as on 13th September 2008

Location	1800-1900	1900-2000	2000-2100	2100-2200	2200-2300	2300-2400
Airoli	67.0	66.6	67.0	72.5	60.8	57.9
CBD	66.8	68.9	68.7	65.0	63.8	61.9
Kopar Khairane	63.2	59.1	60.2	63.2	55.2	51.3
Uran	75.4	72.8	73.0	74.9	74.6	69.7
Vashi	68.4	71.0	70.7	82.4	80.0	67.6

Table 2(e): Results as on 14th September 2008

Location	1800-1900	1900-2000	2000-2100	2100-2200	2200-2300	2300-2400
Airoli	68.7	73.7	80.8	83.3	77.9	62.6
CBD	63.1	67.8	68.1	73.0	70.4	75.9
Kopar Khairane	79.5	92.7	83.8	89.0	80.7	76.5
Uran	79.7	77.3	79.7	87.2	80.1	77.0
Vashi	79.4	93.4	95.8	84.1	73.9	81.4



iii) Thane

Table 3(a): Results as on 10th September 2008

Location	1800-1900	1900-2000	2000-2100	2100-2200	2200-2300	2300-2400
Gokhle Road	76.2	78.3	74.4	71.3	67.9	68.3
Jambli Naka	68.3	65.1	61.8	78.3	74.6	58.4
Naupada	71.5	68.8	73.8	66.9	63.3	56.0
Pokhran Road	78.7	83.7	86.7	85.3	81.7	78.9
Wagle Estate	79.1	77.6	81.5	76.4	73.5	72.0

Table 3(b): Results as on 11th September 2008

Location	1800-1900	1900-2000	2000-2100	2100-2200	2200-2300	2300-2400
Gokhle Road	68.4	69.1	64.1	65.6	64.2	57.3
Jambli Naka	67.1	66.9	77.1	71.6	61.6	59.2
Naupada	62.8	74.5	71.5	70.9	63.0	61.4
Pokhran Road	71.0	75.4	82.6	79.5	75.1	69.8
Wagle Estate	78.9	79.0	76.5	76.6	74.7	72.2

Table 3(c): Results as on 12th September 2008

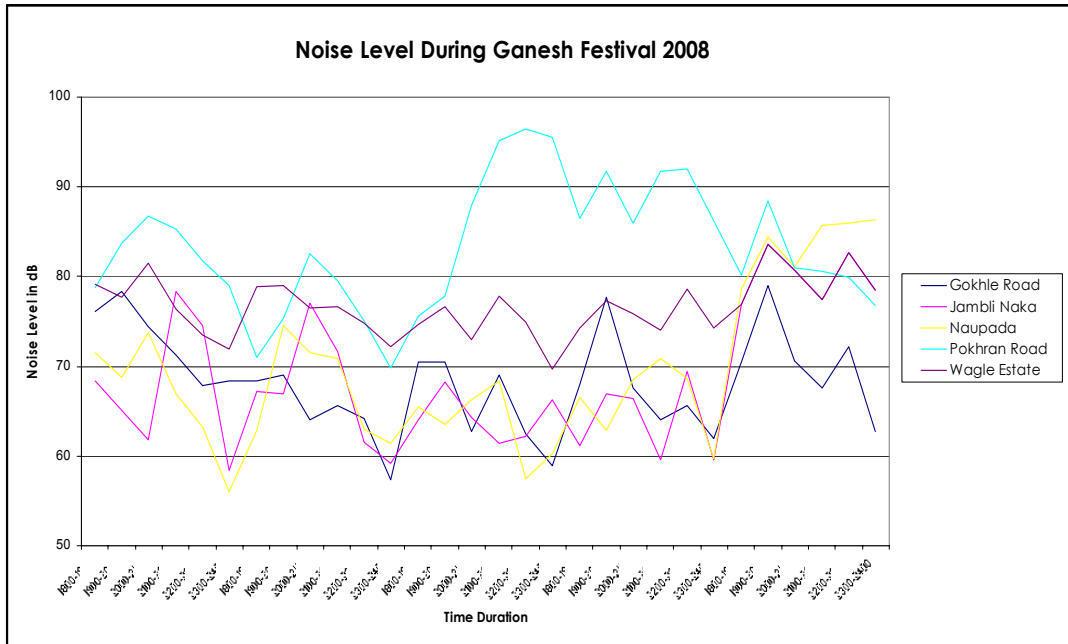
Location	1800-1900	1900-2000	2000-2100	2100-2200	2200-2300	2300-2400
Gokhle Road	70.5	70.5	62.7	69.1	62.5	59.0
Jambli Naka	64.1	68.2	64.3	61.4	62.3	66.2
Naupada	65.5	63.5	66.3	68.4	57.5	60.2
Pokhran Road	75.6	77.8	88.0	95.2	96.5	95.6
Wagle Estate	74.7	76.7	73.0	77.9	74.9	69.7

Table 3(d): Results as on 13th September 2008

Location	1800-1900	1900-2000	2000-2100	2100-2200	2200-2300	2300-2400
Gokhle Road	68.0	77.7	67.6	64.0	65.7	62.0
Jambli Naka	61.2	67.0	66.4	59.6	69.4	59.6
Naupada	66.6	62.8	68.4	70.8	68.6	59.7
Pokhran Road	86.5	91.8	86.0	91.8	92.0	86.3
Wagle Estate	74.3	77.4	75.9	74.1	78.6	74.3

Table 3(e): Results as on 14th September 2008

Location	1800-1900	1900-2000	2000-2100	2100-2200	2200-2300	2300-2400
Gokhle Road	70.5	79.0	70.6	67.5	72.2	62.7
Jambli Naka	76.9	83.6	80.7	77.4	82.7	78.4
Naupada	78.6	84.3	81.1	85.8	86.0	86.4
Pokhran Road	80.1	88.5	80.9	80.6	79.9	76.8
Wagle Estate	76.9	83.6	80.7	77.4	82.7	78.4



iv) Pune

Table 4(a): Results as on 10th September 2008

Location	1800-1900	1900-2000	2000-2100	2100-2200	2200-2300	2300-2400
Shivaji Nagar	72.0	77.0	73.0	75.0	68.0	64.0
Karve Road	83.0	85.0	88.0	74.0	72.0	65.0
Swar Gate	80.0	78.0	81.0	76.0	75.0	66.0
Satara Road	78.0	82.0	83.0	75.0	73.0	71.0
Shaniwar Peth	78.0	74.0	77.0	80.0	71.0	66.0
Yerawada	91.0	89.0	94.0	94.0	90.0	73.0
Laxmi Road	74.0	81.0	84.0	77.0	74.0	71.0
Kothrud	66.0	88.0	83.0	83.0	72.0	70.0
Mahatma Phule Madai	85.0	86.0	77.0	75.0	76.0	68.0
Sarus Baug	89.0	90.0	92.0	100.0	72.0	76.0
Hadapsar	80.0	82.0	86.0	78.0	68.0	64.0
Deccan	78.0	74.0	77.0	75.0	82.0	76.0
Dagdu Sheth Mandir	80.0	77.0	81.0	80.0	74.0	68.0
Alka Chowk	86.0	81.0	78.0	83.0	72.0	63.0
Babu Genu Chowk	82.0	85.0	75.0	76.0	77.0	63.0
Khadaki	72.0	69.0	70.0	67.0	63.0	57.0
M G Road	90.0	79.0	82.0	75.0	68.0	63.0
Chapekar Chowk	78.0	89.0	78.0	79.0	66.0	62.0
Pimprigoan	93.0	93.0	95.0	97.0	70.0	68.0
Thergaon	86.0	90.0	85.0	77.0	73.0	70.0

Table 4(b): Results as on 11th September 2008

Location	1800-1900	1900-2000	2000-2100	2100-2200	2200-2300	2300-2400
Shivaji Nagar	77.0	73.0	73.0	75.0	70.0	62.0
Karve Road	89.0	90.0	90.0	89.0	80.0	73.0
Swar Gate	84.0	78.0	80.0	90.0	86.0	84.0
Satara Road	86.0	88.0	87.0	87.0	81.0	70.0
Shaniwar Peth	73.0	74.0	79.0	84.0	81.0	71.0
Yerawada	86.0	81.0	85.0	93.0	76.0	62.0
Laxmi Road	65.0	87.0	85.0	87.0	85.0	68.0
Kothrud	79.0	79.0	80.0	80.0	76.0	70.0
Mahatma Phule Madai	78.0	80.0	83.0	85.0	82.0	77.0
Sarus Baug	79.0	78.0	84.0	81.0	71.0	68.0
Hadapsar	81.0	83.0	86.0	72.0	66.0	61.0
Deccan	77.0	78.0	77.0	76.0	70.0	68.0
Dagdu Sheth Mandir	80.0	78.0	83.0	85.0	82.0	81.0
Alka Chowk	72.0	80.0	86.0	80.0	83.0	75.0
Babu Genu Chowk	93.0	87.0	90.0	80.0	79.0	69.0
Khadaki	88.0	93.0	94.0	93.0	67.0	65.0
M G Road	75.0	78.0	89.0	85.0	81.0	69.0
Chapekar Chowk	69.0	70.0	72.0	82.0	62.0	60.0
Pimprigoan	92.0	94.0	101.0	102.0	99.0	66.0
Thergaon	86.0	83.0	91.0	83.0	69.0	60.0

Table 4(c): Results as on 12th September 2008

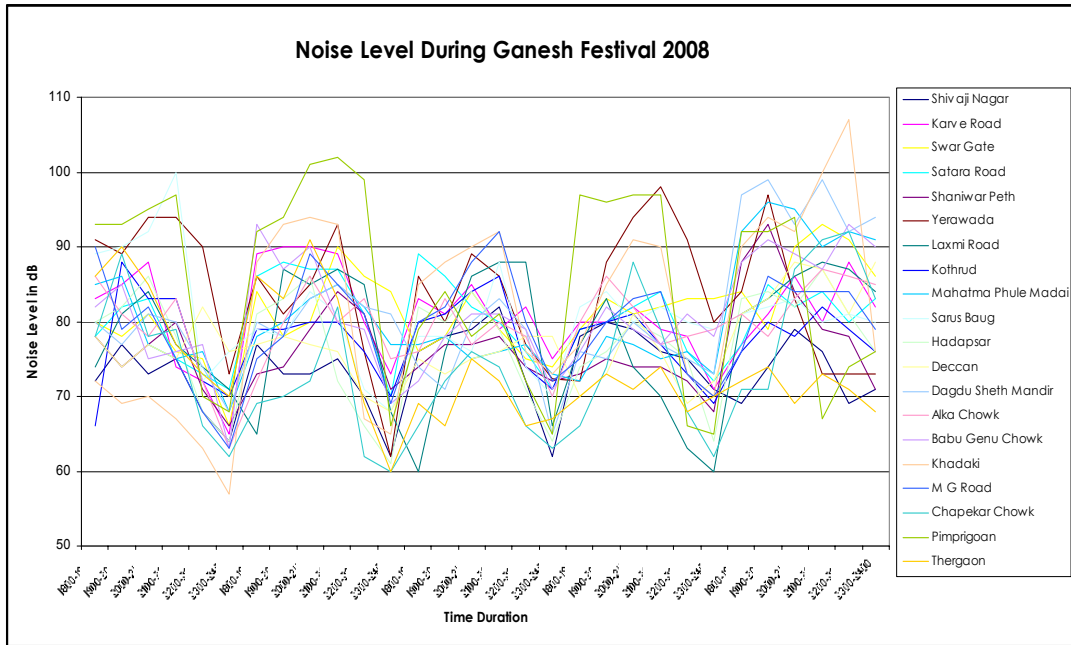
Location	1800-1900	1900-2000	2000-2100	2100-2200	2200-2300	2300-2400
Shivaji Nagar	76.0	78.0	79.0	82.0	72.0	62.0
Karve Road	83.0	81.0	85.0	79.0	82.0	75.0
Swar Gate	76.0	78.0	84.0	79.0	75.0	74.0
Satara Road	89.0	86.0	82.0	80.0	76.0	71.0
Shaniwar Peth	74.0	77.0	77.0	78.0	74.0	72.0
Yerawada	86.0	80.0	89.0	86.0	77.0	72.3
Laxmi Road	60.0	76.0	86.0	88.0	88.0	66.0
Kothrud	80.0	81.0	84.0	86.0	74.0	71.0
Mahatma Phule Madan	77.0	78.0	75.0	76.0	77.0	73.0
Sarus Baug	78.0	78.0	76.0	88.0	74.0	70.0
Hadapsar	82.0	80.0	84.0	79.0	71.0	64.0
Deccan	75.0	73.0	75.0	76.0	78.0	78.0
Dagdu Sheth Mandir	74.0	71.0	80.0	83.0	79.0	65.0
Alka Chowk	76.0	83.0	77.0	80.0	78.0	70.0
Babu Genu Chowk	72.0	78.0	81.0	81.0	79.0	71.0
Khadaki	85.0	88.0	90.0	92.0	76.0	73.0
M G Road	80.0	82.0	88.0	92.0	80.0	72.0
Chapekar Chowk	66.0	72.0	76.0	74.0	66.0	63.0
Pimprigoan	79.0	84.0	78.0	81.0	72.0	65.0
Thergaon	69.0	66.0	75.0	72.0	66.0	67.0

Table 4(d): Results as on 13th September 2008

Location	1800-1900	1900-2000	2000-2100	2100-2200	2200-2300	2300-2400
Shivaji Nagar	78.0	80.0	79.0	76.0	75.0	71.0
Karve Road	80.0	80.0	82.0	79.0	78.0	71.0
Swar Gate	79.0	83.0	81.0	82.0	83.0	83.0
Satara Road	79.0	80.0	82.0	84.0	76.0	72.0
Shaniwar Peth	73.0	75.0	74.0	74.0	72.0	68.0
Yerawada	72.0	88.0	94.0	98.0	91.0	80.0
Laxmi Road	77.0	83.0	74.0	70.0	63.0	60.0
Kothrud	79.0	80.0	81.0	77.0	73.0	69.0
Mahatma Phule Madai	72.0	78.0	77.0	75.0	76.0	73.0
Sarus Baug	82.0	84.0	80.0	82.0	80.0	79.0
Hadapsar	74.0	76.0	80.0	78.0	75.0	64.0
Deccan	70.0	73.0	81.0	76.0	69.0	72.0
Dagdu Sheth Mandir	76.0	75.0	80.0	77.0	75.0	73.0
Alka Chowk	80.0	86.0	82.0	77.0	78.0	79.0
Babu Genu Chowk	76.0	82.0	79.0	77.0	81.0	78.0
Khadaki	77.0	85.0	91.0	90.0	73.0	70.0
M G Road	75.0	80.0	83.0	84.0	73.0	70.0
Chapekar Chowk	66.0	74.0	88.0	79.0	68.0	62.0
Pimprigoan	97.0	96.0	97.0	97.0	66.0	65.0
Thergaon	70.0	73.0	71.0	74.0	68.0	70.0

Table 4(e): Results as on 14th September 2008

Location	1800-1900	1900-2000	2000-2100	2100-2200	2200-2300	2300-2400
Shivaji Nagar	69.0	74.0	79.0	76.0	69.0	71.0
Karve Road	77.0	81.0	86.0	80.0	88.0	82.0
Swar Gate	84.0	79.0	90.0	93.0	91.0	86.0
Satara Road	77.0	85.0	82.0	84.0	80.0	83.0
Shaniwar Peth	88.0	93.0	84.0	79.0	78.0	71.0
Yerawada	84.0	97.0	83.0	73.0	73.0	73.0
Laxmi Road	81.0	83.0	86.0	88.0	87.0	84.0
Kothrud	76.0	80.0	78.0	82.0	79.0	76.0
Mahatma Phule Madai	92.0	96.0	95.0	90.0	92.0	91.0
Sarus Baug	81.0	82.0	83.0	80.0	81.0	80.0
Hadapsar	83.0	84.0	82.0	87.0	81.0	76.0
Deccan	81.0	83.0	88.0	87.0	81.0	88.0
Dagdu Sheth Mandir	97.0	99.0	93.0	99.0	92.0	94.0
Alka Chowk	81.0	78.0	83.0	87.0	86.0	85.0
Babu Genu Chowk	88.0	91.0	89.0	87.0	93.0	90.0
Khadaki	90.0	94.0	92.0	100.0	107.0	76.0
M G Road	76.0	86.0	84.0	84.0	84.0	79.0
Chapekar Chowk	71.0	71.0	87.0	91.0	92.0	83.0
Pimprigoan	92.0	92.0	94.0	67.0	74.0	76.0
Thergaon	72.0	74.0	69.0	73.0	71.0	68.0



v) Nashik

Table 5(a): Results as on 10th September 2008

Location	1800-1900	1900-2000	2000-2100	2100-2200	2200-2300	2300-2400
CBS	63.7	64.2	61.3	59.0	55.0	54.2
Panchavati	65.1	65.8	67.8	72.5	61.1	60.6
Dahipool	65.8	66.2	66.4	66.9	72.0	64.3
CIDCO	70.5	70.3	67.6	53.6	47.7	41.9
Bytco Point	54.1	61.4	64.9	64.4	59.9	57.3

Table 5(b): Results as on 11th September 2008

Location	1800-1900	1900-2000	2000-2100	2100-2200	2200-2300	2300-2400
CBS	64.6	60.8	60.3	62.8	59.1	54.8
Panchavati	55.2	56.8	64.2	63.9	60.2	58.4
Dahipool	64.3	58.7	68.9	64.7	47.6	42.9
CIDCO	70.9	74.1	72.7	73.1	63.9	54.3
Bytco Point	72.3	73.5	79.0	74.3	74.0	66.2

Table 5(c): Results as on 12th September 2008

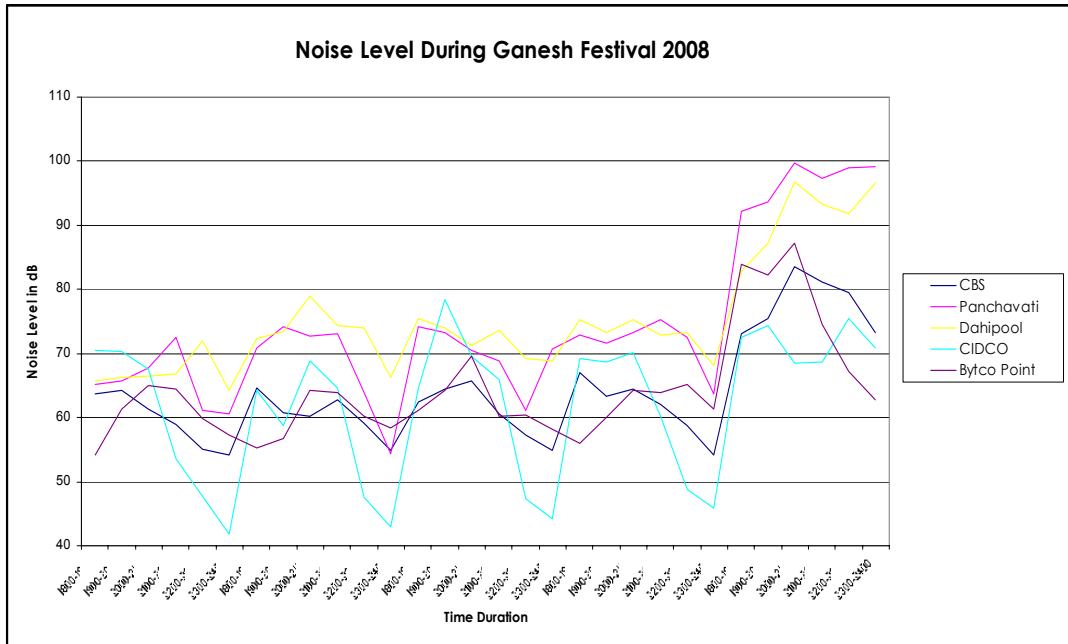
Location	1800-1900	1900-2000	2000-2100	2100-2200	2200-2300	2300-2400
CBS	62.4	64.4	65.8	60.5	57.2	54.8
Panchavati	74.2	73.3	70.5	68.8	61.1	70.7
Dahipool	75.5	74.0	71.3	73.6	69.3	68.9
CIDCO	64.7	78.4	69.6	65.9	47.4	44.3
Bytco Point	61.2	64.2	69.5	60.2	60.4	58.2

Table 5(d): Results as on 13th September 2008

Location	1800-1900	1900-2000	2000-2100	2100-2200	2200-2300	2300-2400
CBS	67.0	63.3	64.5	62.0	58.8	54.1
Panchavati	72.8	71.6	73.3	75.3	72.5	63.7
Dahipool	75.2	73.3	75.2	72.8	73.3	68.2
CIDCO	69.3	68.7	70.1	60.3	48.9	45.9
Bytco Point	56.0	60.1	64.2	63.9	65.1	61.3

Table 5(e): Results as on 14th September 2008

Location	1800-1900	1900-2000	2000-2100	2100-2200	2200-2300	2300-2400
CBS	73.1	75.4	83.5	81.2	79.5	73.3
Panchavati	92.2	93.7	99.8	97.3	98.9	99.1
Dahipool	82.9	87.3	96.7	93.3	91.9	96.6
CIDCO	72.6	74.3	68.4	68.6	75.5	70.9
Bytco Point	83.9	82.2	87.2	74.5	67.1	62.8



vi) Aurangabad

Table 6(a): Results as on 10th September 2008

Location	1800-1900	1900-2000	2000-2100	2100-2200	2200-2300	2300-2400
Gulmandi	64.6	63.6	61.3	61.0	58.2	55.6
City Chowk	85.1	73.6	73.0	70.8	72.1	65.8
Kranti Chowk	78.7	76.5	75.6	71.8	70.3	66.8
CIDCO Residential	65.8	65.0	64.7	58.0	55.1	53.8
Usmanpura	71.0	72.4	68.4	63.0	60.1	56.7

Table 6(b): Results as on 11th September 2008

Location	1800-1900	1900-2000	2000-2100	2100-2200	2200-2300	2300-2400
Gulmandi	67.1	65.3	66.6	65.4	62.0	55.8
City Chowk	84.5	71.4	72.4	71.1	74.8	69.6
Kranti Chowk	74.0	74.8	73.4	72.2	69.8	66.3
CIDCO Residential	72.4	65.4	68.6	52.2	51.3	61.2
Usmanpura	61.8	65.3	62.3	66.4	64.1	58.1

Table 6(c): Results as on 12th September 2008

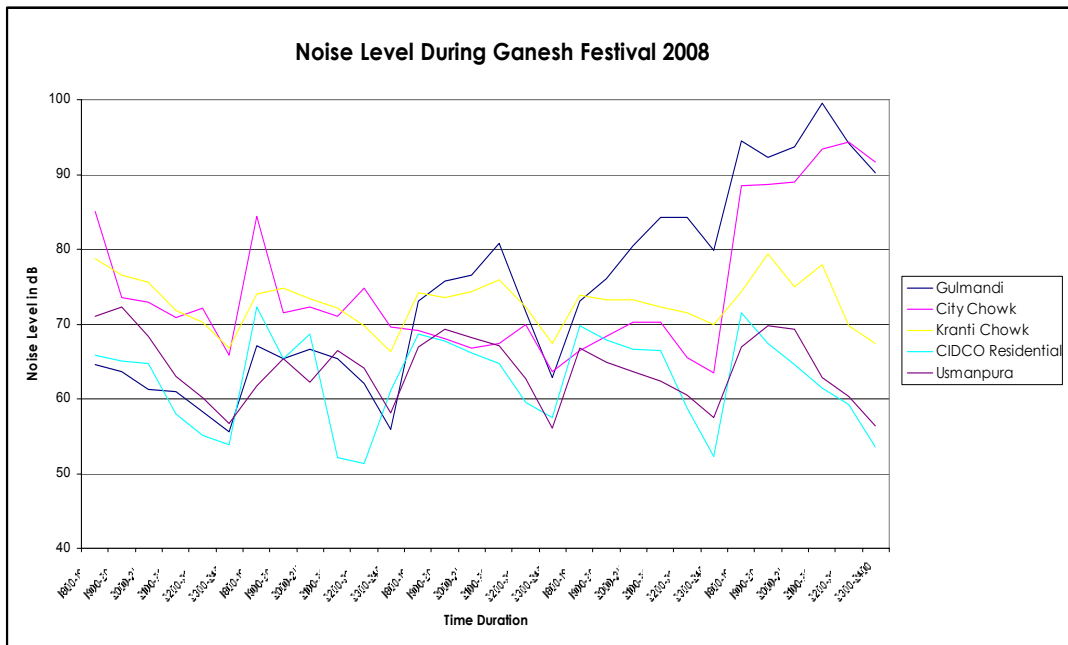
Location	1800-1900	1900-2000	2000-2100	2100-2200	2200-2300	2300-2400
Gulmandi	73.1	75.8	76.6	80.8	71.6	62.9
City Chowk	69.2	68.0	66.7	67.4	70.0	63.7
Kranti Chowk	74.2	73.5	74.4	75.9	72.3	67.4
CIDCO Residential	68.6	67.7	66.1	64.8	59.5	57.5
Usmanpura	66.9	69.3	68.2	67.1	62.7	56.1

Table 6(d): Results as on 13th September 2008

Location	1800-1900	1900-2000	2000-2100	2100-2200	2200-2300	2300-2400
Gulmandi	73.1	76.1	80.5	84.2	84.3	79.9
City Chowk	66.4	68.4	70.2	70.2	65.5	63.5
Kranti Chowk	73.9	73.2	73.3	72.3	71.5	70.0
CIDCO Residential	69.7	67.9	66.6	66.4	58.7	52.3
Usmanpura	66.8	64.9	63.6	62.4	60.4	57.5

Table 6(e): Results as on 14th September 2008

Location	1800-1900	1900-2000	2000-2100	2100-2200	2200-2300	2300-2400
Gulmandi	94.5	92.3	93.7	99.5	94.2	90.3
City Chowk	88.5	88.7	88.9	93.4	94.3	91.7
Kranti Chowk	74.4	79.4	75.0	77.9	69.7	67.3
CIDCO Residential	71.6	67.4	64.6	61.4	59.2	53.6
Usmanpura	66.9	69.7	69.2	62.9	60.3	56.4



vii) Nagpur

Table 7(a): Results as on 10th September 2008

Location	1800-1900	1900-2000	2000-2100	2100-2200	2200-2300	2300-2400
Cotton Market	73.7	76.1	78.8	79.3	71.5	74.8
Gandhi Putla	75.7	79.6	80.9	77.4	77.9	76.4
Golibar Chouk	76.6	77.5	76.7	74.4	70.9	67.2
Reshimbag	73.6	72.9	79.6	85.8	74.2	66.7
Abhayankar Nagar	71.4	71.5	72.6	72.3	63.8	65.9

Table 7(b): Results as on 11th September 2008

Location	1800-1900	1900-2000	2000-2100	2100-2200	2200-2300	2300-2400
Cotton Market	76.0	76.7	78.1	80.0	77.8	75.9
Gandhi Putla	75.3	79.3	81.7	81.2	78.7	74.6
Golibar Chouk	76.4	77.2	75.1	74.4	77.4	66.5
Reshimbag	82.5	83.4	82.6	77.7	76.2	71.0
Abhayankar Nagar	73.7	73.2	74.7	74.4	67.5	65.9

Table 7(c): Results as on 12th September 2008

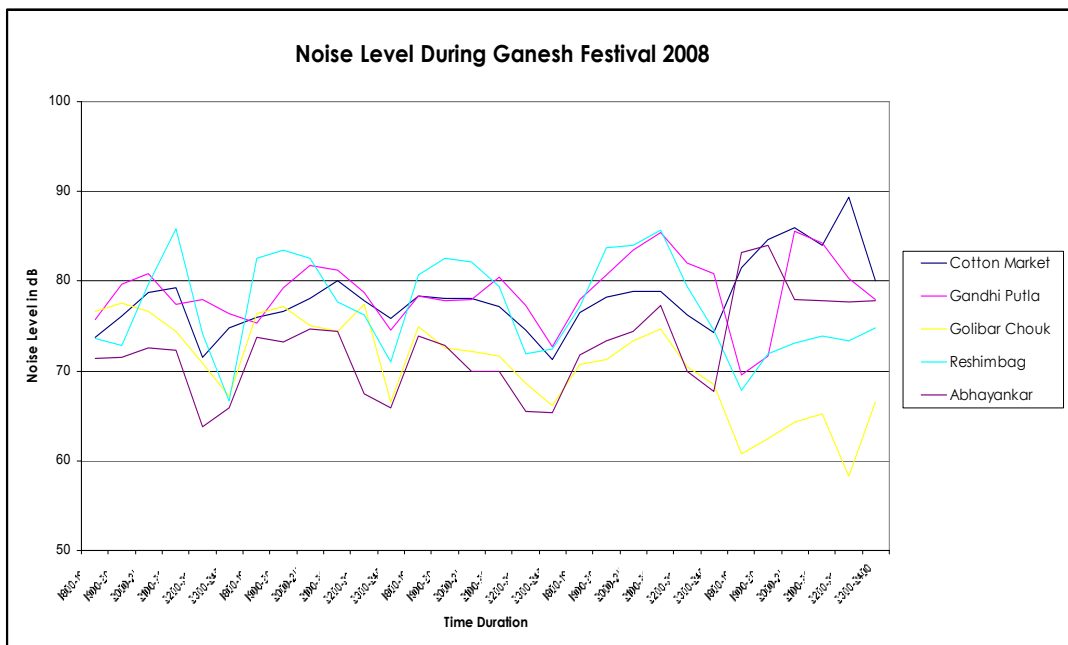
Location	1800-1900	1900-2000	2000-2100	2100-2200	2200-2300	2300-2400
Cotton Market	78.4	78.1	78.1	77.2	74.5	71.2
Gandhi Putla	78.4	77.8	78.0	80.4	77.3	72.7
Golibar Chouk	75.0	72.6	72.2	71.7	68.6	66.1
Reshimbag	80.7	82.5	82.1	79.4	71.9	72.4
Abhayankar Nagar	73.9	72.8	69.9	69.9	65.5	65.4

Table 7(d): Results as on 13th September 2008

Location	1800-1900	1900-2000	2000-2100	2100-2200	2200-2300	2300-2400
Cotton Market	76.5	78.2	78.9	78.9	76.2	74.3
Gandhi Putla	77.9	80.7	83.5	85.4	82.0	80.8
Golibar Chouk	70.8	71.3	73.3	74.7	70.5	68.5
Reshimbag	77.2	83.7	84.0	85.7	79.4	74.5
Abhayankar Nagar	71.8	73.3	74.4	77.3	70.0	67.7

Table 7(e): Results as on 14th September 2008

Location	1800-1900	1900-2000	2000-2100	2100-2200	2200-2300	2300-2400
Cotton Market	81.5	84.6	85.9	84.0	89.4	80.0
Gandhi Putla	69.6	71.6	85.5	84.3	80.3	78.0
Golibar Chouk	60.7	62.5	64.3	65.2	58.3	66.5
Reshimbag	67.8	71.9	73.1	73.9	73.3	74.8
Abhayankar Nagar	83.2	84.0	77.9	77.8	77.7	77.8



viii) Kalyan

Table 8(a): Results as on 10th September 2008

Location	1800-1900	1900-2000	2000-2100	2100-2200	2200-2300	2300-2400
Bhiwandi	79.1	78.3	78.9	86.8	84.0	84.0
Shivaji Chawk	78.4	76.0	78.0	78.9	80.1	74.4
Ulhasnagar Station	64.8	69.1	67.7	70.1	73.3	68.8

Table 8(b): Results as on 11th September 2008

Location	1800-1900	1900-2000	2000-2100	2100-2200	2200-2300	2300-2400
Bhiwandi	75.0	71.7	75.6	87.2	81.0	59.6
Shivaji Chawk	74.1	80.0	79.9	79.7	79.8	79.8
Ulhasnagar Station	67.4	67.0	64.8	65.2	64.9	68.1

Table 8(c): Results as on 12th September 2008

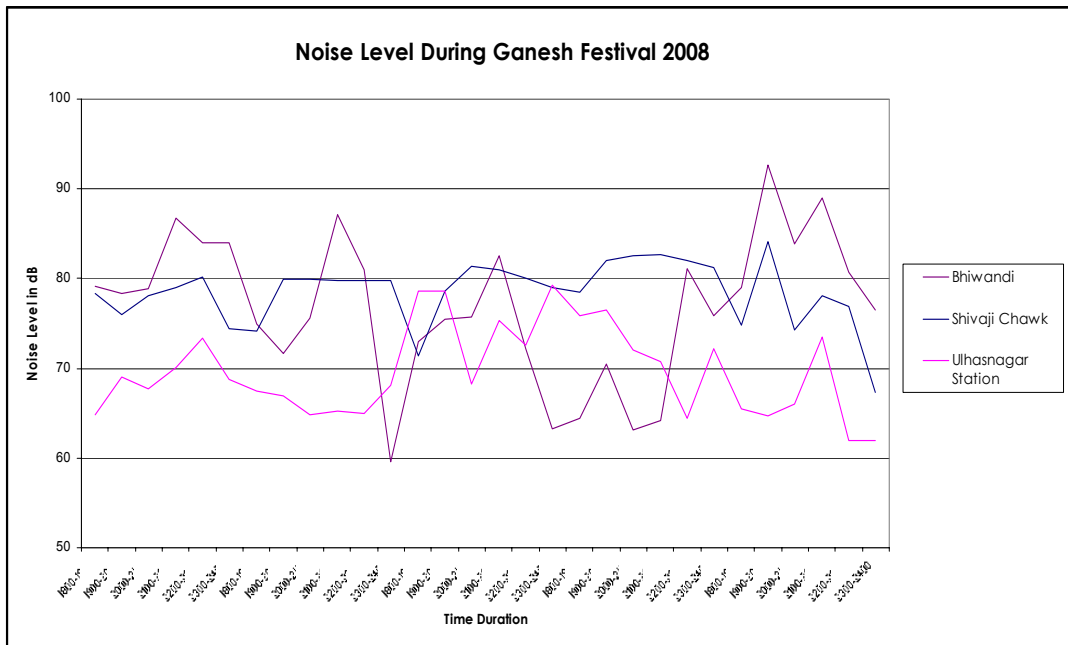
Location	1800-1900	1900-2000	2000-2100	2100-2200	2200-2300	2300-2400
Bhiwandi	73.0	75.5	75.7	82.5	72.2	63.3
Shivaji Chawk	71.3	78.6	81.4	80.9	80.1	79.0
Ulhasnagar Station	78.6	78.6	68.2	75.4	72.5	79.3

Table 8(d): Results as on 13th September 2008

Location	1800-1900	1900-2000	2000-2100	2100-2200	2200-2300	2300-2400
Bhiwandi	64.4	70.4	63.2	64.2	81.2	75.9
Shivaji Chawk	78.5	82.0	82.6	82.6	82.0	81.2
Ulhasnagar Station	75.9	76.6	72.1	70.7	64.5	72.2

Table 8(e): Results as on 14th September 2008

Location	1800-1900	1900-2000	2000-2100	2100-2200	2200-2300	2300-2400
Bhiwandi	79.0	92.7	83.8	89.0	80.7	76.5
Shivaji Chawk	74.8	84.2	74.3	78.1	76.9	67.4
Ulhasnagar Station	65.6	64.7	66.0	73.5	61.9	62.0



ix) Amravati

Table 9(a): Results as on 10th September 2008

Location	1800-1900	1900-2000	2000-2100	2100-2200	2200-2300	2300-2400
Rajkamal Square	74.5	73.9	73.7	72.8	67.4	66.6
Rajapeth	72.1	70.7	72.7	67.2	62.7	59.5
Irvin Hospital Square	63.1	65.8	63.0	60.5	59.0	51.7

Table 9(b): Results as on 11th September 2008

Location	1800-1900	1900-2000	2000-2100	2100-2200	2200-2300	2300-2400
Rajkamal Square	75.0	78.4	75.8	73.8	74.5	71.7
Rajapeth	72.8	72.9	71.8	69.4	66.9	63.6
Irvin Hospital Square	72.3	70.7	73.6	69.8	66.2	57.3

Table 9(c): Results as on 12th September 2008

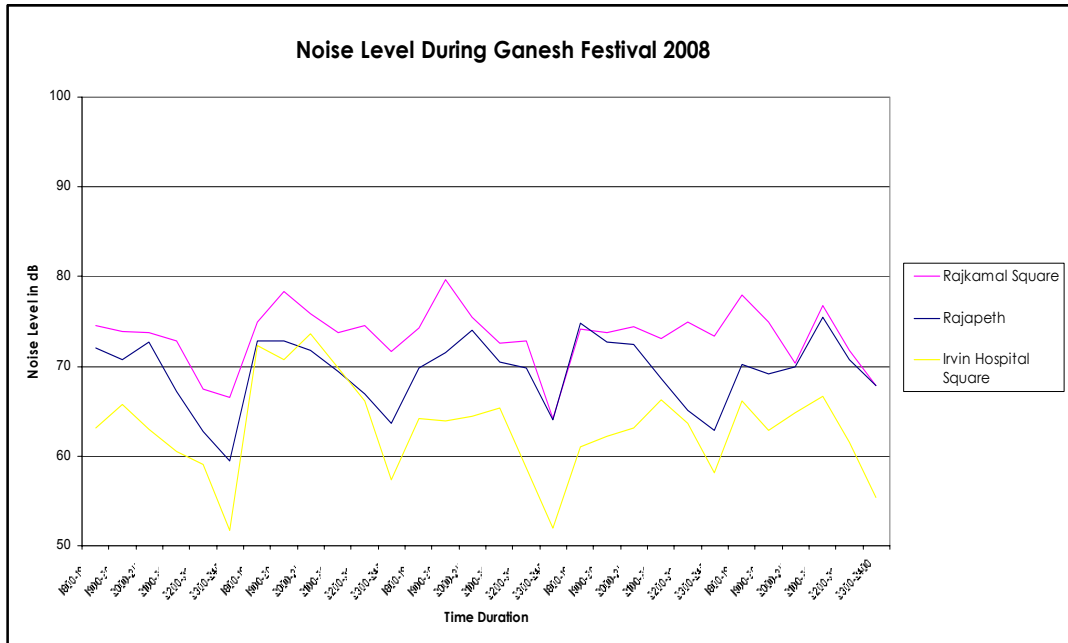
Location	1800-1900	1900-2000	2000-2100	2100-2200	2200-2300	2300-2400
Rajkamal Square	74.3	79.7	75.4	72.6	72.8	64.2
Rajapeth	69.8	71.5	74.0	70.5	69.8	64.1
Irvin Hospital Square	64.2	63.9	64.4	65.3	58.7	52.0

Table 9(d): Results as on 13th September 2008

Location	1800-1900	1900-2000	2000-2100	2100-2200	2200-2300	2300-2400
Rajkamal Square	74.1	73.8	74.4	73.1	74.9	73.3
Rajapeth	74.8	72.7	72.4	68.7	65.1	62.9
Irvin Hospital Square	61.0	62.2	63.1	66.3	63.7	58.2

Table 9(e): Results as on 14th September 2008

Location	1800-1900	1900-2000	2000-2100	2100-2200	2200-2300	2300-2400
Rajkamal Square	78.0	74.9	70.4	76.8	71.8	67.9
Rajapeth	70.3	69.1	70.0	75.5	70.7	67.9
Irvin Hospital Square	66.2	62.8	64.8	66.7	61.5	55.4



x) Jalgaon

Table 10(a): Results as on 10th September 2008

Location	1800-1900	1900-2000	2000-2100	2100-2200	2200-2300	2300-2400
Subhash Chowk	74.0	73.0	78.0	70.0	67.0	66.0
Shashtri Tower Chowk	78.0	72.0	69.0	68.0	65.0	65.0
Shanipeth Police Station	73.0	70.0	68.0	68.0	65.0	62.0

Table 10(b): Results as on 11th September 2008

Location	1800-1900	1900-2000	2000-2100	2100-2200	2200-2300	2300-2400
Subhash Chowk	77.0	76.0	77.0	79.0	68.0	67.0
Shashtri Tower Chowk	75.0	77.0	77.0	76.0	70.0	67.0
Shanipeth Police Station	72.0	71.0	68.0	68.0	65.0	62.0

Table 10(c): Results as on 12th September 2008

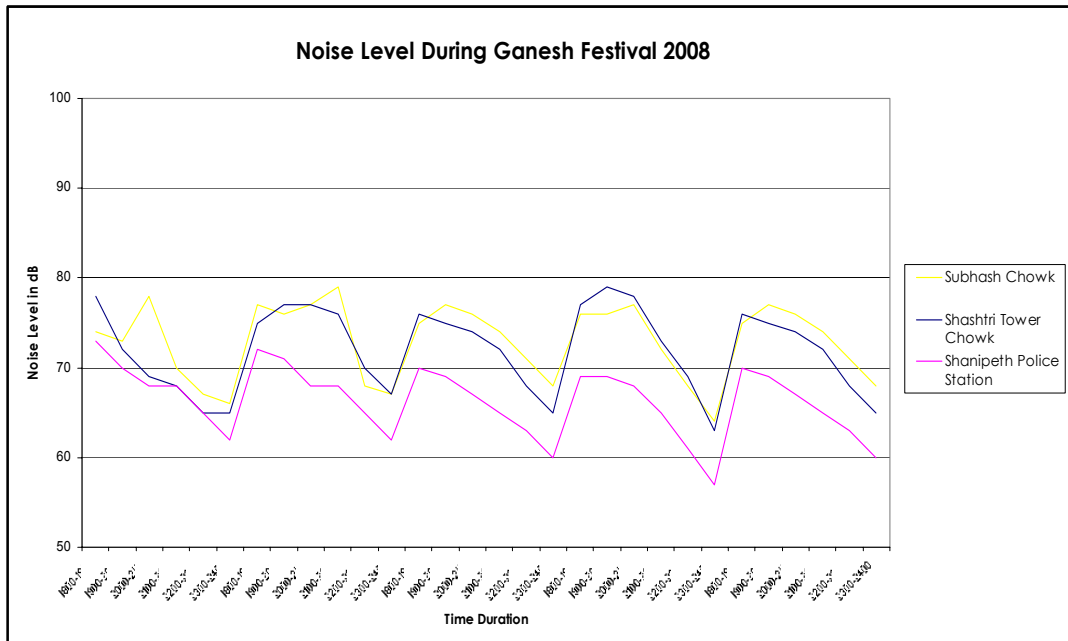
Location	1800-1900	1900-2000	2000-2100	2100-2200	2200-2300	2300-2400
Subhash Chowk	75.0	77.0	76.0	74.0	71.0	68.0
Shashtri Tower Chowk	76.0	75.0	74.0	72.0	68.0	65.0
Shanipeth Police Station	70.0	69.0	67.0	65.0	63.0	60.0

Table 10(d): Results as on 13th September 2008

Location	1800-1900	1900-2000	2000-2100	2100-2200	2200-2300	2300-2400
Subhash Chowk	76.0	76.0	77.0	72.0	68.0	64.0
Shashtri Tower Chowk	77.0	79.0	78.0	73.0	69.0	63.0
Shanipeth Police Station	69.0	69.0	68.0	65.0	61.0	57.0

Table 10(e): Results as on 14th September 2008

Location	1800-1900	1900-2000	2000-2100	2100-2200	2200-2300	2300-2400
Subhash Chowk	75.0	77.0	76.0	74.0	71.0	68.0
Shashtri Tower Chowk	76.0	75.0	74.0	72.0	68.0	65.0
Shanipeth Police Station	70.0	69.0	67.0	65.0	63.0	60.0



xi) Kolhapur

Table 11(a): Results as on 10th September 2008

Location	1800-1900	1900-2000	2000-2100	2100-2200	2200-2300	2300-2400
Rajaram Puri	72.0	72.0	71.0	72.0	71.0	68.0
Laxmi Puri	80.0	72.0	75.0	72.0	68.0	65.0
Desara Chowk	76.0	73.0	71.0	69.0	68.0	65.0

Table 11(b): Results as on 11th September 2008

Location	1800-1900	1900-2000	2000-2100	2100-2200	2200-2300	2300-2400
Rajaram Puri	72.0	72.0	71.0	73.0	73.0	69.0
Laxmi Puri	77.0	78.0	79.0	73.0	68.0	67.0
Desara Chowk	74.0	76.0	73.0	71.0	71.0	67.0

Table 11(c): Results as on 12th September 2008

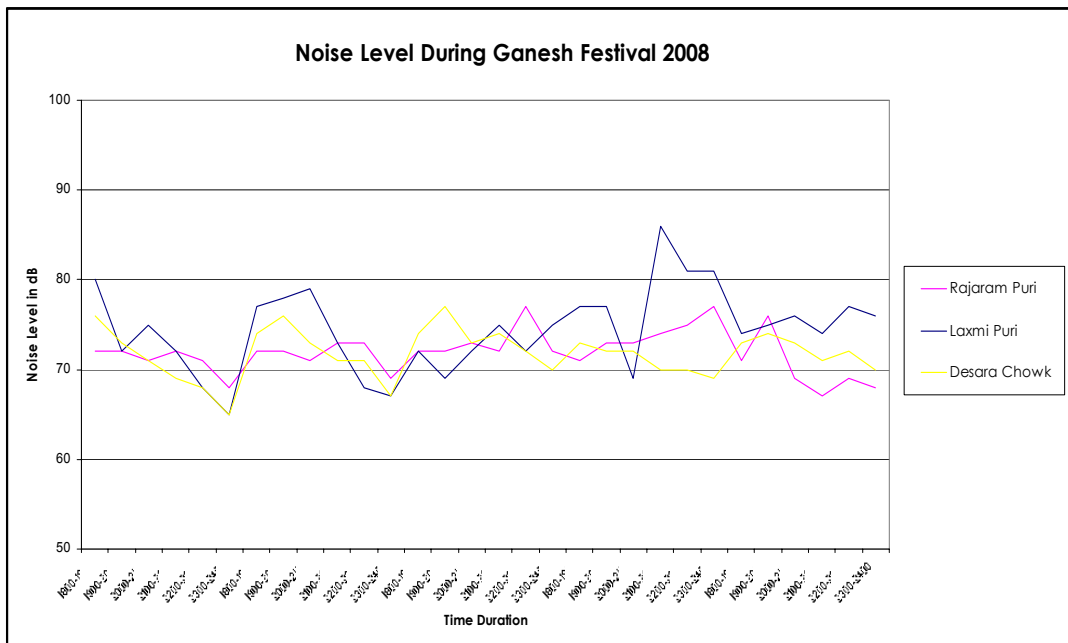
Location	1800-1900	1900-2000	2000-2100	2100-2200	2200-2300	2300-2400
Rajaram Puri	72.0	72.0	73.0	72.0	77.0	72.0
Laxmi Puri	72.0	69.0	72.0	75.0	72.0	75.0
Desara Chowk	74.0	77.0	73.0	74.0	72.0	70.0

Table 11(d): Results as on 13th September 2008

Location	1800-1900	1900-2000	2000-2100	2100-2200	2200-2300	2300-2400
Rajaram Puri	71.0	73.0	73.0	74.0	75.0	77.0
Laxmi Puri	77.0	77.0	69.0	86.0	81.0	81.0
Desara Chowk	73.0	72.0	72.0	70.0	70.0	69.0

Table 11(e): Results as on 14th September 2008

Location	1800-1900	1900-2000	2000-2100	2100-2200	2200-2300	2300-2400
Rajaram Puri	71.0	76.0	69.0	67.0	69.0	68.0
Laxmi Puri	74.0	75.0	76.0	74.0	77.0	76.0
Desara Chowk	73.0	74.0	73.0	71.0	72.0	70.0



xii) Satara

Table 12(a): Results as on 10th September 2008

Location	1800-1900	1900-2000	2000-2100	2100-2200	2200-2300	2300-2400
Powai Naka	77.0	79.0	80.0	79.0	71.0	66.0
Moti Chowk	73.0	75.0	73.0	75.0	73.0	67.0
Rajwada	78.0	77.0	77.0	72.0	74.0	69.0

Table 12(b): Results as on 11th September 2008

Location	1800-1900	1900-2000	2000-2100	2100-2200	2200-2300	2300-2400
Powai Naka	76.0	72.0	72.0	75.0	72.0	70.0
Moti Chowk	79.0	81.0	79.0	80.0	79.0	77.0
Rajwada	78.0	78.0	75.0	91.0	79.0	76.0

Table 12(c): Results as on 12th September 2008

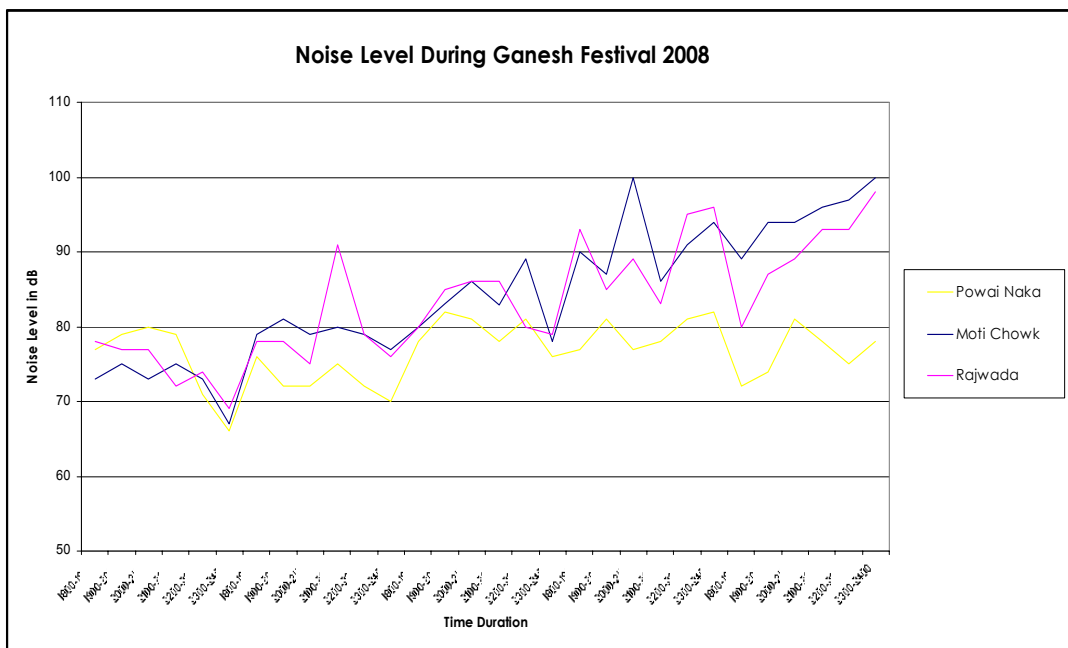
Location	1800-1900	1900-2000	2000-2100	2100-2200	2200-2300	2300-2400
Powai Naka	78.0	82.0	81.0	78.0	81.0	76.0
Moti Chowk	80.0	83.0	86.0	83.0	89.0	78.0
Rajwada	80.0	85.0	86.0	86.0	80.0	79.0

Table 12(d): Results as on 13th September 2008

Location	1800-1900	1900-2000	2000-2100	2100-2200	2200-2300	2300-2400
Powai Naka	77.0	81.0	77.0	78.0	81.0	82.0
Moti Chowk	90.0	87.0	100.0	86.0	91.0	94.0
Rajwada	93.0	85.0	89.0	83.0	95.0	96.0

Table 12(e): Results as on 14th September 2008

Location	1800-1900	1900-2000	2000-2100	2100-2200	2200-2300	2300-2400
Powai Naka	72.0	74.0	81.0	78.0	75.0	78.0
Moti Chowk	89.0	94.0	94.0	96.0	97.0	100.0
Rajwada	80.0	87.0	89.0	93.0	93.0	98.0



8. **Conclusion:** It is observed from the results that the noise levels were exceeding the permissible limit during the Ganesh Festival from September 10 to 14, 2008 in all the cities. In spite of legal standards in place and efforts of the regulatory agencies, the noise levels could not be controlled under the permissible limit.

When compared with the noise levels observed during the Ganesh Festival of last year, noise levels were ranging from 50.2 dB to 107 dB. The detailed comparison of noise level in various cities in Maharashtra are as follows:

- In **Mumbai**, 25 locations were monitored and the sound level during monitoring in 2008 were ranging between 50.2 dBA to 91.3 dBA. In 2007, the noise level ranged between 63.4 dBA to 102.7 dBA.
- In **Navi Mumbai**, 5 locations were monitored and the sound level during monitoring in 2008 were ranging between 51.3 dBA to 95.8 dBA. In 2007, the noise level ranged between 85.9 dBA to 100.6 dBA.
- In **Thane**, 5 locations were monitored and the sound level during monitoring in 2008 were ranging between 56 dBA to 96.5 dBA. In 2007, the noise level ranged between 59.2 dBA to 92.4 dBA.
- In **Pune**, 20 locations were monitored and the sound level during monitoring in 2008 were ranging between 62 dBA to 107 dBA. In 2007, the noise level ranged between 56.8 dBA to 99.3 dBA.
- In **Nashik**, 5 locations were monitored and the sound level during monitoring in 2008 were ranging between 41.9 dBA to 99.8 dBA. In 2007, the noise level ranged between 40.2 dBA to 89.3 dBA.
- In **Aurangabad**, 5 locations were monitored and the sound level during monitoring in 2008 were ranging between 51.3 dBA to 99.5 dBA. In 2007, the noise level ranged between 65.2 dBA to 114.1 dBA.
- In **Nagpur**, 5 locations were monitored and the sound level during monitoring in 2008 were ranging between 60.7 dBA to 85.9 dBA. In 2007, the noise level ranged between 62.2 dBA to 98.3 dBA.
- In **Kalyan**, 3 locations were monitored and the sound level during monitoring in 2008 were ranging between 59.6 dBA to 92.7 dBA. In 2007, the noise level ranged between 65.4 dBA to 103.8 dBA.
- In **Amravati**, 3 locations were monitored and the sound level during monitoring in 2008 were ranging between 59 dBA to 79.7 dBA. In 2007, the noise level ranged between 52.6 dBA to 93.6 dBA.
- In **Jalgaon**, 3 locations were monitored and the sound level during monitoring in 2008 were ranging between 60.0 dBA to 79.0 dBA. In 2007, the noise level ranged between 54.0 dBA to 102.9 dBA.
- In **Kohlapur**, 3 locations were monitored and the sound level during monitoring in 2008 were ranging between 65.0 dBA to 86.0 dBA. In 2007, the noise level ranged between 56.9 dBA to 105.4 dBA.
- In **Satara**, 3 locations were monitored and the sound level during monitoring in 2008 were ranging between 66.0 dBA to 100.0 dBA. In 2007, the noise level ranged between 62.5 dBA to 96.7 dBA.

It is observed that, there is significant change in noise levels in all the cities. There was a reduction of Noise this year in all the cities as compared to the previous years.

Increasing awareness amongst masses and enforcement has resulted in reduction of noise levels this season.

9. Glimpse of the event (Photographs)



Mr. Lohalkar SRO, MPCB Thane with students at Raila Devi Lake.



Rajendra Kurhade at Balmitra Kala Mandal, Vikhroli.



Chandrakant Utthekar at Sahyadri Krida Mandal Chembur West.



Mr. Wenkhede SRO-I Nagpur along with our team at location- Cotton Market Square.



Mr. A.P. Saffale FO SRO I Nagpur along with our team at location- Gandhi Putla Square.



Mr. V.M. Motghare RO Nagpur along with our team at location- Reshimbag.



Yogesh Dhekale (student) at Amar Mandal, Tilak Nagar, Ghatkopar.



Mr. Gadhave SRO Nagpur along with our team at location- Golibar Chawnk.



Deepak Gurav at Sai Ganesh Sadan, Dadar West.



Mrs. Deshpande FO RO Nagpur along with our team at location- Abhyankar Nagar.



Vikas Yadav at Sarvanik Ganesh Utav Mandal, Parel.



Mr. Saffale FO SRO I Nagpur along with our team at location- Gandhi Sagar Lake.



Mrs. Deshpande FO RO Nagpur along with our team at Sonegaon Lake.



Prasanjit Pawar and Manoj Salvi (students) at Jamli Naka- Thane.



Mr. Wankhede SRO I Nagpur along with our team at location- Futala Lake.



Rajesh Jamdar at Girgaon Chowpati.



Mr. C.D. Patil FO Amravati along with our team at location- Rajapeth.



Sachin Jambe at Chinchpokali West.



Mr. C.D. Patil FO Amravati along with our team at Location- Irvin Hospital Square.



Mr. Kantole FO RO Nagpur along with our team at Location- Sakkardara Lake.



Sanjay Gupta at Sarvanik Ganesh Utsav Mandal- Grant Road.



Bhupendra Shinde and Rahul Chikne at Vartak Nagar.