

Monitoring of Noise Pollution during Ganesh Festival, 2006



MAHARASHTRA POLLUTION CONTROL BOARD

Kalpataru Point, Sion (E), Mumbai – 400 022.

E-mail : mpcb@mah.nic.in

Web site : <http://mpcb.mah.nic.in>

September 28, 2006

FOREWORD

This report is based on the measurement of the noise level by the Board in 12 cities / towns and at 160 locations during the Ganesh festival, August – September, 2006. It was observed that noise levels were exceeding the permissible limits in all cities and almost at all locations.

Dr. D.B.Boralkar
Member Secretary
September 28, 2006

Contents

Sr. No.	Title	Page No
1.0	Introduction	1
2.0	Noise Pollution and its effect on Human Health	1
3.0	Noise level measurement and Noise Pollution Standards	2
4.0	Methodology of Survey	3
5.0	Noise levels in major cities	4
5.1	Mumbai	4
5.2	Thane	6
5.3	Pune	8
5.4	Nashik	13
5.5	Ahmednagar	15
5.6	Satara	19
5.7	Kalyan – Dombivali	21
5.8	Navi Mumbai	22
5.9	Amaravati	23
5.10	Aurangabad	24
5.11	Kolhapur	25
5.12	Raigad	28
6.0	Conclusion	30

Maharashtra Pollution Control Board

Monitoring of Noise Pollution during Ganesh Festival, 2006

1. Introduction

Ganesh festival is one of the main festivals in Maharashtra. This festival is also celebrated as community festival. Festival duration is of 10 days. After 10 days, Ganesh idols are immersed in water bodies. Large number of people participate in the festival and immersion procession on the last day. Vocal music and musical instruments during the festival causes high levels of noise. In general, ambient levels of noise poll increase considerably.

In order to access the situation of noise levels in various cities in the state of Maharashtra, Board has carried out the survey for 5 days during Ganesh festival in the month of Aug 27- Sept 7, 2006. Following is the report.

2. Noise Pollution and Its Effect on Human Health

Noise pollution is undesirable sound. One measure of noise pollution is the danger it poses to health. Noise causes stress, can be the cause of illness and create annoyance. Therefore, any form of noise can be considered pollution if it causes annoyance, sleeplessness, fright, or any other stress reaction.

Noise is transient; once the pollution stops, the environment is free of it. This is not the case for chemicals, sewage, and other pollutants introduced into the air, soil, or water.

Other forms of pollution can be measured, and scientists can estimate how much material can be introduced into the environment before harm is done. We can measure individual sounds that may damage human hearing, but it is difficult to monitor cumulative exposure to noise.

The response to noise pollution itself is highly subjective. To some people the roar of an engine is satisfying or thrilling; to others it is an annoyance. Loud music may be enjoyable or a torment, depending on the listener and the circumstances

3. Noise Level Measurement and Noise Pollution Standards

Noise is often measured in decibels (dBA). A symbol indicates a measurement of a logarithmic scale. In each case, the actual measurement 'a' is compared to a fixed reference level 'r' and the "decibel" value is defined to be $10 \log_{10} (a/r)$. 'A' weighing filters out lower frequencies very severely. Fast responses closely match to the simulations of Human ear sensitivity. Fast response (125 to 200 milli-second) was selected to measure noise levels. The human response to Noise depends upon the frequency of the sound, the type of noise (continuous, intermittent or impulsive) and the time (day or night) it occurs.

Noise has been recognised as ambient air pollutant. Standards in this regard are laid down under The Environment (Protection) Act, 1986 (and rules made there under) and under the Model Rules of the Factories Act, 1948 for occupational health and safety purposes.

The Central Pollution Control Board constituted a National Committee of Experts on Noise Pollution Control. The Committee recommended noise standards for ambient air and for automobiles, domestic appliances and constructions equipment, which were later notified under The Environment (Protection) Act, 1986 as given below:

Area Code	Category of Area	Limits in dB(A) , Leq	
		Day time	Night time
A	Industrial area	75	70
B	Commercial area	65	55
C	Residential Area	55	45
D	Silence Zone	50	40

Note:

1. Day time is reckoned in between 6 a.m and 9 p.m.
2. Night time is reckoned in between 9 p.m and 6 a.m.
3. Silence zone is referred as areas up to 100 meters around such premises as hospitals, educational institutions and courts. The Silence zones are to be declared by the Competent Authority.
4. Use of vehicular horns, loudspeakers and bursting of crackers shall be banned in these zones.
5. Mixed categories of areas should be declared as one of the four above mentioned categories by the Competent Authority and the corresponding standards shall apply.

4. Methodology of the Survey

The noise pollution monitoring survey was carried out during August 27 and September 7, 2006. Noise level measurement was done during 19.00 hrs to 24.00 hrs. The monitoring was carried out at distances of 50 meters and 100 meters around Ganesh pandals/ source of noise pollution. The frequency of the monitoring was twice in a day, for a minimum period of 30 minutes. The noise levels were also recorded at few selected places durin 19.00 to 24.00 hrs where festival procession was not there. This was done for comparison of noise levels in festival area and outside/ far away places.

Following are the names of cities and no of stations in each city covered during the survey:

Sr. No.	Region	No. of Stations
1.	Mumbai	8
2.	Navi Mumbai	5
3.	Thane	9
4.	Kalyan	3
5.	Pune and Pimpri Chinchwad	27
6.	Nashik	19
7.	Aurangabad	7
8.	Ahmednager	21
9.	Amravati	3
10.	Kolhapur	9
11.	Raigad	16
12.	Satara	33
	Total no. of stations	160

5. Noise Levels in Major cities

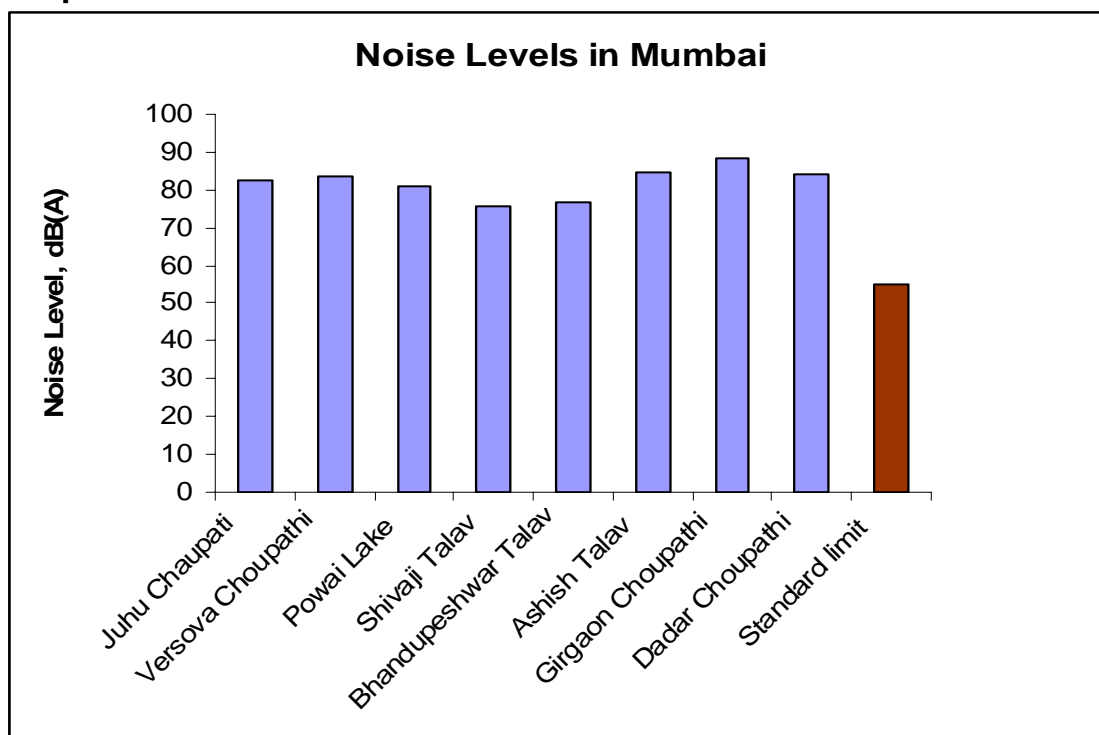
5.1 Mumbai : In Mumbai 8 locations were monitored for noise pollution on September 6, 2006 from 18.00 to 21.00 hrs. The noise levels at 8 locations are shown in **Table 1**. The comparative scenario of average values in various locations is shown in **Graph 1**. It is observed that minimum noise level in Mumbai was ranging from 52.2 to 72 dBA. Maximum levels ranges from 93 to 97.8 dBA.

Table 1 : Noise Levels in Mumbai

Sr. No.	Location	Date	Time (hrs)		Noise Level (dBA)		
			From	To	Min	Max	Avg
1	Juhu Chaupati	06.09.06	19.00	20.00	71	93	82.8
2	Versova Choupathi	06.09.06	19.00	20.00	72	93	83.7
3	Powai Lake	06.09.06	17.00	18.00	70	97	81
4	Shivaji Talav	06.09.06	18.00	19.00	58.8	95.6	75.8
5	Bhandupeshwar Talav	06.09.06	19.00	20.00	52.2	92.5	76.7
6	Ashish Talav	06.09.06	20.00	21.00	52.8	97.8	84.4
7	Girgaon Choupathi	06.09.06	18.00	19.00	68	97	88.2
8	Dadar Choupathi	06.09.06	19.00	20.00	70	93.1	84.2

Average noise levels in all the locations of Mumbai were above the permissible limit prescribed under The Environment (Protection) Act, 1986.

Graph 1 : Noise levels in Mumbai

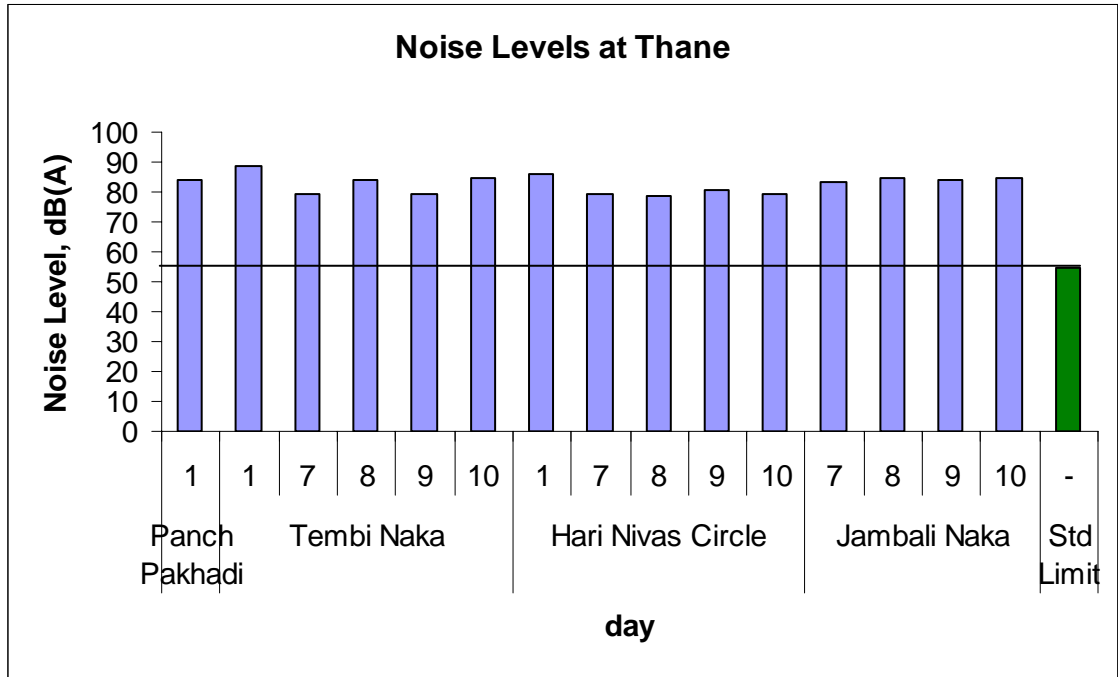


5.2 Thane : In Thane 9 locations were monitored for noise pollution during August 27, 2006 - September 6, 2006 from 18.00 to 22.25 hrs. The noise levels at 9 locations are shown in **Table 2**. The comparative scenario of average values in various locations is shown in **Graph 2A and Graph 2B**. It is observed that minimum noise level was ranging from 70.1 to 80 dBA and maximum levels was ranging from 78.5 to 88.8 dBA.

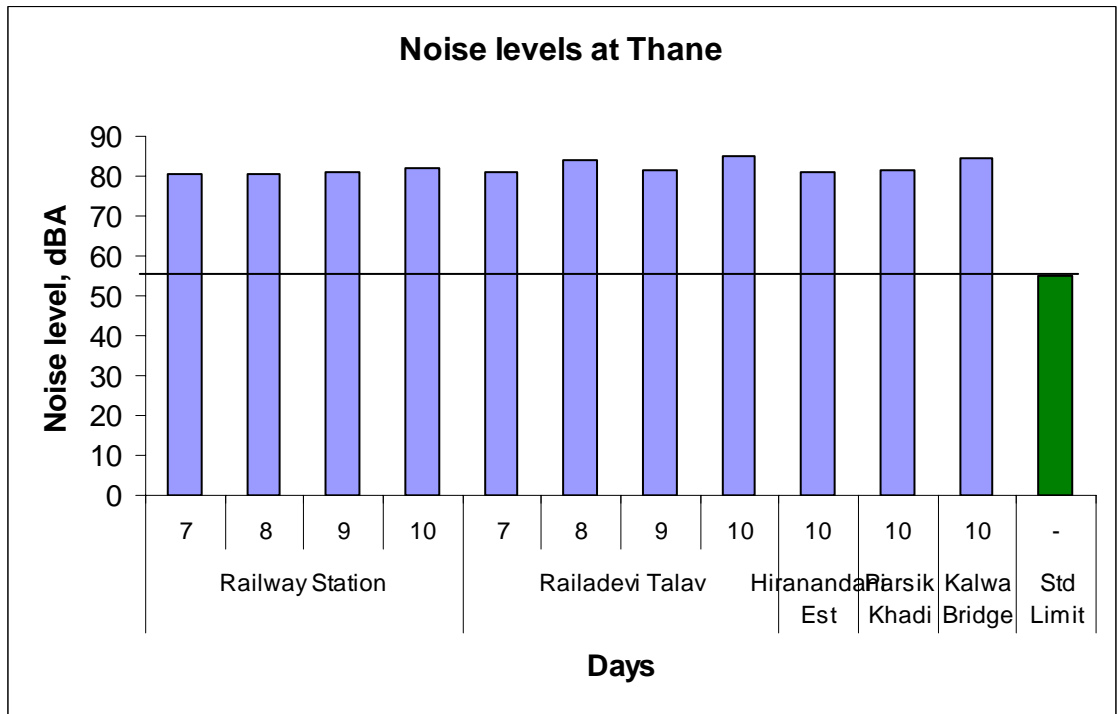
Table 2 : Noise Levels at Thane

Sr. No.	Location	Date	Time (hrs)		Noise Level (dB A)		
			From	To	Min	Max	Avg
1	Panch Pakhadi	27.08.06	18.00	19.00	79	90	84
2	Tembi Naka	27.08.06	19.00	20.00	80	96	88.8
		03.09.06	19.05	22.25	72.9	86.1	79.4
		04.09.06	19.05	22.25	77.2	91.1	83.9
		05.09.06	19.05	22.25	72.3	87.4	79.4
		06.09.06	19.05	22.25	74.8	92.2	84.8
3	Hari Nivas Circle	27.08.06	20.00	21.00	80	92	85.8
		03.09.06	19.05	22.25	71.5	86.5	79.2
		04.09.06	19.05	22.25	70.1	86.5	78.5
		05.09.06	19.05	22.25	71.9	88	80.9
		06.09.06	19.05	22.25	71.6	86.4	79.1
4	Jambali Naka	03.09.06	19.05	22.25	76.9	92.8	83.5
		04.09.06	19.05	22.25	79.3	91.8	84.5
		05.09.06	19.05	22.25	75.3	91.3	83.7
		06.09.06	19.05	22.25	77.3	91.2	84.6
5	Railway Station	03.09.06	19.05	22.25	72.3	87.5	80.3
		04.09.06	19.05	22.25	70.8	88.6	80.5
		05.09.06	19.05	22.25	71.1	89.5	80.9
		06.09.06	19.05	22.25	72.8	89.3	81.8
6	Railadevi Talav	03.09.06	19.05	22.25	73.8	89.2	80.9
		04.09.06	19.05	22.25	77.7	90.7	83.8
		05.09.06	19.05	22.25	72.4	91.3	81.6
		06.09.06	19.05	22.25	77.5	91.8	84.9
7	Hiranandani Estate	06.09.06	19.05	22.25	73.9	88	81.1
8	Parsik Khadi	06.09.06	19.05	22.25	73	90.6	81.6
9	Kalwa Bridge	06.09.06	19.05	22.25	76.8	91.4	84.5

Graph 2A : Noise levels at Thane



Graph 2B : Noise levels at Thane



5.3 Pune : In Pune city 6 locations were monitored for noise pollution on August 26, 2006 to September 6, 2006 from 19.00 to 23.00 hrs. The noise levels at various locations are shown in **Table 3A**. It is observed that minimum noise level was ranging from 55 to 69 dBA and maximum level was ranging from 64 to 83 dBA. Average noise levels during festival were above permissible limits.

Noise levels measured during the procession are presented in **Table 3B**. It is seen that the noise levels were exceeding the limits at all places and all times during the measurement. Noise levels at Pimpri-Chinchwad Municipal Corporation area are presented in **Table 3C**. There levels are less than that of Pune Municipal Corporation Area.

Noise levels in Pune city were also monitored by MPCB in 2003, 2004 and 2005. Noise level range is similar to the last year results in most of the areas as shown in **Graph 3**.

Table 3A : Noise Levels at Pune

Sr. No.	Location	Date	Time (hrs)		Noise Level (dB A)		
			From	To	Min	Max	Avg
1	Dagdushet	26.08.06	18	23.55	55.6	72.2	64
	Ganapati Pune	27.08.06	18.15	23.5	59.5	76.4	67
	Cantonment Board	28.08.06	18	23.35	59.4	75.6	67.3
		29.08.06	18.15	23.5	62.1	78.6	70.2
		30.08.06	18.15	23.5	58.6	75.6	66.3
		31.08.06	18.15	23.5	57.9	68.4	62.1
		01.09.06	18.15	23.5	58.2	64.7	61.1
		02.09.06	18	23.55	55.9	68.9	62.3
		03.09.06	18.15	23.5	54.7	65.7	60.1
		04.09.06	18	23.35	58.8	68.4	63.2
		05.09.06	18.15	23.5	61.2	82.3	69.2
		06.09.06	18	23.35	62.1	83.1	70

Sr. No.	Location	Date	Time (hrs)		Noise Level (dB A)		
			From	To	Min	Max	Avg
2	M.G.Road, Pune Cantonment Board	26.08.06	18.15	23.45	58.8	75.4	66.9
		27.08.06	18.4	23.35	60.1	79.8	68.9
		28.08.06	18.3	23.25	62.2	78.2	69.5
		29.08.06	18.4	23.25	60.6	71.2	66.1
		30.08.06	18.4	23.35	59.3	78.6	67.6
		31.08.06	18.4	23.35	58	63.6	60.4
		01.09.06	18.4	23.35	57.9	70.8	62.9
		02.09.06	18.15	23.45	57.6	69.7	63.6
		03.09.06	18.4	23.35	56.2	64.7	60.8
		04.09.06	18.3	23.25	59.2	70.1	64.7
		05.09.06	18.4	23.35	59.2	70.1	64.6
		06.09.06	18.3	23.25	61.3	80.4	68.3
		3	Mitra Sagar Mandal, Kadki Cantonment Board	26.08.06	19.4	23.3	57.3
27.08.06	20			23.15	57.6	75.2	65.5
28.08.06	19.45			23.15	61.2	76.8	67.7
29.08.06	20			23.15	65.5	82.1	72.6
30.08.06	20			23.15	56.3	76.3	65.9
31.08.06	20			23.15	59.1	69.9	63.6
01.09.06	20			23.15	58.4	65.8	61.9
02.09.06	19.4			23.3	56.5	71.4	64.3
03.09.06	20			23.15	58.4	72.5	64.9
04.09.06	19.45			23.15	57.1	69.2	63.5
05.09.06	20			23.15	61.3	79.2	68.3
06.09.06	19.45			23.15	59.8	70.3	64.7
4	Nava Bazar Ganesh Utsav Trust, Kadki Cantonment Board			26.08.06	19.55	23.15	60.2
		27.08.06	20.3	23.05	61.3	78.6	68.7
		28.08.06	20	22.55	63.8	79	69.8
		29.08.06	20.3	23.05	61.3	77.6	68.9
		30.08.06	20.3	23.05	60.3	77.5	68.7
		31.08.06	20.3	23.05	63.1	71.9	66.7
		01.09.06	20.3	23.05	56.9	70.9	63.7
		02.09.06	19.55	23.15	59.3	75.3	66.5
		03.09.06	20.3	23.05	59.7	71.7	65.1
		04.09.06	20	22.55	57.4	71.3	64.5
		05.09.06	20.3	23.05	58.3	77.8	66.1
		06.09.06	20	22.55	58.9	69.5	62

Noise levels at Pune city were also measured from first day to 10th day in major areas. In Pune city a big procession of immersion on 10th day of all the public idols is a cultural event. The noise pollution at 8 major procession locations from 19.00 to 22 hrs was monitored and the results are shown in **Table 3B**. A comparative graphical representation is shown in Graph 3.

Table 3B : Noise Levels at major procession locations at Pune

Sr. No.	Place	Date	Time (Hrs)	Before 22.00		Time (Hrs)	After 22.00	
				Min,dBA	Max,dBA		Min,dBA	Max,dBA
1	Belbaugh Chowk	06.09.06	18.55 19.05	83.00	88.60	00.40 00.45	83.20	89.90
2	Ganpati Chowk	06.09.06	19.10 19.20	84.70	89.40	00.25 00.35	85.20	88.90
3	Nagarkar Talim Chowk	06.09.06	20.25 20.35	87.80	90.50	00.10 00.20	88.50	91.20
4	Kunte Chowk	06.09.06	20.40 20.50	80.10	85.10	00.00 00.05	83.90	85.70
5	Shagun Chowk	06.09.06	20.55 21.05	85.10	88.30	23.45 23.55	84.20	87.00
6	Alka Talkies	06.09.06	21.10 21.20	75.50	83.50	22.30 22.40	58.00	69.00
7	Holkar Chowk	06.09.06	21.25 21.35	88.40	90.20	22.15 22.25	88.40	91.40
8	Sambhaji Chowk	06.09.06	21.40 21.50	88.30	92.90	22.00 22.10	88.30	92.90

Graph 3 : Comparative Noise Levels on 10th day

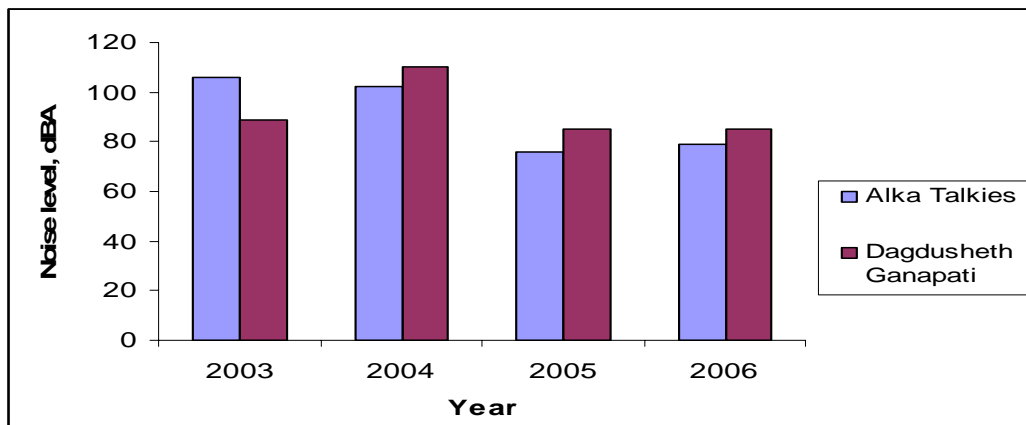


Table 3C : Noise Levels at Pimpri - Chinchwad

Sr. No.	Location	Date	Time (hrs)		Noise Level (dB A)			
			From	To	Min	Max	Avg	
1	Dapodi Chowk	26.08.06	19.1	23.55	53.2	64.3	59.4	
	Subhash Tarun	27.08.06	19.1	0.15	53.2	64.3	59.4	
	Mandal	28.08.06	18.35	0.1	55.6	76.3	65.5	
		29.08.06	19.1	0.15	53.2	64.3	59.4	
		30.08.06	19.1	0.15	56.3	74.5	64.4	
		31.08.06	19.05	0.2	55.6	75.2	64.9	
		01.09.06	19.15	0.2	54.2	74.9	64.9	
		02.09.06	19.1	0.15	55.8	76.8	65.1	
		03.09.06	19.2	0.25	54.9	78.5	66.4	
		04.09.06	19.1	0.15	51.8	76.9	64.7	
		05.09.06	18.5	0.2	50.6	74.8	62.7	
		06.09.06	18.3	0.25	51.7	78.7	65.1	
	2	Sangvi-Chatrapati	26.08.06	19.35	23.55	50.4	63.9	56.6
		Shivaji Ganesh	27.08.06	19.35	23.55	50.4	63.9	56.6
Mandal		28.08.06	18.54	23.4	57.4	74.9	66.1	
		29.08.06	19.35	23.55	50.4	63.9	56.6	
		30.08.06	19.35	23.54	61.5	77.3	68.5	
		31.08.06	19.25	0.05	57.4	76.3	66.3	
		01.09.06	19.3	0.05	52.3	75.3	64.3	
		02.09.06	19.35	23.55	53.7	74.4	65.3	
		03.09.06	19.4	0.1	54.5	79.2	67.7	
		04.09.06	19.35	23.55	55.9	78.3	66.4	
		05.09.06	19.15	23.55	54.4	76.1	65.3	
		06.09.06	18.5	0.05	57.3	79.5	67.7	
3		Kasarwadi Sri Krishna Ganesh	26.08.06	19.55	23.35	53.9	68.6	61.3
		Mandal	27.08.06	19.55	23.35	53.9	68.6	61.3
		28.08.06	19.15	23.13	60.2	77.6	68.9	
		29.08.06	19.55	23.35	53.9	68.6	61.3	
		30.08.06	19.55	23.35	58.8	76.5	67.2	
		31.08.06	19.53	23.45	53.9	77.4	65.8	
		01.09.06	19.55	23.45	54.4	72.4	63.9	
		02.09.06	19.55	23.4	54.5	74.5	64.8	
		03.09.06	20.05	23.45	56.7	77.3	66.5	
		04.09.06	19.55	23.35	57.2	77.5	66.9	
		05.09.06	19.35	23.35	54.7	74.2	65.4	
		06.09.06	19.25	23.45	59.1	80.2	69.8	

Sr. No.	Location	Date	Time (hrs)		Noise Level (dB A)			
			From	To	Min	Max	Avg	
4	Bhosari- Nashik Phata Ganesh Mandal	26.08.06	20.15	23.2	65.4	83.4	73	
		27.08.06	20.15	23.2	65.4	83.4	73	
		28.08.06	19.38	22.32	65.3	79.3	71.9	
		29.08.06	20.15	23.2	65.4	83.4	73	
		30.08.06	20.15	23.2	64.2	81.2	72.6	
		31.08.06	20.15	23.25	65.8	80.8	73.2	
		01.09.06	20.15	23.25	66.7	81.2	74.3	
		02.09.06	20.1	23.2	67.1	81.8	74.5	
		03.09.06	20.25	23.25	66.2	82.8	74.5	
		04.09.06	20.15	23.2	65.4	81.9	74.1	
		05.09.06	19.55	23.2	69.2	82.6	75.8	
		06.09.06	19.45	23.25	72.5	83.6	77.8	
	5	Chinchwad Chaphekar Chowk	26.08.06	20.4	22.55	62.6	81.2	69.9
			27.08.06	20.4	22.55	62.6	81.2	69.9
		28.08.06	19.58	22.11	60.1	82.6	69.9	
		29.08.06	20.4	22.55	62.6	81.2	69.9	
		30.08.06	20.4	22.55	52.1	79.6	66.9	
		31.08.06	20.4	23.05	62.9	78.4	70.4	
		01.09.06	20.4	23	65.9	79.5	71.5	
		02.09.06	20.35	22.55	64.8	82.1	72.2	
		03.09.06	20.55	23.1	63.8	81.7	73.1	
		04.09.06	20.4	22.55	66.3	80.6	73.8	
		05.09.06	20.2	23	68.3	81.5	75.1	
		06.09.06	20.25	23	74.2	84.7	79.6	
6		Akurdi Chowk Ganesh Mandal	26.08.06	21.05	22.35	63.1	82.1	71.5
			27.08.06	21.05	22.35	63.1	82.1	71.5
		28.08.06	20.2	21.45	60.7	74.5	66.5	
		29.08.06	21.05	22.35	63.1	82.1	71.8	
		30.08.06	21.05	22.32	53.6	76.8	65.7	
		31.08.06	21.05	22.4	61.6	79.7	69.6	
		01.09.06	21.05	22.4	59.2	79.8	69.6	
		02.09.06	21.05	22.35	60.3	80.5	69.6	
		03.09.06	21.15	22.4	59.1	80.2	69.5	
		04.09.06	21.05	22.35	57.7	82.1	69.6	
		05.09.06	20.55	22.35	59.1	79.7	69.1	
		06.09.06	20.55	22.4	62.5	80.4	71.2	

Sr. No.	Location	Date	Time (hrs)		Noise Level (dB A)		
			From	To	Min	Max	Avg
7	Nigdi- Shivpremi Ganesh Mandal	26.08.06	21.35	22.18	55.1	78.3	65.5
		27.08.06	21.35	22.18	55.1	78.3	65.5
		28.08.06	20.35	21.16	59	78.6	66.9
		29.08.06	21.35	22.18	55.1	78.3	65.5
		30.08.06	21.35	22.08	54.7	73.4	62.6
		31.08.06	21.3	22.17	57.3	74.5	66.2
		01.09.06	21.3	22.15	56.3	76.8	67.1
		02.09.06	21.35	22.15	58.4	79.4	67.4
		03.09.06	21.4	22.2	57.4	75.1	65.7
		04.09.06	21.45	22.15	59.2	74.8	67.7
		05.09.06	21.35	22.2	58.4	73.9	65.6
		06.09.06	21.4	22.2	65.6	74.5	70.3

5.4 Nashik : In Nashik city 19 locations were monitored for noise pollution during August 28, 2006 - September 7, 2006 from 18.00 to 22.25 hrs. The noise levels at various locations are shown in **Table 4**. It is observed that minimum noise level was ranging from 63.8 dBA to 89.5 dBA and maximum levels was ranging from 80 to 96 dBA. Background noise data also collected on September 7, 2006, which shows minimum noise level 47.3 dBA and maximum ranging from 54.3 to 75 dBA. Average noise levels during festival were above permissible limits.

Table 4 : Noise Levels at Nashik

Sr. No.	Location	Date	Time (hrs)		Noise Level (dB A)		
			From	To	Min	Max	Avg
1	Shalimar Chowk, Nashik	28.08.06	20.30	22.35	72.7	84.3	78.5
		30.08.06	20.10	0.40	83.7	92.3	88
		02.09.06	21.45	22.35	82.5	99.3	90.9
		03.09.06	21.24	22.09	71.6	81.3	77.2
		04.09.06	21.00	22.10	72	81.7	77.1
		05.09.06	21.00	23.33	71.8	87.1	79.1
		07.09.06	20.40	23.32	47.3	54.3	50.9

Sr. No.	Location	Date	Time (hrs)		Noise Level (dB A)		
			From	To	Min	Max	Avg
2	Bhadrakali Chowk, Nashik	28.08.06	20.55	23.00	78.2	90	84.1
		30.08.06	20.30	0.20	78.3	96.3	87.3
		31.08.06	20.55	23.25	83.4	93.3	88.4
3	C.B.S.Chowk, Nashik	28.08.06	21.20	23.25	68.1	87.3	77.7
4	Ashokstambha, Nashik	28.08.06	21.40	23.50	81.1	92.5	86.8
		29.08.06	20.25	22.30	75.4	88.6	82
		31.08.06	20.35	23.45	72.5	91.3	81.9
		02.09.06	20.50	23.45	78.9	96.4	87.7
		03.09.06	19.40	23.10	70.9	92.3	80.7
		04.09.06	19.50	23.40	75.1	94.6	82.6
		05.09.06	20.00	22.45	74.9	95.3	82.7
		06.09.06	18.40	19.25	78.2	87.2	83.9
5	Ravivar Karanja, Nashik	29.08.06	20.45	22.50	74.7	89.4	82.1
		02.09.06	21.15	23.20	74.5	90.7	82.6
		03.09.06	20.00	22.55	77.6	84.6	79.8
		04.09.06	20.15	23.30	77.5	81.1	79.5
		05.09.06	20.10	22.55	77.2	80.1	78.8
		06.09.06	22.30	23.25	77.9	93.7	88.7
		07.09.06	21.10	22.30	72.8	74.1	73.4
6	Malegaon stand, Nashik	29.08.06	21.05	23.15	66.2	84.6	75.4
7	Panchavati Karanja, Nashik	29.08.06	21.25	23.30	76.1	80.1	78.1
		02.09.06	21.30	22.00	72.9	85.4	79.2
8	Dwarka, Nashik	29.08.06	21.50	23.00	70.3	86.2	78.3
		31.08.06	21.30	20.55	78.1	88.7	83.4
		01.09.06	21.55	22.55			97.5
9	Pawan Nagar, Nashik	30.08.06	21.25	23.30	72.8	86.8	79.8
10	Nashik Road, Nashik	30.08.06	21.55	22.50	76.5	84.8	80.7

Sr. No.	Location	Date	Time (hrs)		Noise Level (dB A)		
			From	To	Min	Max	Avg
11	Near Mumbai Naka, United Friend-	31.08.06	21.55	22.35	74.4	88.7	81.6
	Circle, Nashik	03.09.06	19.10	23.25	70.3	98.1	83.6
		04.09.06	19.25	23.50	70.2	95.8	81.5
		05.09.06	21.25	22.35	74.1	95.2	83.6
		07.09.06	20.30	23.16	63.8	72.1	68.1
12	Savata Nagar, Nashik	01.09.06	21.05	23.55			89.2
13	Rane Nagar, Nashik	01.09.06	21.25	23.30			93.7
14	Gangapur Road, Nashik	02.09.06	20.30	24.00	77.3	88.7	83
15	Market Yard Ganeshotsav Mandal,	03.09.06	20.30	22.45	73	89.1	79.9
	Nashik	04.09.06	19.40	22.55	73.3	90.2	80.8
		05.09.06	20.10	23.05	72.5	90.7	81.1
		07.09.06	21.20	22.20	72.7	75.4	73.9
16	Gadge Maharaj Statue Shiv sena-						
	Uvak Mitra Mandal, Nashik	03.09.06	21.10	22.20	76.3	93.4	82.7
		04.09.06	21.15	22.40	74.6	90	82.2
		05.09.06	20.35	23.15	73.8	92.9	83
		07.09.06	20.50	22.52	66.2	70.4	68.7
17	Meher Signal, Nashik	06.09.06	19.15	20.30	86.4	93.7	89.7
18	Dhumal Point, Nashik	06.09.06	20.45	21.50	89.5	93.5	91.4
19	Main Road, Nashik	06.09.06	21.50	22.35	77.9	92	87.2

5.5 Ahmednagar : In Ahmednagar city 21 locations near Ganapati Mandals were monitored for noise pollution during August 30, 2006 - September 6, 2006 from 19.00 to 22.00 hrs. The noise levels at various locations are shown in **Table 5**. It is observed that noise levels were ranging from 72 to 86.5 dBA. All the readings are above permissible limits.

Table 5 : Noise Levels at Ahmednagar

Sr. No.	Location	Date	Time (hrs)		Noise Level, dBA Avg
			From	To	
1	Sangam Tarun Ganesh Mandal, Maliwada, Ahmednagar.	30.08.06	19.00	19.05	78.4
		01.09.06	19.10	19.15	78.6
		02.09.06	19.15	19.20	78
		03.09.06	19.05	19.10	78.2
		06.09.06	19.00	19.05	78.4
2	Navyug Ganesh Mandal, Maliwada, Ahmednagar	30.08.06	19.15	19.20	72.2
		01.09.06	19.20	19.25	72
		02.09.06	19.25	19.30	72.3
		03.09.06	19.15	19.20	72.1
		06.09.06	19.15	19.20	72.2
3	Amar Ganesh Mandal, Dhor Galli, AhmedNagar	30.08.06	20.10	20.15	73.5
		01.09.06	19.45	19.50	73.8
		02.09.06	19.50	19.55	73.4
		03.09.06	19.25	19.30	73
		06.09.06	20.10	20.15	73.5
4	Mahalaxmi Ganesh Mandal, Maliwada, AhmedNagar	30.08.06	20.50	20.55	74.4
		01.09.06	20.00	20.05	74.8
		02.09.06	20.05	20.10	74
		03.09.06	19.40	19.45	74.5
		06.09.06	20.50	20.55	74.4
5	Samburaje Mitra Mandal, Maliwada, AhmedNagar	30.08.06	21.15	21.20	76.6
		01.09.06	20.15	20.20	76
		02.09.06	20.20	20.25	76.6
		03.09.06	19.50	19.55	76.6
		06.09.06	21.15	21.20	76.6
6	Tatya Tope Ganesh Mandal, Kotwali Police Station	30.08.06	21.25	21.30	75.7
		01.09.06	20.30	20.35	75.9
		02.09.06	20.35	20.40	75
		03.09.06	20.00	20.05	75.4
		06.09.06	21.25	21.30	75.7

Sr. No.	Location	Date	Time (hrs)		Noise Level, dBA
			From	To	Avg
7	Shiv Garjana Ganesh Mandal,	30.08.06	21.35	21.40	78
	Dake Galli, Ahmednagar	01.09.06	20.40	20.45	78.3
		02.09.06	20.45	20.50	78.4
		03.09.06	20.25	20.30	78
		06.09.06	21.35	21.40	78
8	Nav Jawan Kala Mitra Mandal,	30.08.06	21.50	21.55	79.2
	Kapad Bazar, Ahmednagar	01.09.06	21.00	21.05	79
		02.09.06	21.05	21.10	79.2
		03.09.06	20.35	20.40	79.1
		06.09.06	21.50	21.55	79.2
9	Jay Mata Ganesh Mandal,	30.08.06	22.15	22.20	80.6
	Kapad Bazar, Ahmednagar	01.09.06	21.05	21.10	80.4
		02.09.06	21.10	21.15	80
		03.09.06	20.45	20.50	80.3
		06.09.06	22.15	22.20	80.6
10	Panchmukhi Mahadev Tarun Mandal, Sarjapura, Ahmednagar	30.08.06	22.30	22.35	81.8
		01.09.06	21.20	21.25	81.6
		02.09.06	21.25	21.30	81.3
		03.09.06	21.00	21.05	81.5
		06.09.06	22.30	22.35	81.8
11	Siddheswar Ganesh Mandal, Jamubhai Talim, Ahmednagar	30.08.06	22.35	22.40	82.5
		01.09.06	21.35	21.40	82
		02.09.06	21.30	21.35	82
		03.09.06	21.15	21.20	82.2
		06.09.06	22.35	22.40	82.5
12	Dilli Gate Tarun Mandal, Dilli gate, AhmedNagar	30.08.06	22.50	22.55	75
		01.09.06	21.50	21.55	75.1
		02.09.06	21.45	21.50	75.6
		03.09.06	21.25	21.30	75.4
		06.09.06	22.50	22.55	75

Sr. No.	Location	Date	Time (hrs)		Noise Level, dBA
			From	To	Avg
13	Patwardhan Chowk Mitra Mandal	30.08.06	23.00	23.05	72
		01.09.06	22.00	22.05	72.3
		02.09.06	22.00	22.05	72.1
		03.09.06	21.40	21.45	72
		06.09.06	23.00	23.05	72
14	Shivaji Tarun Mandal, Zarekar Galli,	30.08.06	23.10	23.15	70
	AhmedNagar	01.09.06	22.10	22.15	70.6
		02.09.06	22.05	22.10	70.7
		03.09.06	22.00	22.05	70.3
		06.09.06	23.10	23.15	70
15	Mahalaxmi Tarun Mandal, Maliwada,	30.08.06	23.20	23.25	71
	AhmedNagar	01.09.06	22.20	22.25	71.5
		02.09.06	22.20	22.25	71
		03.09.06	22.15	22.20	71.5
		06.09.06	23.20	23.25	71
16	Azad Tarun Mandal, Sardar Bazar,	05.09.06	23.30	23.35	82.4
	Bhingar				
17	Vinayak Tarun Mandal, Bhingar	05.09.06	0.00	0.05	85
18	Bhairavnath Tarun Mandal, Bhingar	05.09.06	0.30	0.35	80
19	Trimurthi Tarun Mandal, Bhingar	05.09.06	1.1	1.15	85.8
20	Samrat Tarun Mandal, Bhingar	05.09.06	1.45	1.5	86.5
21	Ganesh Tarun Mandal, Bhingar	05.09.06	2.15	2.2	84

5.6 Satara : In Satara city 33 locations were monitored for noise pollution during September 2, 2006 - September 5, 2006 during 18.00 to 22.25 hrs. The noise levels at various locations are shown in **Table 6**. It is observed that minimum noise level was ranging from 64.4 dBA to 87.9 dBA and maximum levels was ranging from 90 to 110 dBA. Average noise levels during festival were above permissible limits.

Table 6 : Noise Levels at Satara

Sr. No.	Location	Date	Time (hrs)		Noise Level (dB A)		
			From	To	Min	Max	Avg
1	Sarvajanic Bandhkam Vibhag, Powai naka	02.09.06	19.1	19.15	80.6	97.5	89.4
2	Shivaji circle Ganesh Mandal, Powai naka	02.09.06	19.2	19.25	65.3	106	96.8
		03.09.06	19.3	19.35	64.2	104	96.6
3	Primary teacher co.op. bank, Powai naka	02.09.06	19.4	19.45	61.5	100	86.8
4	Shri Chatrapathy Sahu market Ganesh- Mandal, Powai naka	02.09.06	19.5	19.55	70.3	90.2	89.9
5	Veer Hanuman Ganesh Mandal, Malhapeth	02.09.06	20	20.05	67.7	92	78.2
6	Navyug Ganesh Mandal Pantacha Gote	02.09.06	20.1	20.15	63.3	91.4	77.6
7	Shivshakthi Sanskruthik Mandal, Ravivar Peth, Satara	02.09.06	20.2	20.25	60.2	92.6	78.4
8	New Bal Gopal Ganesh Mandal, Pantaccha Gote	02.09.06	20.3	20.35	87.9	92.6	90.4
		04.09.06	21.15	21.2	87.8	93.4	91.2
9	Ranshur Mandal, 106, Malhar Peth, Satara	02.09.06	20.4	20.45	63.3	98.5	87.2

Sr. No.	Location	Date	Time (hrs)		Noise Level (dB A)		
			From	To	Min	Max	Avg
10	Tarun Yuvak Mandal, Malhar Peth, Satara	02.09.06	20.5	20.55	61.9	96.2	85.4
11	Veershaiv kakkaiyya Samaj Mandal, Malhar Peth,	02.09.06	21	21.05	62.8	98.6	87.8
12	Prakash Mandal, Sheete Chowk, Satara	02.09.06	21.1	21.15	63.5	97.6	82.6
13	Shahu Chowk Ganesh Mandal, Satara	03.09.06	21.15	21.2	62.3	96.2	86.8
14	Bal Hanuman Ganesh Mandal, Kesarkar Peth, Satara	03.09.06	21.25	21.3	63.4	98.2	85.4
15	Shri Shiv Ganesh Mandal, Guruvar Peth	03.09.06	21.35	21.4	64.8	100	88.4
16	Bal Sphurti Ganesh Mandal, Satara	03.09.06	21.45	21.5	54.8	104	96.5
17	Phutaka Talav Ganesh Mandal, Shanivar Peth	03.09.06	21.55	22.05	66.4	105	97.2
18	Bal Vikas Ganesh Mandal, Shanivar Peth	03.09.06	21.25	21.35	65.2	104	98.5
19	Marvadi Bhuvan Ganesh Mandal, Satara	03.09.06	21.4	21.45	63.8	106	98.5
20	Moti Chowk Ganesh Mandal, Satara	03.09.06	22.15	22.2	62.7	97.7	86.7
21	Bal Hanuman Ganesh Mandal, Police quarters, Satara	04.09.06	21.15	21.2	61.7	93.7	78.2
22	Samarth Ganesh Mandal, Mangalwar Peth	04.09.06	21.25	21.3	63.8	98.2	89.8
23	Ashtavinayak Ganesh Mandal,	04.09.06	21.35	21.4	62.7	100	95.2

Sr. No.	Location	Date	Time (hrs)		Noise Level (dB A)		
			From	To	Min	Max	Avg
24	Samrat Mahaganapathi, Sadashiv Peth	04.09.06	21.5	21.55	63.7	96.2	89.8
25	Bal Hanuman Mandal, Godoli Chowk	04.09.06	22	22.05	60.4	94.2	87.8
26	Panchmukhi Ganesh Mandal	04.09.06	22.15	22.2	64.5	92.7	85.2
27	Rajkamal Mandal, Shanivar Peth	04.09.06	22.25	22.3	64.7	98.2	88.7
28	Jai Hind Ganesh Mandal, Shaniwar chowk	04.09.06	22.35	22.4	62.7	93.6	82.3
		05.09.06	21.15	21.2	73.5	89.7	73.1
29	Shivaji Road Ganesh Mandal	05.09.06	21.25	21.3	70.5	93.2	76.4
30	Alhad Mandal, Yashwant Peth, Karad	05.09.06	21.35	21.4	58	75.2	70.4
31	Kala Manch Mandal, guruwar peth, Karad	05.09.06	21.5	21.55	60.9	78.4	62.1
32	Navbharat Ganesh Mandal, Datta Chowk, Karad	05.09.06	22	22.05	62.1	94.5	83
33	Navjawan Ganesh Mandal, Azad chowk, Karad	05.09.06	22.15	22.2	85.4	110	97

5.7 Kalyan – Dombivali : In Kalyan – Dombivali region, 3 locations were monitored for noise pollution during September 3, 2006 - September 6, 2006 during 19.00 to 22.25 hrs. The noise levels at various locations are shown in **Table 7**. It is observed that minimum noise level was ranging from 69.4 dBA to 75.6dBA and maximum levels was ranging from 83.2 to 92 dBA. Average noise levels during festival were above permissible limits.

Table 7 : Noise Levels at Kalyan - Dombivali

Sr. No.	Location	Date	Time (hrs)		Noise Level (dB A)		
			From	To	Min	Max	Avg
1	Ganesh Ghat	03.09.06	19.05	22.25	69.8	85.6	74
		04.09.06	19.05	22.25	69.4	83.2	77.6
		05.09.06	19.05	22.25	70.4	85.9	78.2
		06.09.06	19.05	22.25	70	87.5	78.8
2	Reti Bunder	03.09.06	19.05	22.25	71.2	85.7	79.5
		04.09.06	19.05	22.25	75.6	91.7	83
		05.09.06	19.05	22.25	75.5	92	84.2
		06.09.06	19.05	22.25	74.4	87.4	80.2
3	Tisai Talav	03.09.06	19.05	22.25	70.5	86.4	78.8
		04.09.06	19.05	22.25	74.6	89.4	81.8
		05.09.06	19.05	22.25	75	91	83.2
		06.09.06	19.05	22.25	71.2	88.2	80.1

5.8 Navi Mumbai : In Navi Mumbai region, 5 locations were monitored for noise pollution during September 3, 2006 - September 6, 2006 from 19.00 to 22.25 hrs. The noise levels at various locations are shown in **Table 8**. It is observed that minimum noise level was ranging from 57.7 to 77.4 dBA and maximum levels was ranging from 85.6 to 96.1 dBA. Average noise levels during festival were above permissible limits.

Table 8 : Noise Levels at Navi Mumbai

Sr. No.	Location	Date	Time (hrs)		Noise Level (dB A)		
			From	To	Min	Max	Avg
1	CBD	03.09.06	19.05	22.25	76.1	87.8	81.3
		04.09.06	19.05	22.25	76.4	93.8	85.1
		05.09.06	19.05	22.25	74.3	87.7	80.6
		06.09.06	19.05	22.25	77.3	96.1	86.6
2	Nerul	03.09.06	19.05	22.25	73.2	86.5	78.9
		04.09.06	19.05	22.25	76.5	89.6	83.2
		05.09.06	19.05	22.25	57.7	88.6	78.6
		06.09.06	19.05	22.25	75.1	90.1	82.9

Sr. No.	Location	Date	Time (hrs)		Noise Level (dB A)		
			From	To	Min	Max	Avg
3	Vashi	03.09.06	19.05	22.25	75.8	87.4	81.8
		04.09.06	19.05	22.25	76.7	89.4	83.5
		05.09.06	19.05	22.25	75.1	89.5	82
		06.09.06	19.05	22.25	77.4	91.6	84.2
4	Kopar Khairane	03.09.06	19.05	22.25	75.9	89.7	82.3
		04.09.06	19.05	22.25	75.8	87.8	78.4
		05.09.06	19.05	22.25	74.2	92.2	82.7
		06.09.06	19.05	22.25	75.1	89.4	82.9
5	Ghansoli	03.09.06	19.05	22.25	74.2	87.9	80.9
		04.09.06	19.05	22.25	75.2	86.9	80.9
		05.09.06	19.05	22.25	74.1	85.6	79.6
		06.09.06	19.05	22.25	75	87.3	81

5.9 Amaravati : In Amaravati, 3 locations were monitored for noise pollution on September 5, 2006 and September 6, 2006 from 19.00 to 20.3 hrs. The noise levels at various locations are shown in **Table 9**. It is observed that minimum noise level was ranging from 43.8 to 63.2 dBA and maximum level was ranging from 65.6 to 88.3 dBA. Average noise levels during festival were above permissible limits.

Table 9 : Noise Levels at Amaravati

Sr. No.	Location	Date	Time (hrs)		Noise Level (dB A)		
			From	To	Min	Max	Avg
1	Azad Hind Ganesh Mandal Budhwara	05.09.06	19	24	58.7	75.2	66.8
		06.09.06	19.3	22.15	63.2	81.6	70.9
2	Shri Krushna Nagar Ganesh Mandal,	05.09.06	19	24	58.2	65.6	63
		06.09.06	20.3	23.15	56.9	88.3	69.4
3	Sindhuvarn Ganesh Mandal, Rajapeth Chowk	05.09.06	19	24	56.3	70	63.1
		06.09.06	20	24	43.8	80	67.5

5.10 Aurangabad : In Aurangabad, 7 locations were monitored for noise pollution on September 3, 2006 to September 7, 2006 from 19.00 to 22.31 hrs. The noise levels at various locations are shown in **Table 10**. It is observed that minimum noise level was ranging from 52 to 82.9 dBA and maximum level was ranging from 73.2 to 115 dBA. Average noise levels during festival were above permissible limits.

Table 10 : Noise Levels at Aurangabad

Sr. No.	Location	Date	Time (hrs)		Noise Level (dB A)		
			From	To	Min	Max	Avg
1	City Chowk Police Station	03.09.06	19.45	20.15	76.1	106	87.1
		04.09.06	19.3	19.59	74.2	115	88.5
		05.09.06	21.3	22	74.2	115	88.2
		06.09.06	18.45	19.03	82.9	110	96.8
		07.09.06	19.32	19.46	68.2	73.2	71.1
2	Gulmandi	03.09.06	19.5	20.2	80.3	106	91.5
		04.09.06	19	22.15	74.1	104	85.8
		05.09.06	22.31	23	75.3	119	90.9
		06.09.06	19.12	19.24	85	119	104.2
		07.09.06	19.1	19.24	63.1	73.4	69.4
3	Mahatma Phule Chowk, Aurangapura	03.09.06	19.3	20	75.6	92.4	81.7
		04.09.06	19.3	22.25	70.3	103	86.9
		05.09.06	22.45	22.45	71.5	100	84.1
		06.09.06	20.55	21.16	64.1	79.9	68.9
		07.09.06	18.31	18.45	68.9	75.8	72
4	Nirala Bazar	03.09.06	20.45	21.2	67.8	87.2	79.4
		04.09.06	20.1	20.4	76.1	99.6	85.5
		05.09.06	21.3	23.4	52	97.7	77.4
		06.09.06	20.23	20.35	70.2	81.4	77
		07.09.06	18.06	18.2	69.9	76	73.1
7	Gandhi Chowk, Shahaganj	03.09.06	20.3	21.15	79.1	98.1	87.9
		04.09.06	19.3	23.3	74.2	105	85.7
		05.09.06	21.37	22.2	76	103	84.7
		06.09.06	18.2	18.35	80.1	116	99.1
		07.09.06	20.11	20.25	65.6	74.9	70.2

5.11 Kolhapur : In Kolhapur region. 9 locations in Kolhapur city, 3 locations in Ratnagiri city and 3 stations at Chiplun were monitored for noise pollution on August 26, 2006 to September 7, 2006 from 19.00 to 22.00 hrs. The noise levels at various locations are shown in **Table 11**. It is observed that minimum noise level was ranging from 50 to 94 dBA and maximum level was ranging from 54 to 110 dBA. Average noise levels during festival were above permissible limits.

Table 11 : Noise Levels at Kolhapur

Sr. No.	Location	Date	Time (hrs)		Noise Level (dB A)				
			From	To	Min	Max	Avg		
1	Kasba Bawada	26.08.06	21	21.25	62	65	63.5		
		28.08.06	21.05	21.2	60	66	63		
		29.08.06	21.15	21.35	50	54	52		
		31.08.06	21.2	21.4	62	65	63.5		
		01.09.06	20.15	20.45	61	67	64		
		02.09.06	19.45	21.05	62	70	66		
		03.09.06	20.15	20.45	60	78	69		
		04.09.06	21.3	21.5	60	65	62.5		
		05.09.06	21.3	22.15	72	85	78.5		
		06.09.06	21.3	22.05	76	90	83		
		07.09.06	21.05	21.2	65	86	75.5		
		2	Rajarampuri	26.08.06	21.25	21.35	66	70	68
				28.08.06	21.2	21.25	50	54	52
29.08.06	21.35			21.45	59.5	65	62.3		
31.08.06	21.4			21.55	54	67	60.5		
01.09.06	20.45			21	64	77	70.5		
02.09.06	20.05			20.15	54	59	56.5		
03.09.06	20.45			21	65	85	75		
04.09.06	21.5			22.1	71	80	75.5		
05.09.06	22.15			22.25	79	92	85.5		
	06.09.06	22.05	22.25	75	97	86			
	07.09.06	21.2	21.25	61	79	70			

Sr. No.	Location	Date	Time (hrs)		Noise Level (dB A)		
			From	To	Min	Max	Avg
3	Uma Talkies	26.08.06	21.35	21.45	52	60	56
		28.08.06	21.25	21.35	59	64	61.5
		29.08.06	21.45	21.55	67	78	72.5
		31.08.06	21.55	22.1	59	70	64.5
		01.09.06	21	21.15	68	71	69.5
		02.09.06	20.15	20.3	57	67	62
		03.09.06	21	21.15	66	86	76
		04.09.06	22.1	22.2	68	81	74.5
		05.09.06	22.25	22.35	70	86	78
		06.09.06	22.25	22.5	78	92	85
		07.09.06	21.25	21.35	64	73	68.5
4	Mirajkar Tikti	26.08.06	21.45	21.55	58	65	61.5
		28.08.06	21.35	21.45	52	56	54
		29.08.06	21.5	22	57	62	59.5
		31.08.06	22.1	22.2	58	65	61.5
		01.09.06	21.1	21.2	67	74	70.5
		02.09.06	20.3	20.45	59	68	63.5
		03.09.06	21.1	21.2	70	84	77
		04.09.06	22.2	22.3	72	87	79.5
		05.09.06	22.35	22.45	74	88	81
		06.09.06	22.5	23.1	92	102	97
		07.09.06	21.35	21.45	66	72	69
5	Mahadwar Road	26.08.06	21.55	22.05	60	69	64.5
		28.08.06	21.45	22	62	65	63.5
		29.08.06	22	22.1	62	67	64.5
		31.08.06	22.2	22.3	57	61	59
		01.09.06	21.2	21.4	70	78	74
		02.09.06	20.45	21	62	67	64.5
		03.09.06	21.2	21.4	68	88	78
		04.09.06	22.3	22.5	65	73	69
		05.09.06	22.45	23	72	83	77.5
		06.09.06	23.1	23.25	98	110	104
		07.09.06	21.45	22	69	74	71.5

Sr. No.	Location	Date	Time (hrs)		Noise Level (dB A)		
			From	To	Min	Max	Avg
6	Papachi Tikti	26.08.06	22.05	22.15	55	62	58.5
		28.08.06	22	22.1	59	64	61.5
		29.08.06	22.1	22.2	59	66	62.5
		31.08.06	22.3	22.4	51	58	54.5
		01.09.06	21.4	21.5	69	78	73.5
		02.09.06	21	21.1	59	64	61.5
		03.09.06	21.4	21.5	67	78	72.5
		04.09.06	22.5	23.05	60	80	70
		05.09.06	23	23.1	74	84	79
		06.09.06	22.25	22.45	94	104	99
		07.09.06	22	22.1	54	67	60.5
7	Shivaji Chowk	26.08.06	22.15	22.25	65	73	69
		28.08.06	22.1	22.2	57	60	58.5
		29.08.06	22.2	22.45	74	77	75.5
		31.08.06	22.4	22.55	73	90	81.5
		01.09.06	21.5	22.05	78	88	83
		02.09.06	21.1	21.2	73	80	76.5
		03.09.06	21.5	22.05	72	81	76.5
		04.09.06	23.05	23.15	70	82	76
		05.09.06	23.1	23.2	90	95	92.5
		06.09.06	22.45	23	95	103	99
		07.09.06	22.1	22.2	53	61	57
8	Venus Corner	26.08.06	22.25	22.45	54	61	57.5
		28.08.06	22.2	22.35	51	57	54
		29.08.06	22.45	22.55	51	59	55
		31.08.06	22.55	23.15	64	70	67
		01.09.06	22.05	22.15	75	88	81.5
		02.09.06	21.2	21.35	58	73	65.5
		03.09.06	22.05	22.15	61	70	65.5
		04.09.06	22.2	22.35	78	83	80.5
		05.09.06	23.2	23.35	69	82	75.5
		06.09.06	23	23.15	77	92	84.5
		07.09.06	22.2	22.35	67	82	74.5
9	Maruti Mandir, Ratnagiri	29.08.06	19.3	19.55	80	83	81.3
		02.09.06	19.3	19.55	79	82	80.7
		07.09.06	19.3	19.55	80	82	81

Sr. No.	Location	Date	Time (hrs)		Noise Level (dB A)		
			From	To	Min	Max	Avg
10	Jai Stambha, Ratnagiri	29.08.06	19.3	19.55	84	85	84.7
		02.09.06	19.3	19.55	83	85	84
		07.09.06	19.3	19.55	86	88	87
11	S.T.Stand, Ratnagiri	29.08.06	19.3	19.55	84	86	85.3
		02.09.06	19.3	19.55	88	90	88.7
		07.09.06	19.3	19.55	87	89	88
12	Gadital, Ratnagiri	29.08.06	19.3	19.55	83	84	83.7
		02.09.06	19.3	19.55	85	86	85.7
		07.09.06	19.3	19.55	89	90	89.7
13	Chiplun Municipal Council	24.08.06	11.3	11.45	63.2	69.4	66.3
		30.08.06	16.3	16.45	68.6	72.3	70.5
		07.09.06	12.15	12.25	65.2	70.2	67.7
14	Bhaji Mandai, Chiplun	24.08.06	12.15	12.25	71.1	74.2	72.7
		30.08.06	16.45	16.55	75.2	77.2	76.2
		07.09.06	12.45	12.55	69.9	72.2	71.1
15	Bahadurshekh Naka, Chiplun	24.08.06	13.3	13.45	67.7	73.3	70.5
		30.08.06	17.15	17.25	74.5	76.7	75.6
		07.09.06	13.3	13.45	71.5	72	71.8

5.12 Raigad : In Raigad district, 16 locations were monitored for noise pollution from August 27, 2006 to September 6, 2006 from 18.00 to 22.25 hrs. The noise levels at 16 locations are shown in **Table 12**. It is observed that minimum noise level was ranging from 70.1 to 80 dBA and maximum levels was ranging from 78.5 to 88.8 dBA.

Table 12 : Noise Levels at Raigad District

Sr. No.	Location	Date	Time (hrs)		Noise Level (dB A)		
			From	To	Min	Max	Avg
1	Shilphata Khopoli	02.09.06	19.30	20.00	93	104	98.8
2	In front of Khopoli bus stop	02.09.06	20.30	21.00	90	100	95.5
3	Ballaleshwar Lake, Panvel	02.09.06	21.45	22.00	93	97	95
4	Sector- 12, Kharghar	06.09.06	20.00	21.00	90	95	92.5
5	Sector- 8, Panvel	06.09.06	20.30	21.00	97	101	99
6	Shiv Mitra Mandal New Panvel	06.09.06	21.00	22.00	95	98	96.5
7	Raja Mandal, Sector-2, Kamothe	06.09.06	21.30	22.00	91	95	93
8	Kesar Lake, Pen	28.08.06	19.30	20.00	59	82	70.5
		29.08.06	20.00	20.30	49	88	68.5
9	Pali, Sudhagad Taluka	02.09.06	20.30	21.00	55	79	67
		06.09.06	18.30	19.00	59	86	72.5
10	Ganesh Ghat, Roha	28.08.06	20.30	21.00	54	92	73
		06.09.06	20.30	21.00	48	78	63
11	Near bus stand, Alibag	02.09.06	18.30	19.00	52	93	72.5
		03.09.06	20.30	21.00	58	86	72
12	Navi Peth near Bal Mitra Mandal, Mahad	28.08.06	19.00	22.40	68.5	88.4	78.4
		30.08.06	19.00	22.30	66.8	85.4	75.7
		01.09.06	19.00	22.30	66.8	87.9	78.1
		04.09.06	19.00	22.30	65.2	84.2	74.5
		05.09.06	19.00	22.30	56.1	86.7	69.7
13	Chawdar Tahe near Ram Mandir, Mahad	28.08.06	19.40	22.40	62.4	80.5	70.5
		30.08.06	19.35	23.05	63.2	81.3	71.3
		01.09.06	19.35	23.05	63.2	82.4	71.3
		04.09.06	19.35	23.05	68	80.2	75.6
		05.09.06	19.35	23.05	54.6	79.8	64.1

Sr. No.	Location	Date	Time (hrs)		Noise Level (dB A)		
			From	To	Min	Max	Avg
14	Lions club chowk near Nutan Mitra - Mandal, Mahad.	28.08.06	20.15	23.50	55.3	83.2	68.3
		30.08.06	20.10	23.40	56.2	82.7	67.9
		01.09.06	20.10	23.40	56.2	82.8	68.1
		04.09.06	20.10	23.40	55.6	81.5	67.2
		05.09.06	20.10	23.40	54.8	81.8	65.9
15	Kumtharwada Mitra Mandal, Mahad	28.08.06	20.50	0.25	57.3	82.2	68.9
		30.08.06	20.45	23.40	57.9	81.6	68.8
		01.09.06	20.45	0.15	57.9	83	69.3
		04.09.06	20.45	0.15	56.3	82.2	68.5
		05.09.06	20.45	0.15	55.1	80.3	67.1
16	Prabhat colony near Kohinoor Mitra-Mandal, Mahad	28.08.06	21.25	21.55	77.9	83.1	79.6
		30.08.06	21.20	21.50	76.1	82.8	78.8
		01.09.06	21.20	21.50	76.5	82.6	79.1
		04.09.06	21.20	21.50	76.8	83	79.6

6.0 Conclusion

It may be seen from the results that noise levels were exceeding the permissible limit during the Ganesh festival in August – September 2006 at all 12 cities / towns covered during the survey. In spite of legal standards in place and efforts of regulatory agencies, the noise levels could not be checked and controlled up to the desired levels.

When compared with the noise levels observed during the Ganesh festivals of earlier years, we did not see significant change or reductions of noise at Pune. This indicates lack of support of people in making Ganesh festival free from noise pollution or at least less noisy in successive years owing to increasing mass awareness.

It is said that a social mission is required to make the people aware of the noise pollution and its adverse effects on environment and health. This needs to be supported by capacity building in the regulatory agencies for effective implementation of the noise standards. Role of NGOs / voluntary agencies is crucial and they can cause the process of improvement.

---o0o---